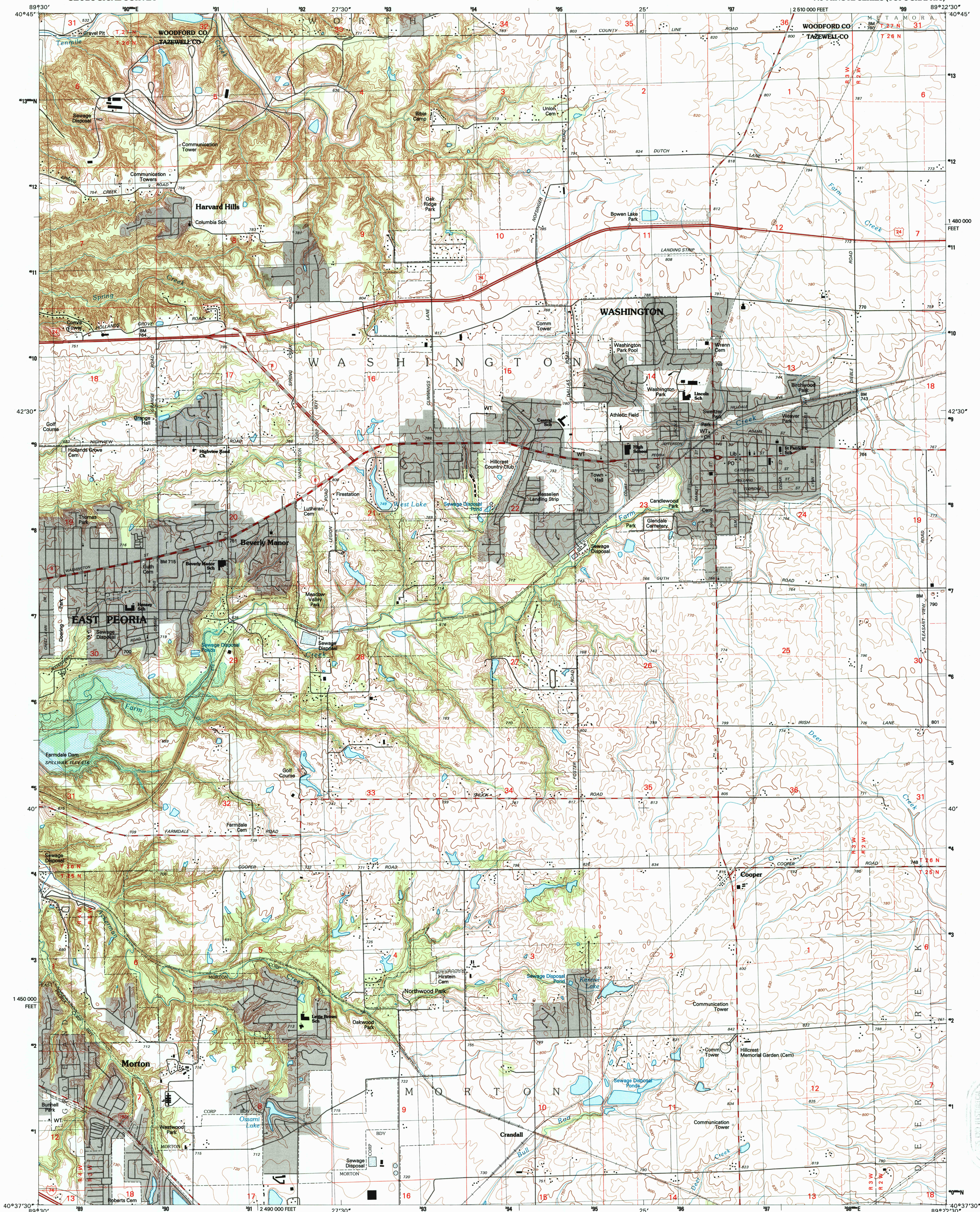


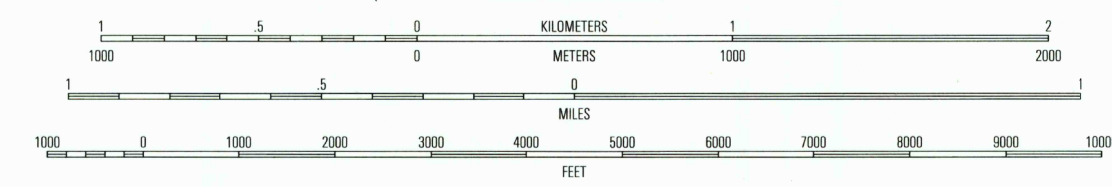
UNITED STATES  
DEPARTMENT OF THE INTERIOR  
GEOLOGICAL SURVEY

WASHINGTON QUADRANGLE  
ILLINOIS  
7.5-MINUTE SERIES (TOPOGRAPHIC)



Produced by the United States Geological Survey  
in cooperation with State of Illinois agencies  
Compiled by photogrammetric methods from imagery dated 1968  
Field checked 1970. Revised from imagery dated 1994  
PLSS and survey control current as of 1970. Map edited 1996  
Contours not revised  
North American Datum of 1983 (NAD 83). Projection and  
1:250,000 scale: Universal Transverse Mercator, zone 16  
10 000-foot ticks: Illinois Coordinate System of 1983 (level zone)  
North American Datum of 1927 (NAD 27) is shown by dashed  
corner ticks. The values of the shift between NAD 83 and NAD 27  
for 7.5-minute intersections are obtainable from National Geodetic  
Survey NADCON software  
There may be private inholdings within the boundaries of  
the National or State reservations shown on this map  
Area covered by dashed light-blue pattern  
is subject to controlled inundation

UTM GRID AND 1984 MAGNETIC NORTH  
DECLINATION AT CENTER OF SHEET



QUADRANGLE LOCATION

1	2	3
4	5	6
7	8	9

ADJOINING 7.5' QUADRANGLE NAMES

1 Spring Bay	2 Germantown Hills
3 Macomb	4 Peoria East
5 Eureka	6 Marquette Heights
7 Morton	8 Macomb

ROAD CLASSIFICATION

Primary highway  
hard surface .....  
Secondary highway  
hard surface .....  
Interstate Route  
U.S. Route  
State Route

Light-duty road, hard or  
improved surface .....  
Unimproved road .....

WASHINGTON, IL  
40089-F4-TF-024  
1995

DMA 3165 III NW-SERIES V863

THIS MAP IS A HISTORICAL  
TOPOGRAPHIC MAP  
JAN 3 1997  
REC'D FILE COPY

