

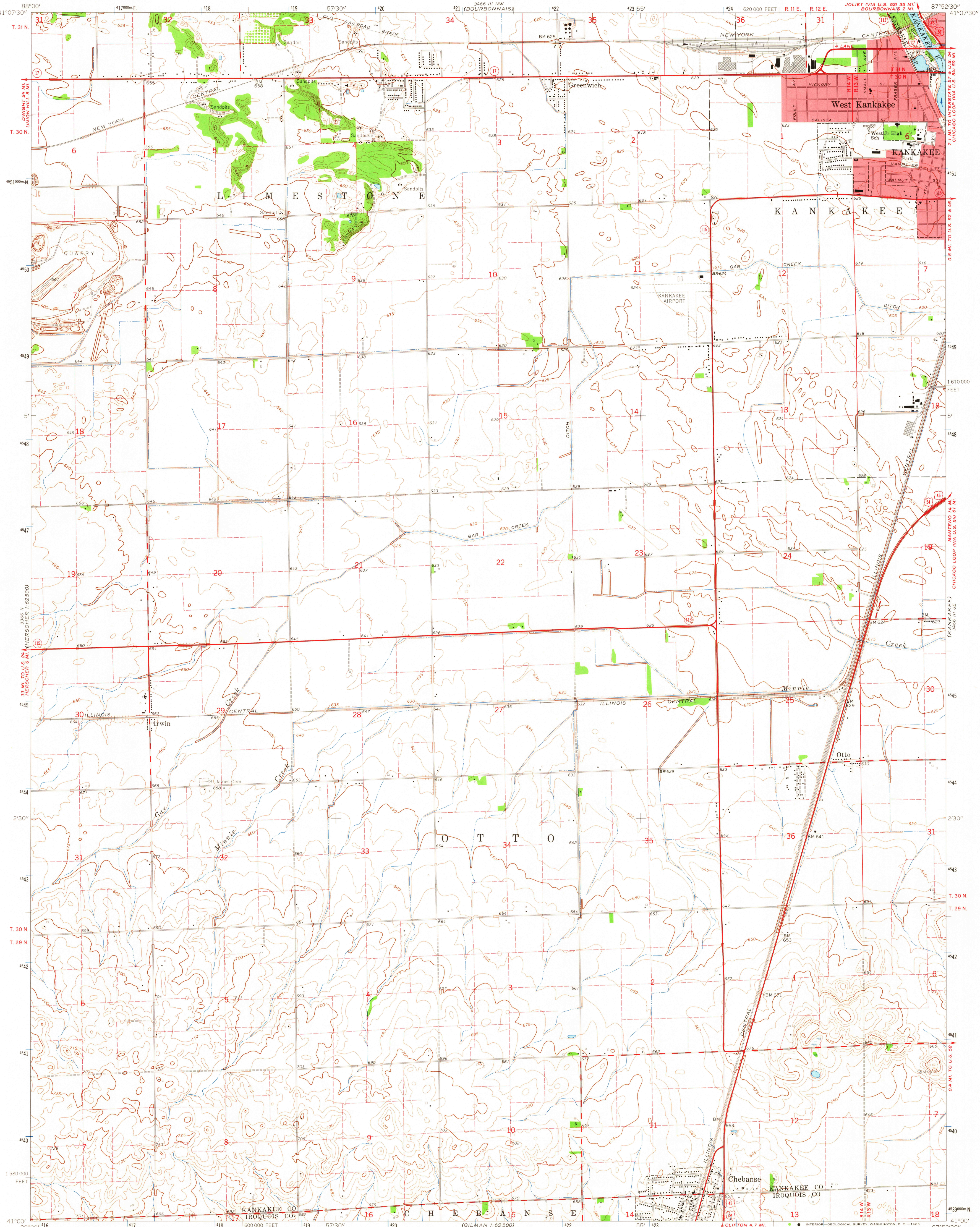
UNITED STATES
DEPARTMENT OF THE INTERIOR
GEOLOGICAL SURVEY

WEST KANKAKEE QUADRANGLE
ILLINOIS
7.5 MINUTE SERIES (TOPOGRAPHIC)

SW/4 KANKAKEE 15' QUADRANGLE

JOLIET (VIA U.S. 52) 35 MI.
BOURBONNAIS 2 MI.

3466 III NW
(BRADLEY)



Mapped, edited, and published by the Geological Survey

Control by USGS and USC&GS

Topography by photogrammetric methods from aerial

photographs taken 1961 and planetable surveys 1964

Polyconic projection, 1927 North American datum

10,000-foot grid based on Illinois coordinate system, east zone

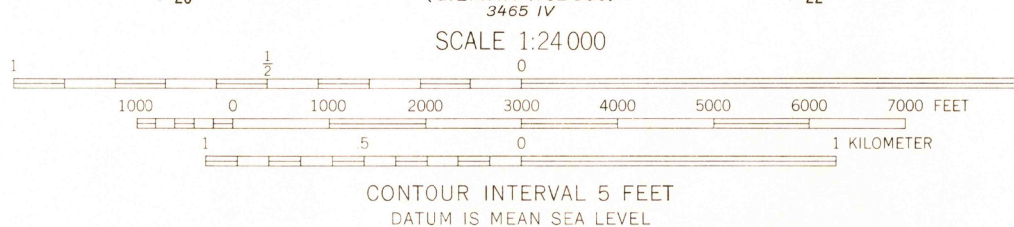
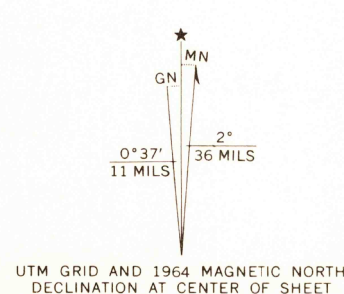
1000-meter Universal Transverse Mercator grid ticks,

zone 16 shown in blue

Red tint indicates areas in which only landmark buildings are shown

Fine red dashed lines indicate selected fence and field lines where

generally visible on aerial photographs. This information is unchecked



USGS
Historical File
Topographic Division



ROAD CLASSIFICATION
Heavy-duty ——— Light-duty ———
Medium-duty ——— Unimproved dirt ———
U.S. Route ——— State Route ———

U.S.G.S.
FILE COPY
TOPOGRAPHIC DIVISION
WEST KANKAKEE, ILL.
SW/4 KANKAKEE 15' QUADRANGLE
N4100—W8752.5/7.5
1964
AMS 3466 III SW—SERIES V863

FEB 15 1965