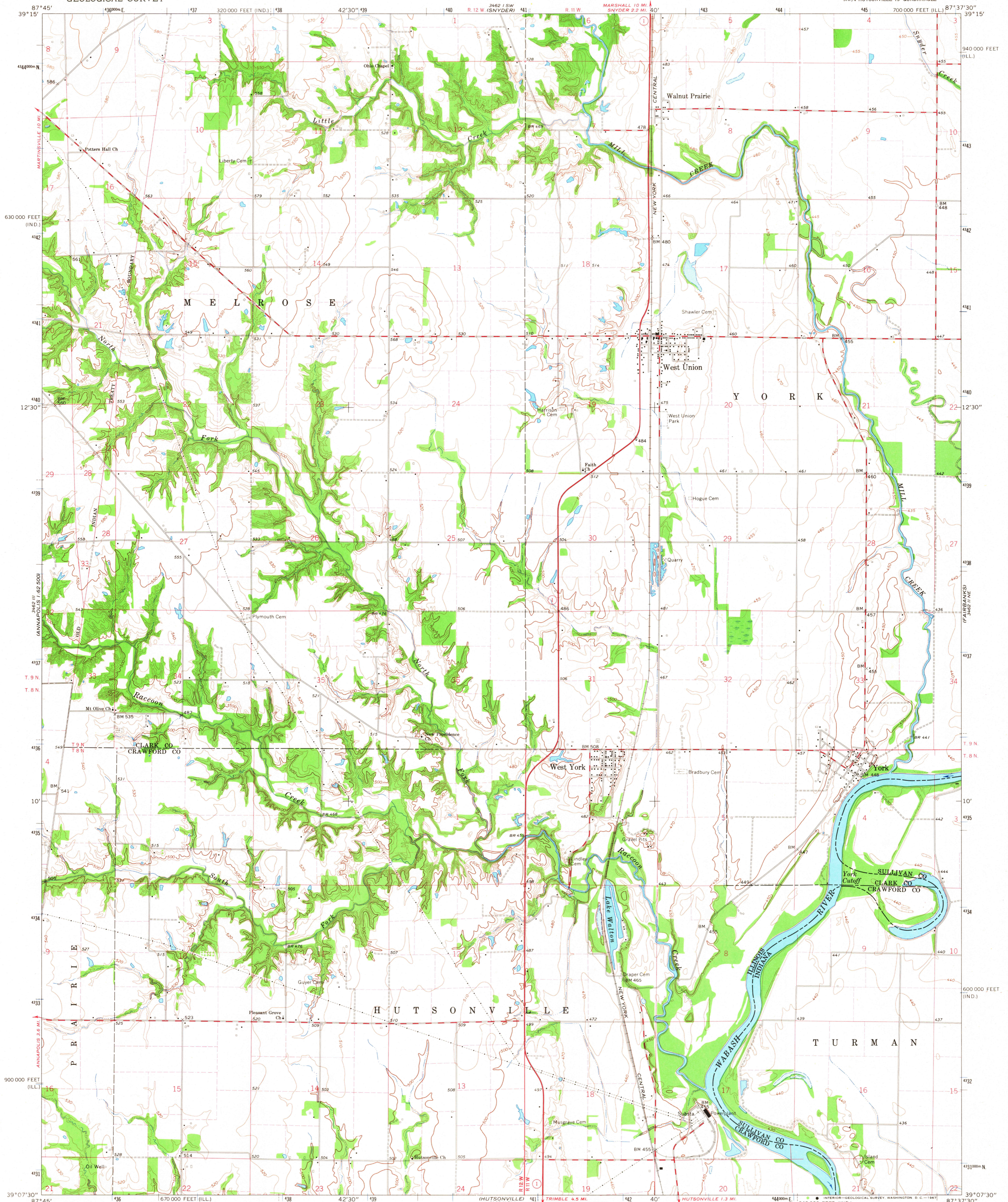
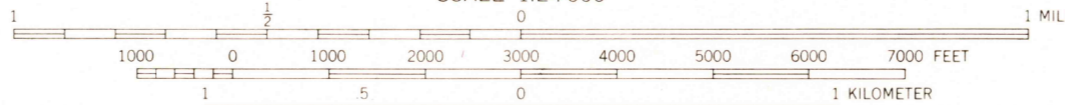
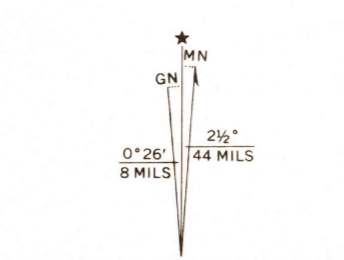


UNITED STATES  
DEPARTMENT OF THE INTERIOR  
GEOLOGICAL SURVEY

WEST UNION QUADRANGLE  
ILLINOIS-INDIANA  
7.5 MINUTE SERIES (TOPOGRAPHIC)  
NW/4 HUTSONVILLE 15' QUADRANGLE



Mapped, edited, and published by the Geological Survey  
Indiana area mapped in cooperation with Indiana  
Department of Natural Resources  
Control by USGS, USC&GS, and USCE  
Topography of Illinois area by photogrammetric methods  
from aerial photographs taken 1964 and planetable surveys 1966  
Planimetry of Indiana area by photogrammetric methods from  
aerial photographs taken 1964. Topography by planetable surveys  
1940. Revised 1966  
Polyconic projection. 1927 North American datum  
10,000-foot grids based on Illinois coordinate system, east zone  
and Indiana coordinate system, west zone  
1000-meter Universal Transverse Mercator grid ticks,  
zone 16, shown in blue  
Fine red dashed lines indicate selected fence and field lines where  
generally visible on aerial photographs. This information is unchecked



THIS MAP COMPLIES WITH NATIONAL MAP ACCURACY STANDARDS  
FOR SALE BY U. S. GEOLOGICAL SURVEY, WASHINGTON, D. C. 20242,  
STATE GEOLOGICAL SURVEY, URBANA, ILLINOIS 61801,  
AND INDIANA DEPARTMENT OF NATURAL RESOURCES, INDIANAPOLIS, INDIANA 46204  
A FOLDER DESCRIBING TOPOGRAPHIC MAPS AND SYMBOLS IS AVAILABLE ON REQUEST

USGS  
Historical File  
Topographic Division



ROAD CLASSIFICATION  
Heavy-duty ——— Light-duty ———  
Medium-duty ——— Unimproved dirt ———  
○ State Route

WEST UNION, ILL.—IND.  
NW/4 HUTSONVILLE 15' QUADRANGLE  
N3907.5—W8737.5/7.5  
1966  
AMS 3462 II NW—SERIES V963

3235  
FEB 6 1968