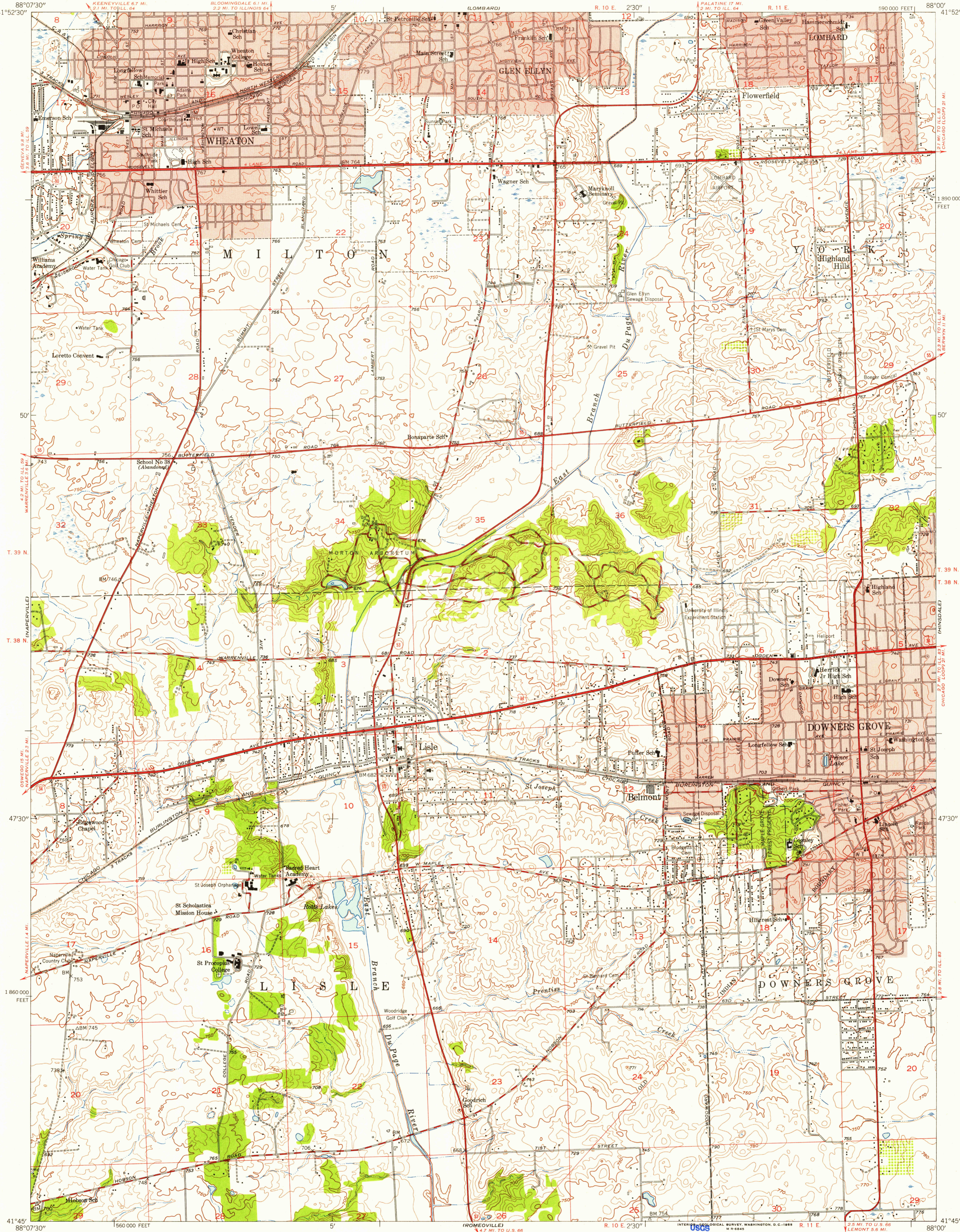


UNITED STATES
DEPARTMENT OF THE INTERIOR
GEOLOGICAL SURVEY

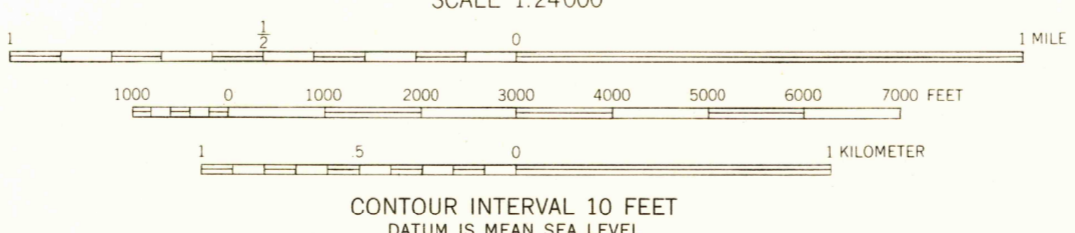
WHEATON QUADRANGLE
ILLINOIS—DU PAGE CO.
7.5 MINUTE SERIES (TOPOGRAPHIC)
SE/4 WHEATON 15' QUADRANGLE

U.S.G.S.
FILE COPY
TOPOGRAPHIC DIVISION



Mapped, edited, and published by the Geological Survey
Control by USGS and USC&GS
Topography from aerial photographs by Kelsh plotter
Aerial photographs taken 1952. Field check 1953-1954
Polyconic projection. 1927 North American datum
10,000-foot grid based on Illinois coordinate system,
east zone
Red tint indicates areas in which only
landmark buildings are shown

TRUE NORTH
MAGNETIC NORTH
APPROXIMATE MEAN
DECLINATION, 1954



USGS
Historical File
Topographic Division

ROAD CLASSIFICATION
Heavy-duty ——— 4 LANE 16 LANE Light-duty ———
Medium-duty ——— 2 LANE 16 LANE Unimproved dirt ———
U. S. Route ——— State Route ———



WHEATON, ILL.
SE/4 WHEATON 15' QUADRANGLE
N4145—W8800/7.5

1954

U.S.G.S.
FILE COPY
TOPOGRAPHIC DIVISION

MAY 25 1955