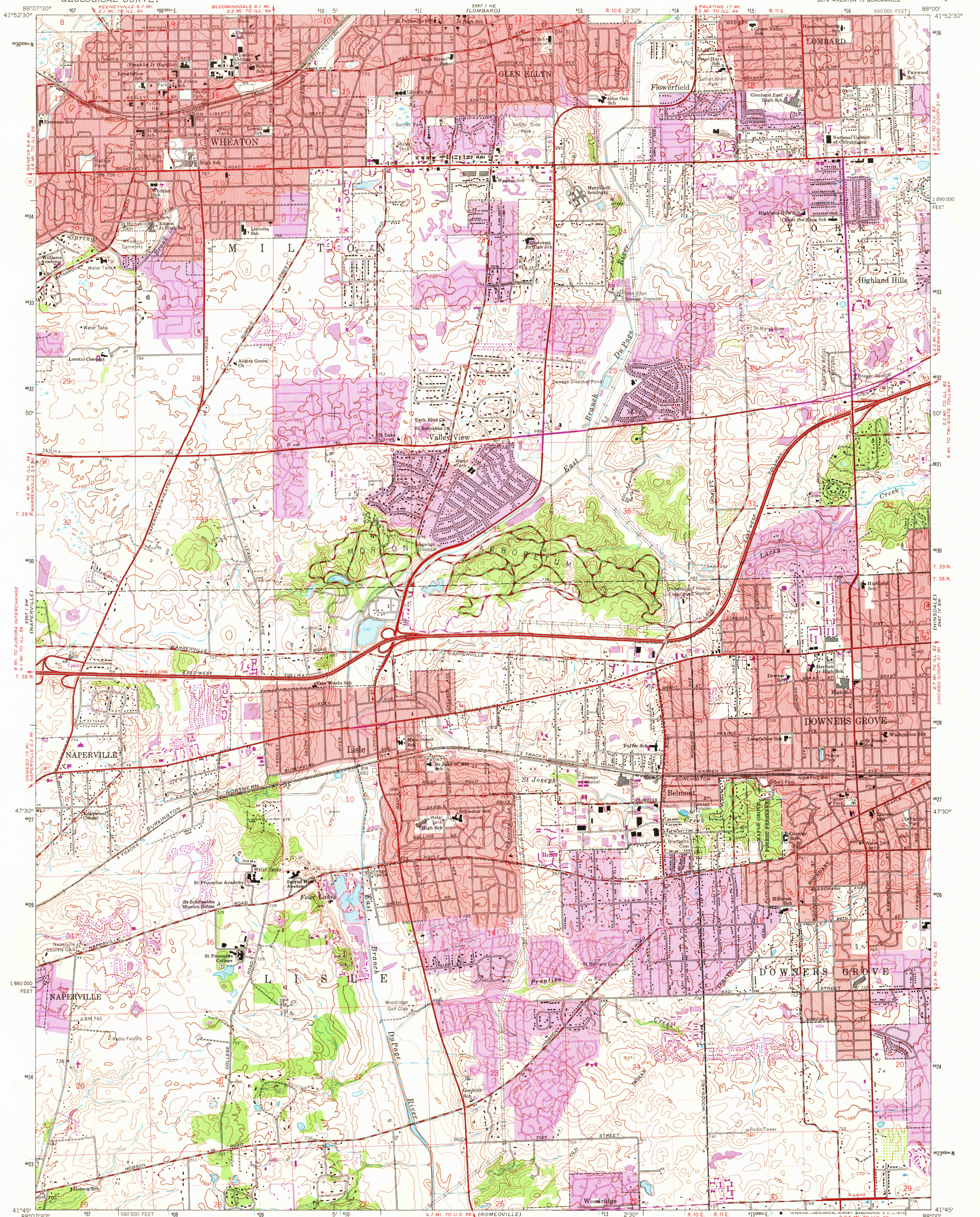


UNITED STATES
DEPARTMENT OF THE INTERIOR
GEOLOGICAL SURVEY

WHEATON QUADRANGLE
ILLINOIS—DU PAGE CO.
7.5 MINUTE SERIES (TOPOGRAPHIC)
SE 1/4 WHEATON 15 QUADRANGLE



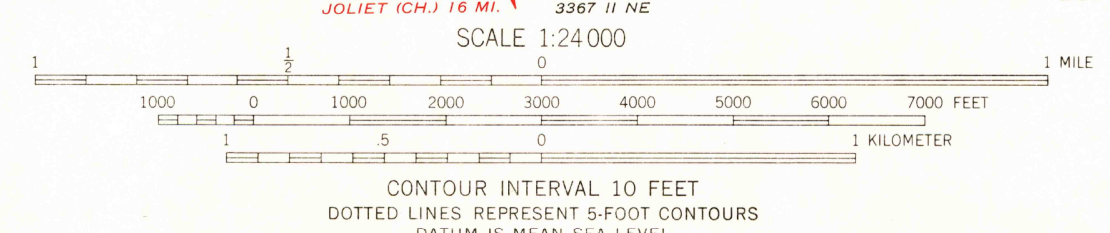
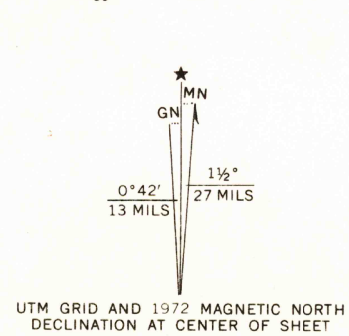
Mapped, edited, and published by the Geological Survey
Control by USGS and USC&GS

Topography by photogrammetric methods from aerial photographs
taken 1952. Field checked 1953-54. Revised from aerial
photographs taken 1962. Field checked 1962

Polyconic projection. 1927 North American datum
10,000-foot grid based on Illinois coordinate system, east zone
1000-meter Universal Transverse Mercator grid ticks,
zone 16, shown in blue

Red tint indicates areas in which only landmark buildings are shown

Fine red dashed lines indicate selected fence and field lines where
generally visible on aerial photographs. This information is unchecked



THIS MAP COMPLIES WITH NATIONAL MAP ACCURACY STANDARDS
FOR SALE BY U.S. GEOLOGICAL SURVEY, WASHINGTON, D.C. 20242
AND BY THE STATE GEOLOGICAL SURVEY, URBANA, ILLINOIS 61801
A FOLDER DESCRIBING TOPOGRAPHIC MAPS AND SYMBOLS IS AVAILABLE ON REQUEST



ROAD CLASSIFICATION
Heavy-duty ——— Light-duty ———
Medium-duty ——— Unimproved dirt ———
U.S. Route ——— State Route ———

WHEATON, ILL.
SE 1/4 WHEATON 15 QUADRANGLE
N4145—W8800/7.5

1962
PHOTOREVISED 1972
AMS 3367 1 SE-SERIES V863

Revisions shown in purple compiled from aerial photographs
taken 1972. This information not field checked
Purple tint indicates extension of urban areas

3625