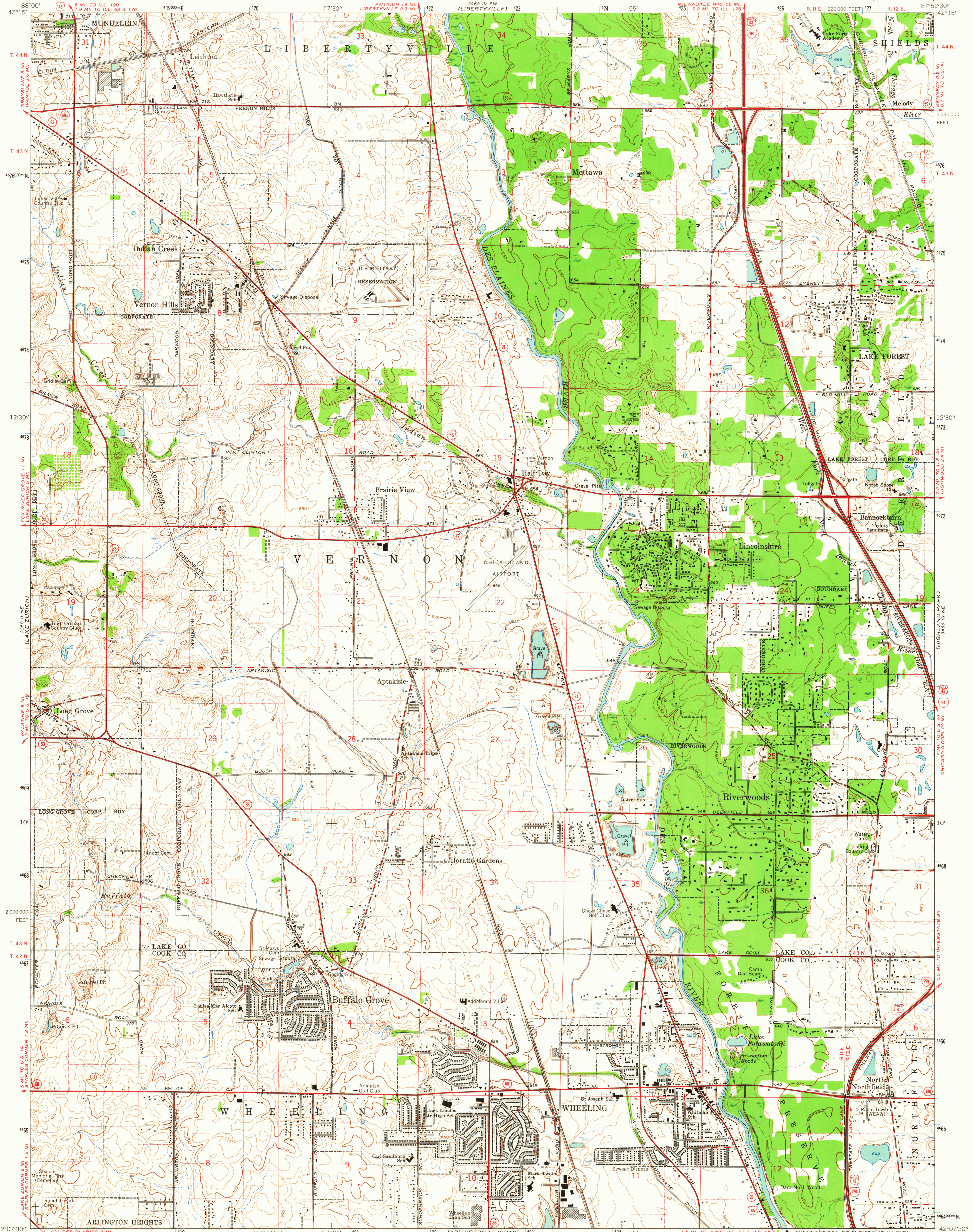


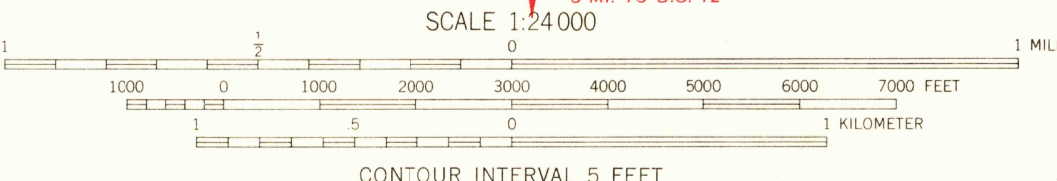
UNITED STATES
DEPARTMENT OF THE INTERIOR
GEOLOGICAL SURVEY

WHEELING QUADRANGLE
ILLINOIS
7.5 MINUTE SERIES (TOPOGRAPHIC)



Mapped, edited, and published by the Geological Survey
in cooperation with State of Illinois Geological Survey
Control by USGS, USC&GS, and Cook County Highway Department
Planimetry by photogrammetric methods from aerial photographs
taken 1962. Topography by planetable surveys 1926. Revised 1963
Polyconic projection. 1927 North American datum
10,000-foot grid based on Illinois coordinate system, east zone
1000-meter Universal Transverse Mercator grid ticks,
zone 16, shown in blue
Fine red dashed lines indicate selected fence and field lines where
generally visible on aerial photographs. This information is unchecked

UTM GRID AND 1963 MAGNETIC NORTH
DECLINATION AT CENTER OF SHEET



USGS
Historical File
Topographic Division



ROAD CLASSIFICATION
Heavy-duty ——— Light-duty ———
Medium-duty ——— Unimproved dirt ———
Interstate Route U. S. Route State Route

WHEELING, ILL.
N4207.5—W8752.5/7.5

1963
AMS 3468 III NW—SERIES V863

THIS MAP COMPLIES WITH NATIONAL MAP ACCURACY STANDARDS
FOR SALE BY U. S. GEOLOGICAL SURVEY, WASHINGTON 25, D. C.
AND BY THE STATE GEOLOGICAL SURVEY, URBANA, ILLINOIS
A FOLDER DESCRIBING TOPOGRAPHIC MAPS AND SYMBOLS IS AVAILABLE ON REQUEST

OCT 2 1964

USGS
FILE COPY
TOPOGRAPHIC DIVISION