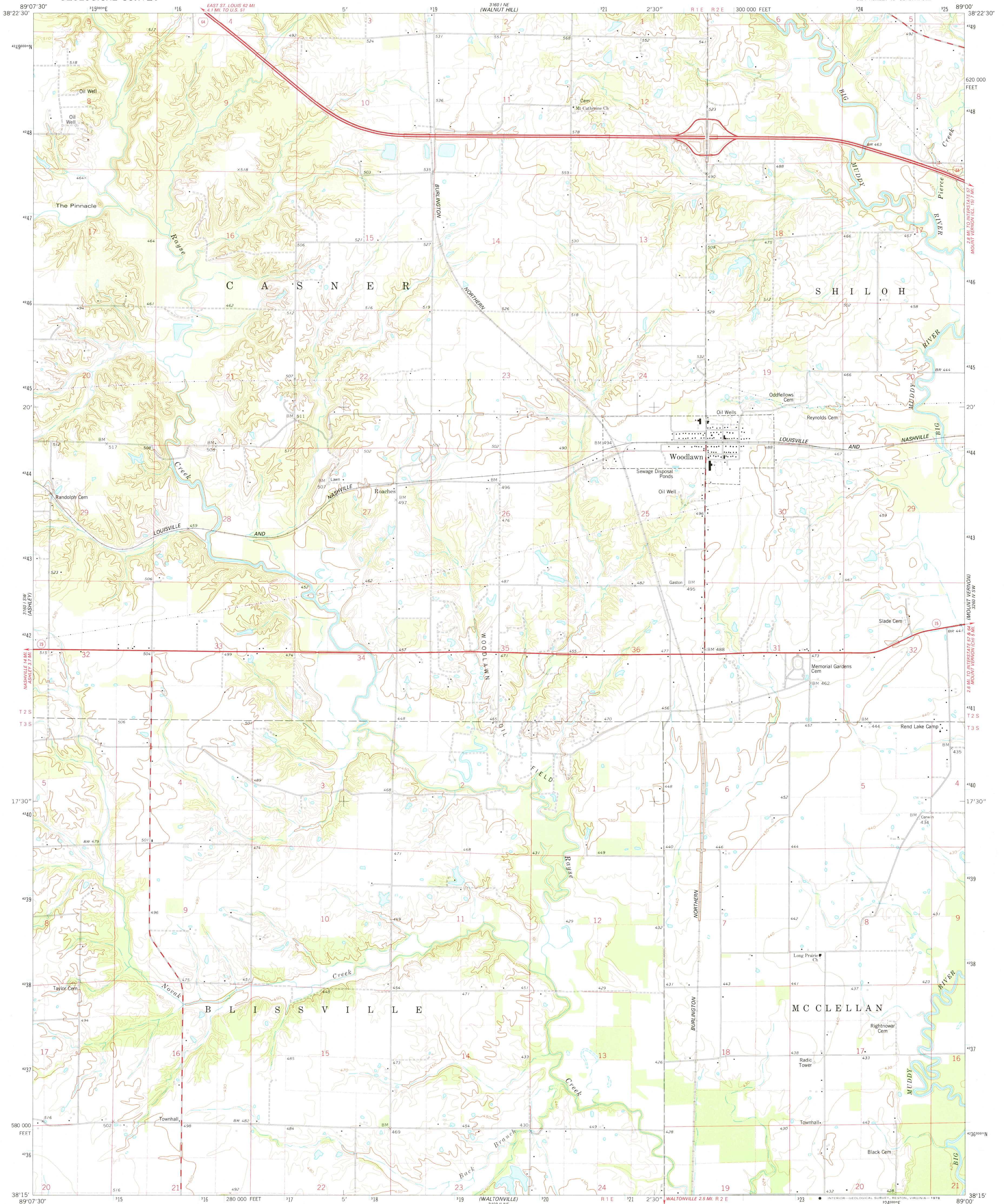


UNITED STATES  
DEPARTMENT OF THE INTERIOR  
GEOLOGICAL SURVEY

WOODLAWN QUADRANGLE  
ILLINOIS—JEFFERSON CO.  
7.5 MINUTE SERIES (TOPOGRAPHIC)  
SE/4 ASHLEY 15' QUADRANGLE



Mapped, edited, and published by the Geological Survey  
Control by USGS and NOS/NOAA  
Topography by photogrammetric methods from aerial  
photographs taken 1973. Field checked 1974  
Projection and 10,000-foot grid ticks: Illinois coordinate  
system, east zone (transverse Mercator)  
1000-meter Universal Transverse Mercator grid ticks,  
zone 16, shown in blue. 1927 North American datum  
Fine red dashed lines indicate selected fence and field lines where  
generally visible on aerial photographs. This information is unchecked

UTM GRID AND 1974 MAGNETIC NORTH  
DECLINATION AT CENTER OF SHEET

SCALE 1:24,000  
CONTOUR INTERVAL 10 FEET  
NATIONAL GEODETIC VERTICAL DATUM OF 1929

THIS MAP COMPLIES WITH NATIONAL MAP ACCURACY STANDARDS  
FOR SALE BY U. S. GEOLOGICAL SURVEY, RESTON, VIRGINIA 22092  
AND BY THE STATE GEOLOGICAL SURVEY, URBANA, ILLINOIS 61801  
A FOLDER DESCRIBING TOPOGRAPHIC MAPS AND SYMBOLS IS AVAILABLE ON REQUEST

ROAD CLASSIFICATION  
Primary highway, hard surface  
Secondary highway, hard surface  
Unimproved road  
Interstate Route  
U. S. Route  
State Route



USGS  
Historical File  
Topographic Division

WOODLAWN, ILL.  
SE/4 ASHLEY 15' QUADRANGLE  
N3815-W8900/7.5  
1974

AMS 3160 1 SE—SERIES V863

AUG 0 3 1978