

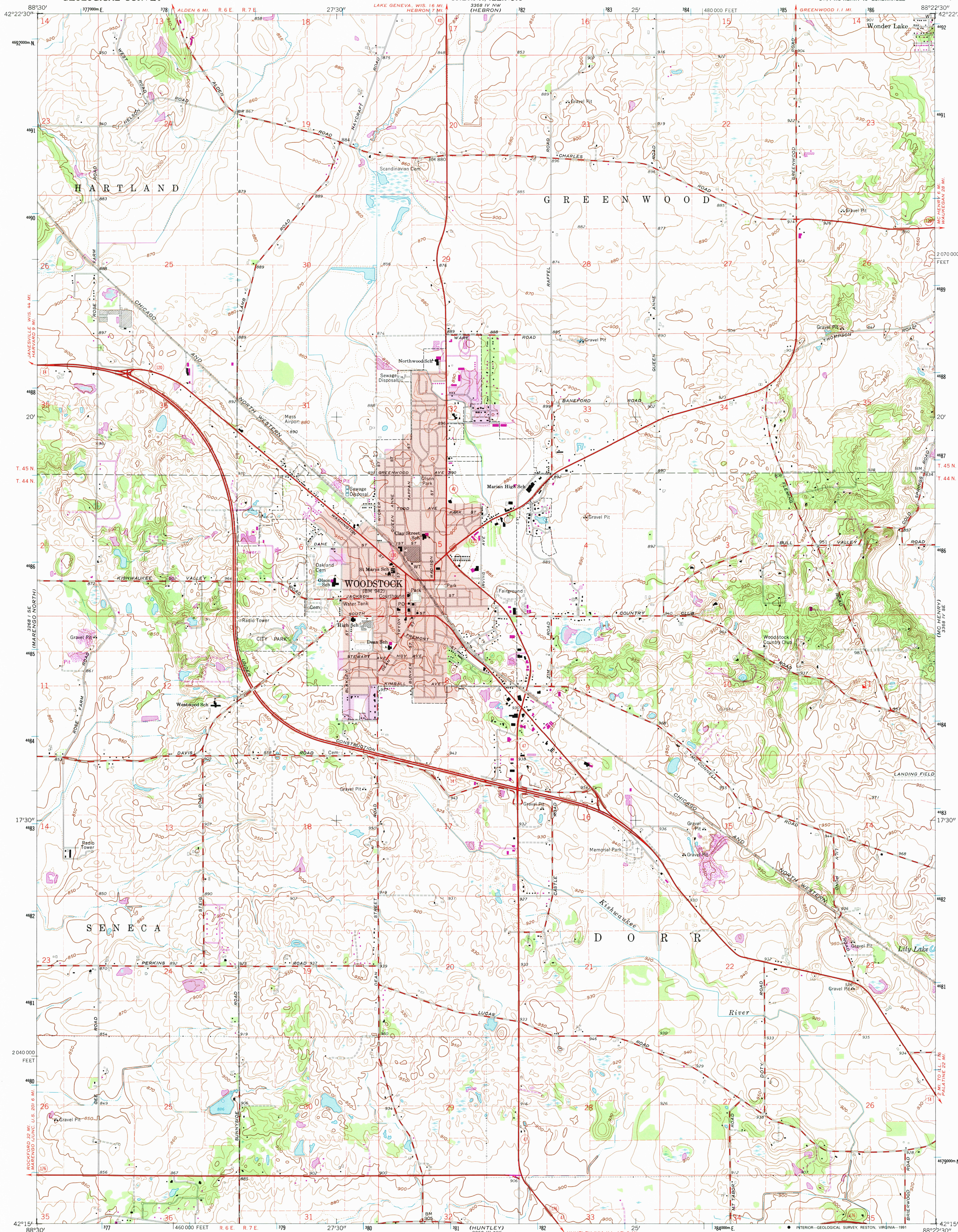
3268 I NE
(HARVARD)

UNITED STATES
DEPARTMENT OF THE INTERIOR
GEOLOGICAL SURVEY

STATE OF ILLINOIS
DEPARTMENT OF REGISTRATION AND EDUCATION
GEOLOGICAL SURVEY DIVISION
URBANA, ILLINOIS

WOODSTOCK QUADRANGLE
ILLINOIS—MC HENRY CO.
7.5 MINUTE SERIES (TOPOGRAPHIC)
SW 1/4 MC HENRY 15' QUADRANGLE

3268 IV NE
(RICHTMOND)



Mapped, edited, and published by the Geological Survey
Control by USGS and USC&GS

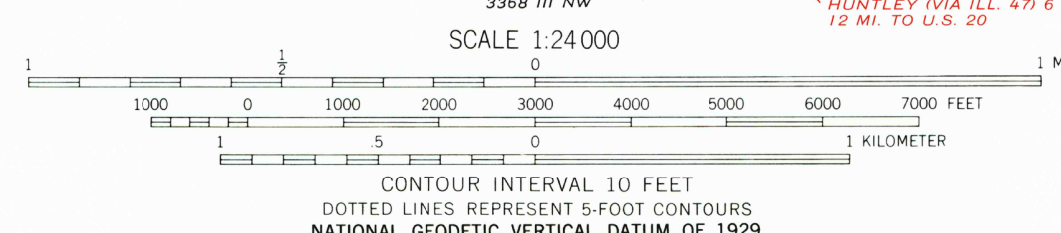
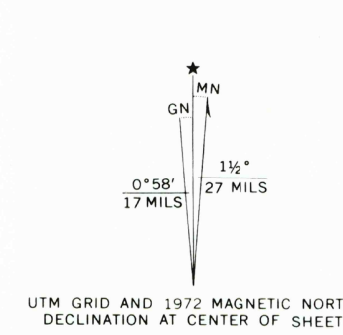
Topography by photogrammetric methods from aerial
photographs taken 1961. Field checked 1963

Polycyclic projection. 1927 North American datum
10,000-foot grid based on Illinois coordinate system, east zone
1000-meter Universal Transverse Mercator grid ticks,
zone 16, shown in blue

Red tint indicates area in which only landmark buildings are shown
Fine red dashed lines indicate selected fence and field lines where
generally visible on aerial photographs. This information is unchecked

Revisions shown in purple compiled from aerial photographs
taken 1972. This information not field checked

Purple tint indicates extension of urban areas



The difference between 1927 North American Datum and North
American Datum of 1983 (NAD 83) for 7.5-minute intersections
is given in USGS Bulletin 1875. The NAD 83 is shown by
dashed corner ticks

ROAD CLASSIFICATION
Heavy-duty ——— Light-duty ———
Medium-duty ——— Unimproved dirt ———
U.S. Route ——— State Route ———

WOODSTOCK, ILL.
SW 1/4 MC HENRY 15' QUADRANGLE
42088-C4-TF-024
PHOTOINSPECTED 1978
PHOTOVISITED 1972
DMA 3368 IV SW—SERIES V863

USGS AND HISTORICAL
MAP ARCHIVES
SEP 18 1991
REC'D FILE COPY