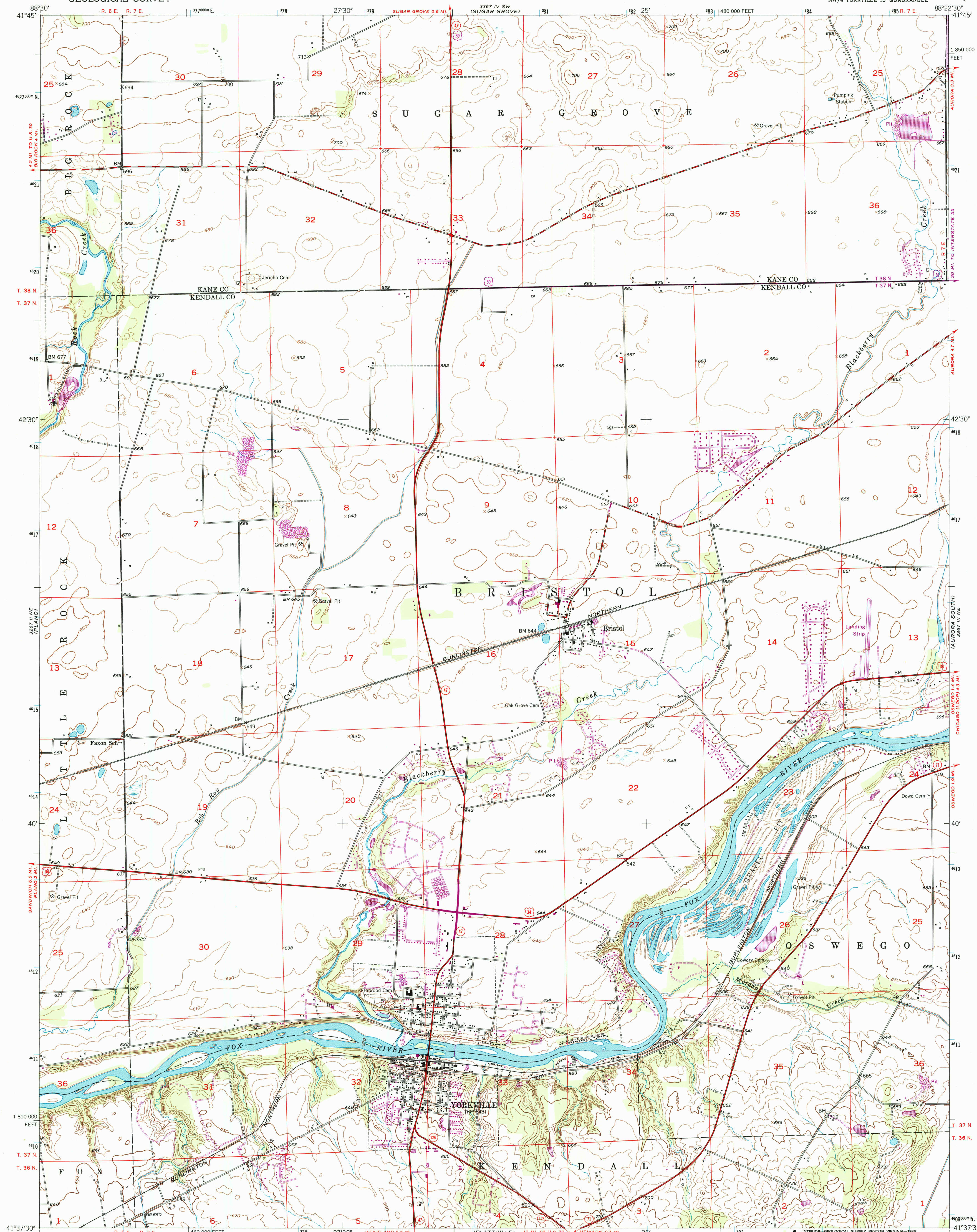


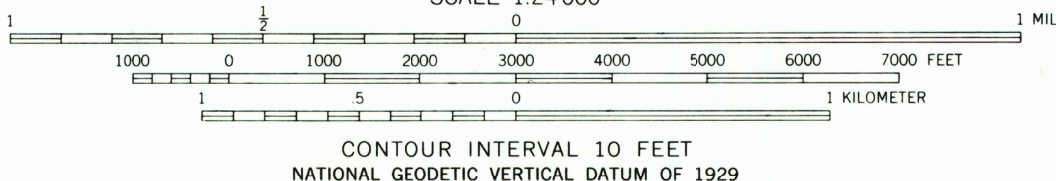
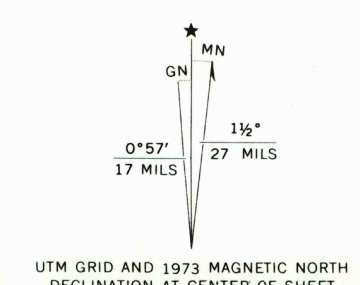
UNITED STATES
DEPARTMENT OF THE INTERIOR
GEOLOGICAL SURVEY

YORKVILLE QUADRANGLE
ILLINOIS
7.5 MINUTE SERIES (TOPOGRAPHIC)
NW 1/4 YORKVILLE 15' QUADRANGLE



USGS AND HISTORICAL MAP
OCT 16 1986
REC'D FILE COPY

Maped, edited, and published by the Geological Survey
Control by USGS and USC&GS
Topography by Kelsh plotter from aerial photographs
taken 1952 and by planetable surveys 1953
Polyconic projection. 1927 North American datum
10,000-foot grid based on Illinois coordinate system, east zone
1000-meter Universal Transverse Mercator grid ticks,
zone 16, shown in blue
Revisions shown in purple compiled from aerial photographs
taken 1973. This information not field checked
Purple tint indicates extension of urban area
To place on the predicted North American Datum 1983,
move the projection lines 2 meters north and
6 meters east as shown by dashed corner ticks



ROAD CLASSIFICATION
Heavy-duty ——— 4 LANE 6 LANE Light-duty ———
Medium-duty ——— 4 LANE 6 LANE Unimproved dirt ———
U.S. Route ——— State Route ———

YORKVILLE, ILL.
NW 1/4 YORKVILLE 15' QUADRANGLE
41088-F4-TF-024

1953
PHOTOREVISED 1973
DMA 3367 III NW—SERIES V863

THIS MAP COMPLIES WITH NATIONAL MAP ACCURACY STANDARDS
FOR SALE BY U.S. GEOLOGICAL SURVEY, RESTON, VIRGINIA 22092
AND ILLINOIS GEOLOGICAL SURVEY, CHAMPAIGN, ILLINOIS 61820
A FOLDER DESCRIBING TOPOGRAPHIC MAPS AND SYMBOLS IS AVAILABLE ON REQUEST