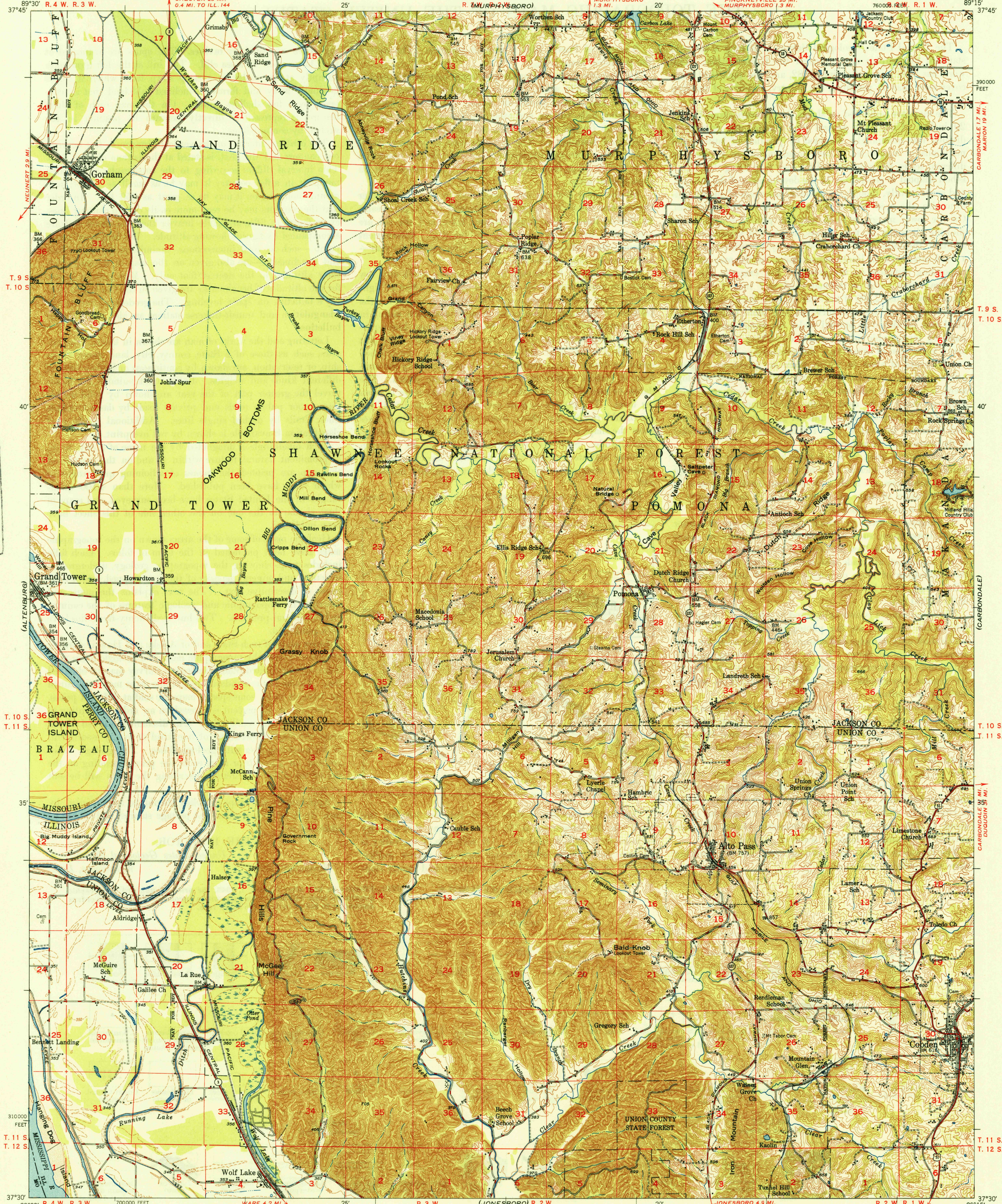


UNITED STATES
DEPARTMENT OF THE INTERIOR
GEOLOGICAL SURVEY

UNITED STATES
DEPARTMENT OF THE ARMY
CORPS OF ENGINEERS

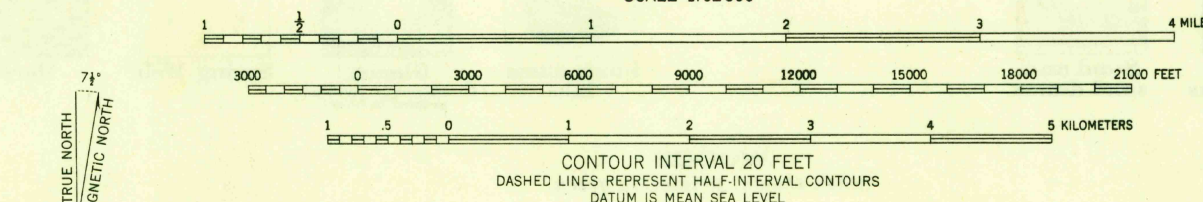
ALTO PASS QUADRANGLE
ILLINOIS-MISSOURI
15 MINUTE SERIES (TOPOGRAPHIC)



U.S.G.S.
FILE COPY
Inspection and Editing.

U.S.G.S.
FILE COPY
Inspection and Editing.

Maped, edited, and published by the Geological Survey
Control by USGS, USC&GS, and USED
Topography from aerial photographs by multiplex methods
and plane-table methods 1947
Aerial photographs taken 1946. Field check 1947
Transverse Mercator projection. 1927 North American datum
10,000-foot grid based on Illinois coordinate system,
west zone



USCS
Historical File
Topographic Division

ROAD CLASSIFICATION

| ROAD CLASSIFICATION | |
|---|-----------------------------------|
| HARD-SURFACE ALL WEATHER ROADS | DRY WEATHER ROADS |
| Heavy-duty, <u>LANE LANE</u> | Improved dirt, <u>LANE LANE</u> |
| Medium-duty, <u>LANE LANE</u> | Unimproved dirt, <u>LANE LANE</u> |
| Loose-surface, graded, or narrow hard-surface, <u>LANE LANE</u> | |
| U. S. Route | State Route |

WOODLAND
Woods-Brushwood
Orchard

THIS MAP COMPLIES WITH NATIONAL MAP ACCURACY STANDARDS
FOR SALE BY U. S. GEOLOGICAL SURVEY, WASHINGTON 25, D. C.
AND BY THE STATE GEOLOGICAL SURVEY, URBANA, ILLINOIS

U.S.G.S.
FILE COPY
Inspection and Editing.

ALTO PASS, ILL.-MO.
N3730-W8915/15
PRINTED 1949

JUL 15 1949 4305