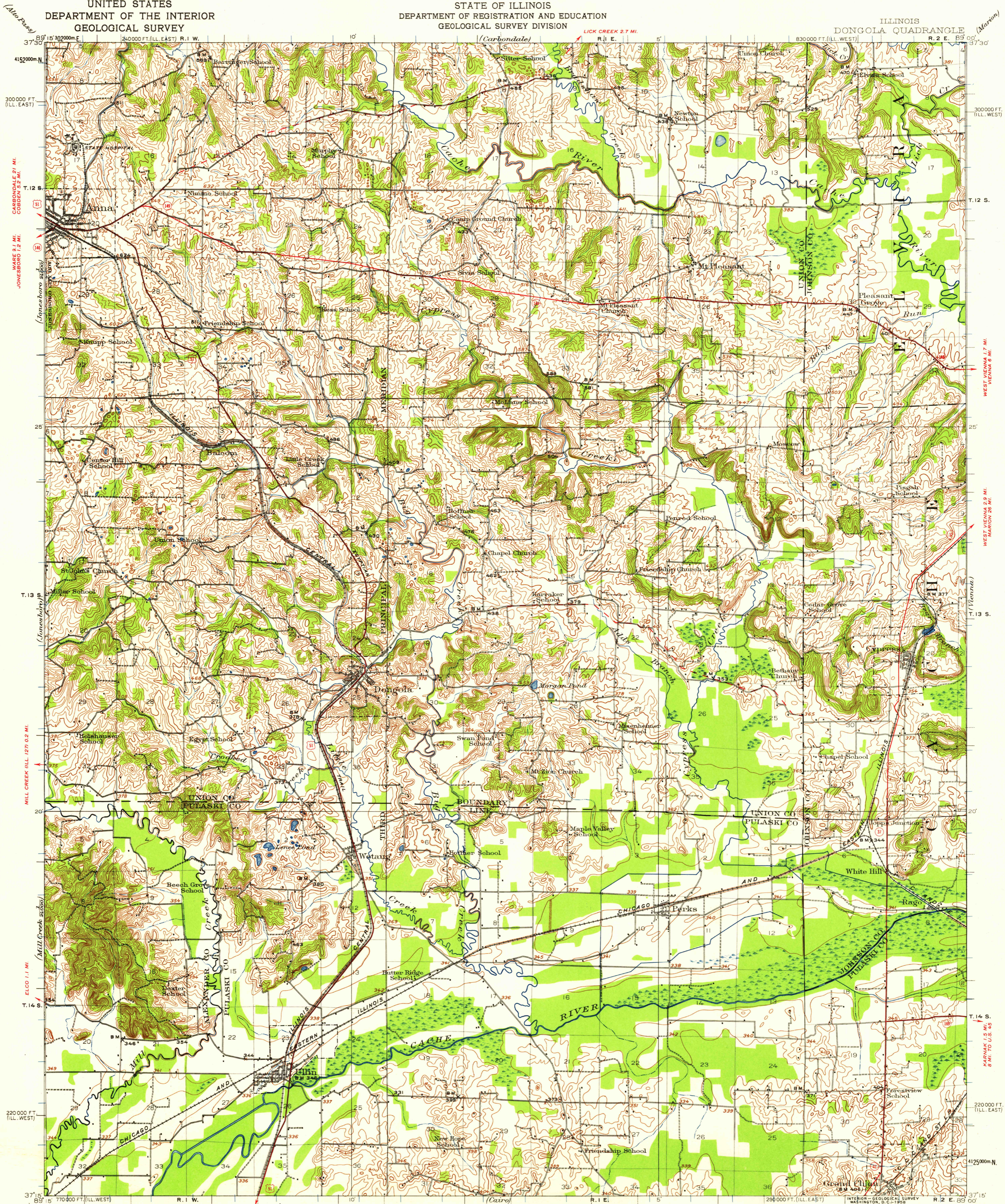


UNITED STATES  
DEPARTMENT OF THE INTERIOR  
GEOLOGICAL SURVEY

STATE OF ILLINOIS  
DEPARTMENT OF REGISTRATION AND EDUCATION  
GEOLOGICAL SURVEY DIVISION

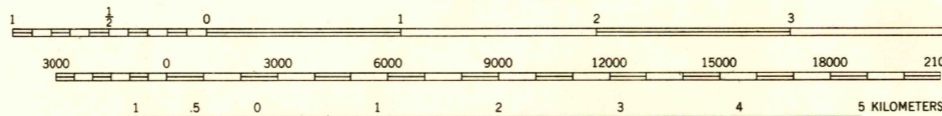
ILLINOIS  
DONGOLA QUADRANGLE



ROAD CLASSIFICATION

- Heavy-duty
- Light-duty
- Medium-duty
- Unimproved dirt
- U.S. Route
- State Route

APPROXIMATE MEAN  
DECLINATION, 1920



CONTOUR INTERVAL 20 FEET  
DATUM IS MEAN SEA LEVEL

FOR SALE BY U.S. GEOLOGICAL SURVEY, WASHINGTON 25, D. C.  
AND BY THE STATE GEOLOGICAL SURVEY, URBANA, ILLINOIS  
A FOLDER DESCRIBING TOPOGRAPHIC MAPS AND SYMBOLS IS AVAILABLE ON REQUEST

USGS  
Historical File  
Topographic Division

U.S.G.S.  
FILE COPY  
TOPOGRAPHIC DIVISION

Polyconic projection. To place on 1927 North American datum  
move projection lines 10 feet north and 10 feet east 322000m E.  
10 000 foot grids based on Illinois (West) and Illinois (East)  
coordinate system  
1000-meter Universal Transverse Mercator grid ticks,  
zone 16, shown in blue

OLMSTEAD 6 MI.  
MOUND CITY 14 MI.

DONGOLA, ILL.  
N3715-W8900/15

1920

OCT - 3 1958

1935