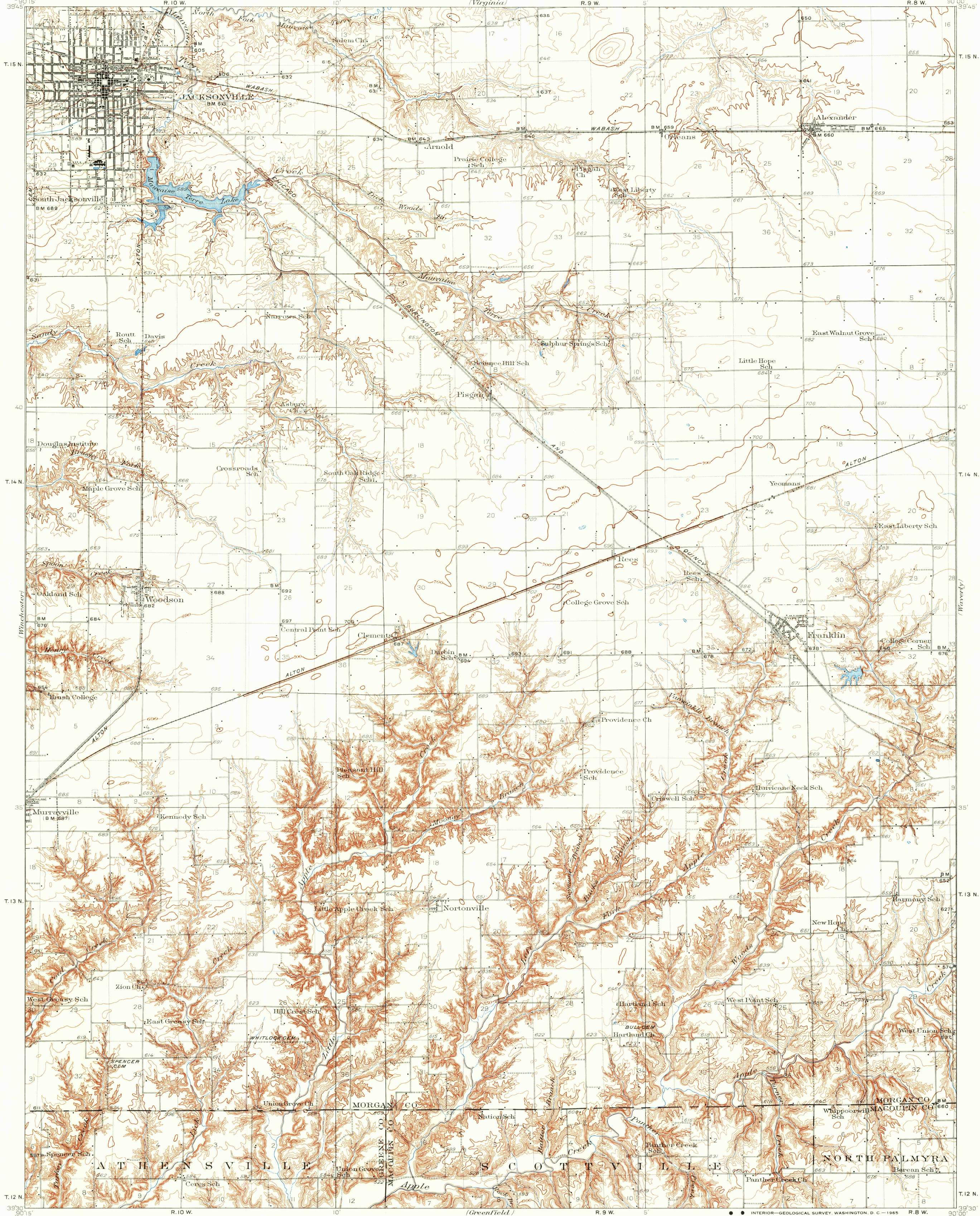


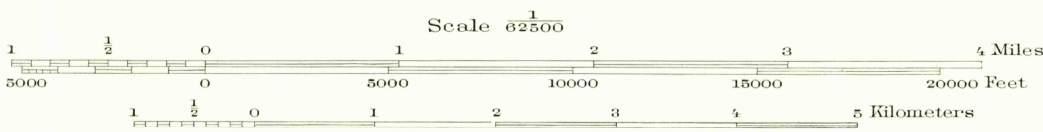
UNITED STATES
DEPARTMENT OF THE INTERIOR
GEOLOGICAL SURVEY

STATE OF ILLINOIS
DEPARTMENT OF REGISTRATION AND EDUCATION
GEOLOGICAL SURVEY DIVISION
(Virginia)

ILLINOIS
JACKSONVILLE QUADRANGLE



Topography by J.A. Duck, K. Mudd, W.S. Beames, F.H. Sargent,
H.P. Jones, J.M. Holmes, W.A. Tingey, J.H. Taubert, and F.W. Weber
Control by U.S. Geological Survey
Surveyed in 1930-1932



USGS
Historical File
Topographic Division

Polyconic projection. 1927 North American datum

U.S.G.S.
JACKSONVILLE, ILL.
N3930-W9000/15
1932
FILE COPY
TOPOGRAPHIC DIVISION

FOR SALE BY U. S. GEOLOGICAL SURVEY, WASHINGTON 25, D. C.
AND BY THE STATE GEOLOGICAL SURVEY, URBANA, ILLINOIS
A FOLDER DESCRIBING TOPOGRAPHIC MAPS AND SYMBOLS IS AVAILABLE ON REQUEST

MAR 17 1965
1645