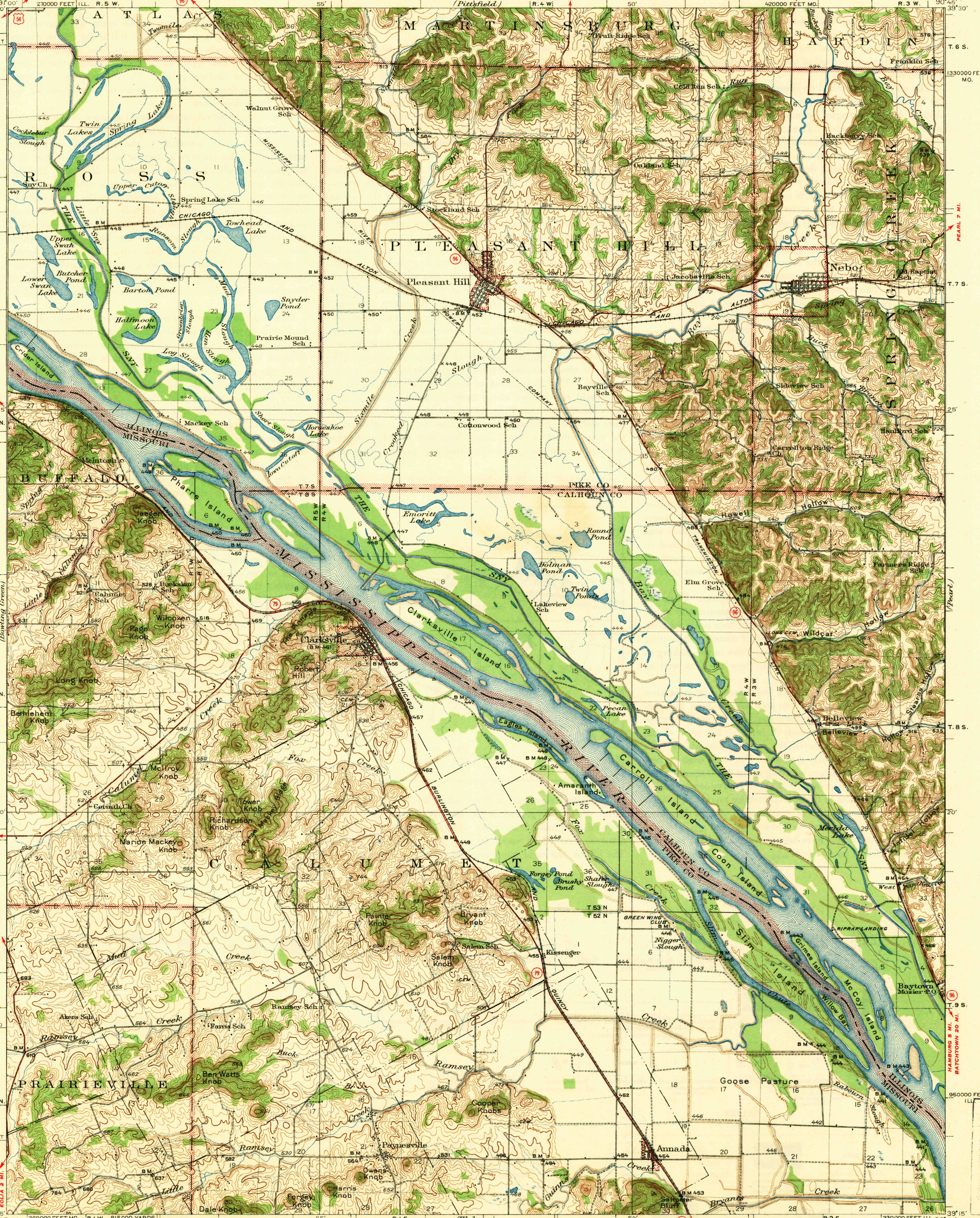


JACKSONVILLE 52 MI. ATLAS 2 MI. UNITED STATES DEPARTMENT OF THE INTERIOR GEOLOGICAL SURVEY
QUINCY 42 1/2 MI. ATLAS 1 1/2 MI. STATE OF ILLINOIS DWIGHT H. GREEN, GOVERNOR DEPARTMENT OF REGISTRATION AND EDUCATION FRANK G. THOMPSON, DIRECTOR
PITTSFIELD 8 1/2 MI. INDEPENDENCE 2 MI. MARTINSBURG 1 MI. STATE OF MISSOURI GEOLOGICAL SURVEY AND WATER RESOURCES H.A. BUEHLER, STATE GEOLOGIST
ILLINOIS-MISSOURI NEBO QUADRANGLE



Topography by F.W. Hughes, J.A. Duck, S.T. Penick, W.A. Tingey
Arthur Johnson, H.T. Heimberger, and L.H. Bray
Culture and drainage in part compiled from aerial photographs
taken by Air Corps U.S. Army
Surveyed in 1926, 1927, and 1934
USGS Historical File Topographic Division
Scale 42500
Contour interval 20 feet
Datum is mean sea level
Polyconic projection. 1927 North American datum
5000 yard grid based on U.S. zone system, C
10000 foot grid based on Missouri (East) and
Illinois (West) rectangular coordinate systems
JUN 24 1942
N3915-W9045/15