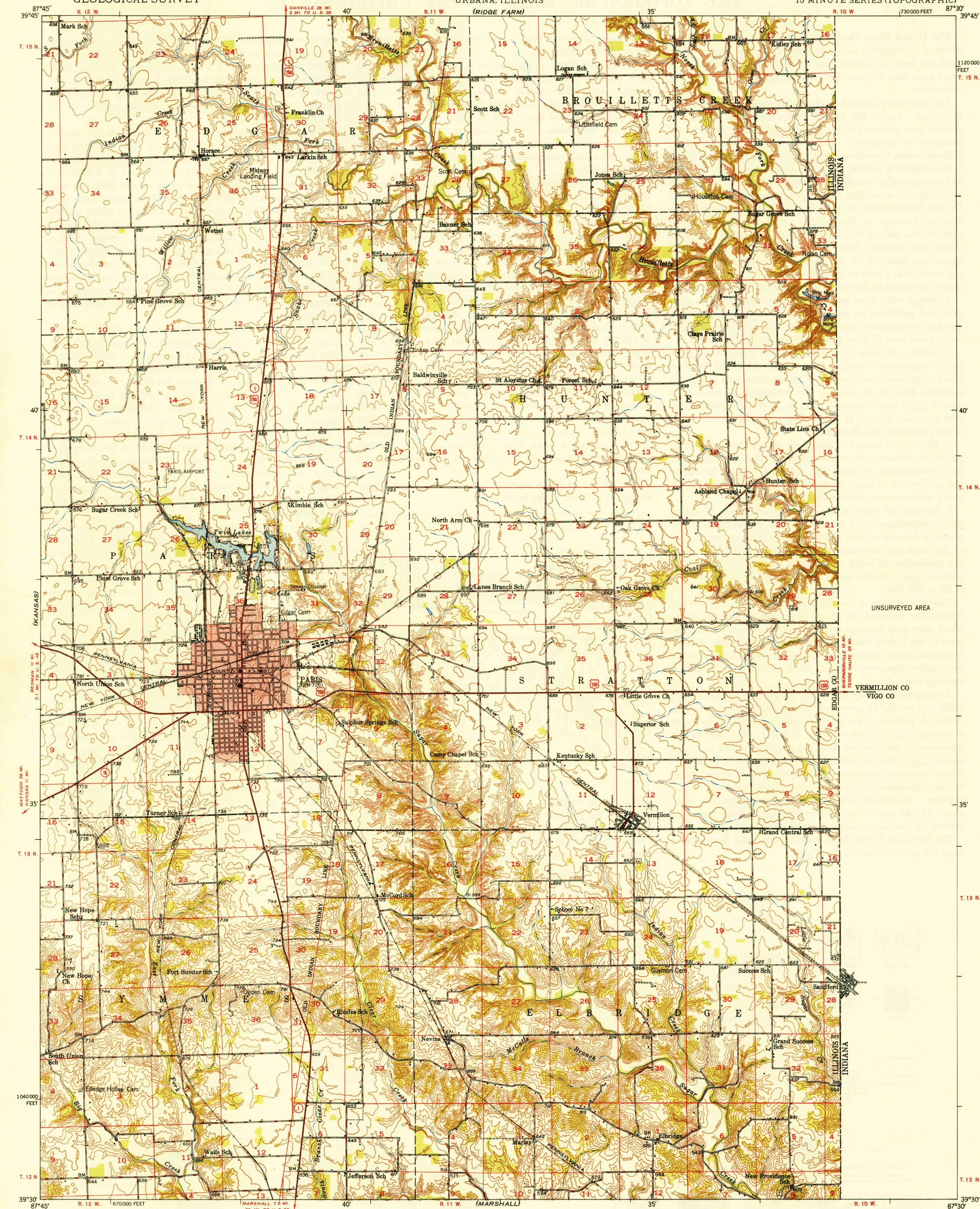


UNITED STATES
DEPARTMENT OF THE INTERIOR
GEOLOGICAL SURVEY

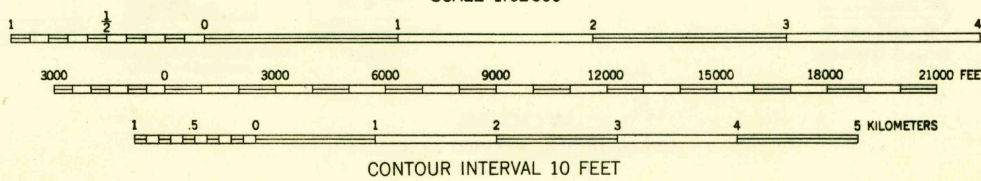
STATE OF ILLINOIS
ADLAI E. STEVENSON, GOVERNOR
DEPARTMENT OF REGISTRATION AND EDUCATION
FRANK G. THOMPSON, DIRECTOR
GEOLOGICAL SURVEY DIVISION, M. M. LEIGHTON, CHIEF,
URBANA, ILLINOIS

PARIS QUADRANGLE
ILLINOIS - INDIANA
15 MINUTE SERIES (TOPOGRAPHIC)



Mapped, edited, and published by the Geological Survey
Control by USGS and USC&GS
Culture and drainage in part compiled from
aerial photographs taken 1938
Topography by plane-table methods 1947
Polyconic projection. 1927 North American datum
10,000-foot grid based on Illinois coordinate system,
East zone
Red tint indicates area in which only
landmark buildings are shown

TRUE NORTH
MAGNETIC NORTH
APPROXIMATE MEAN
DECLINATION, 1947



THIS MAP COMPLIES WITH NATIONAL MAP ACCURACY STANDARDS
FOR SALE BY U. S. GEOLOGICAL SURVEY, WASHINGTON 25, D. C.
AND BY THE STATE GEOLOGICAL SURVEY, URBANA, ILLINOIS

ROAD CLASSIFICATION
HARD-SURFACE ALL WEATHER ROADS DRY WEATHER ROADS
Heavy-duty... 4 LANE LANE Improved dirt...
Medium-duty... 4 LANE LANE Unimproved dirt...
Loose-surface, graded, or narrow hard-surface...
U. S. Route State Route

PARIS, ILL. - IND.
N3930-W8730/15
PRINTED 1949