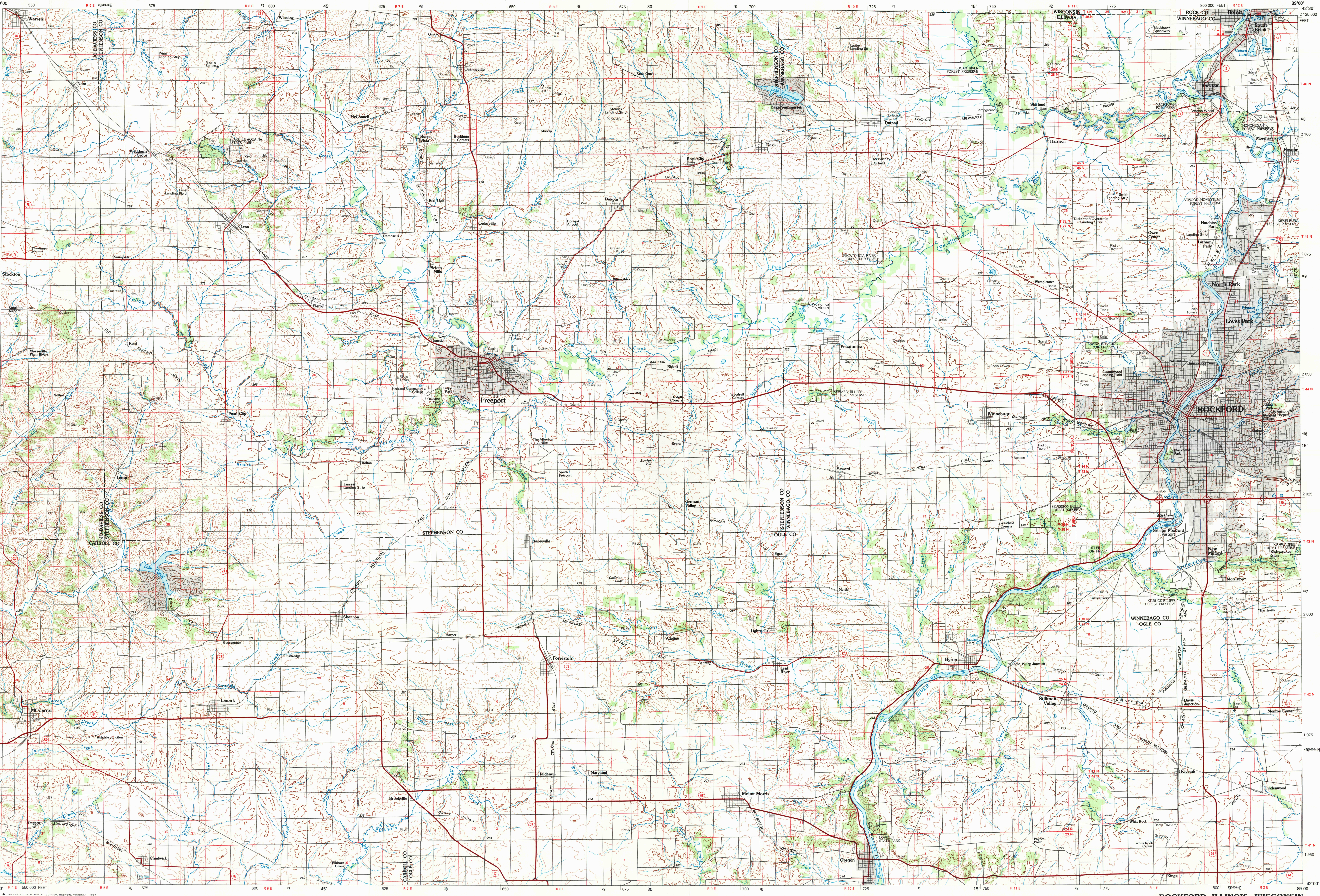


ROCKFORD, ILLINOIS-WISCONSIN

30 X 60 MINUTE SERIES (TOPOGRAPHIC)

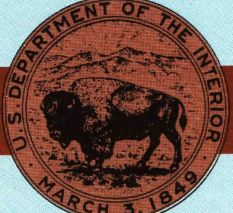


1:100 000-scale metric  
topographic map of  
**Rockford**  
ILLINOIS-WISCONSIN



30 X 60 MINUTE QUADRANGLE  
SHOWING

- Contours and elevations in meters
- Highways, roads and other manmade structures
- Water features
- Woodland areas
- Geographic names



GEOLOGICAL SURVEY

1981

Produced by the United States Geological Survey  
Compiled from USGS 1:25 000 and 1:62 500-scale topographic maps dated 1922-1978. Planimetry revised from aerial photographs taken 1978 and other source data. Revised information not field checked. Map edited 1981.  
Projection and 10 000-meter grid, zone 16,  
Universal Transverse Mercator  
25 000-foot grid ticks based on Illinois coordinate system, west zone  
1927 North American Datum  
To place on the predicted North American Datum 1983 move the projection lines 3 meters north and 9 meters east  
There may be private inholdings within the boundaries of the National or State reservations shown on this map

CONTOUR INTERVAL 10 METERS  
NATIONAL GEODETIC VERTICAL DATUM OF 1929  
ELEVATIONS SHOWN TO THE NEAREST METER

THIS MAP COMPLIES WITH NATIONAL MAP ACCURACY STANDARDS

CONVERSION TABLE		DECLINATION DIAGRAM	ADJOINING MAPS		
Meters	Feet		1	2	3
1	3.2808		1	2	3
2	6.5617		4	5	
3	9.8425		6	7	8
4	13.1234				
5	16.4042				
6	19.6850				
7	22.9659				
8	26.2467				
9	29.5275				
10	32.8084				
To convert meters to feet multiply by 3.2808 To convert feet to meters multiply by 0.3048		UTM grid convergence (GN and 1983 magnetic declination (MN)) at center of map. Diagram is approximate.			
		1 Monroe 2 Lake Geneva 3 Elgin 4 Elgin 5 Elgin 6 Elgin 7 Elgin 8 Elgin			

FOR SALE BY U. S. GEOLOGICAL SURVEY  
RESTON, VIRGINIA 22092

Topographic Map Symbols

Primary highway, hard surface	
Secondary highway, hard surface	
Light duty road, principal street, hard or improved surface	
Other road or street, trail	
Route marker: interstate, U.S., State	
Railroad: standard gage; narrow gage	
Bridge: overpass; underpass	
Tunnel: road; railroad	
Built up area; water; elevation	
Airport; landing field; landing strip	
National boundary	
State boundary	
County boundary	
National or State reservation boundary	
Land grant boundary	
U.S. public lands survey; range, township; section	
Range, township; section line; protected	
Power transmission line; pipeline	
Dam; dam with lock	
Cemetery; building	
Windmill; water well; spring	
Mine shaft; adit or cave; mine, quarry; gravel pit	
Campground; picnic area; U.S. location monument	
Ruins; cliff dwelling	
Distorted surface: strip mine, levee, sand	
Contours: index; intermediate; supplementary	
Bathymetric contours: index; intermediate	
Stream, lake, perennial; intermittent	
Rapids, large and small; falls, large and small	
Area to be submerged; marsh, swamp	
Land subject to controlled inundation; woodland	
Shrub; mangrove	
Orchard; vineyard	

A pamphlet describing topographic maps is available on request

SCALE 1:100 000

1 CENTIMETER ON THE MAP REPRESENTS 1 KILOMETER ON THE GROUND

CONTOUR INTERVAL 10 METERS

ROCKFORD, ILLINOIS-WISCONSIN  
N4200-W8900/30X60

1981