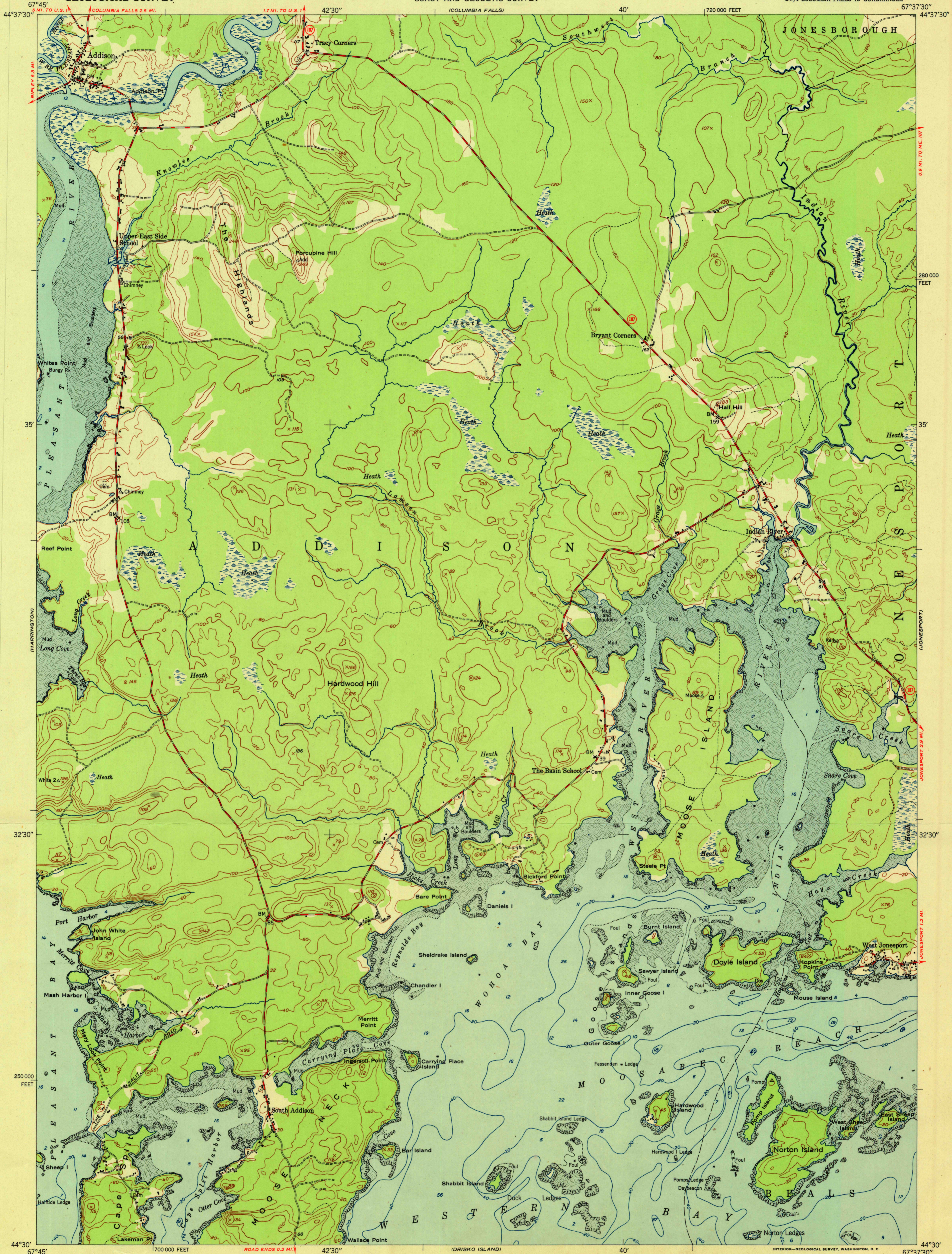


UNITED STATES
DEPARTMENT OF THE INTERIOR
GEOLOGICAL SURVEY

U.S.G.S.
FILE COPY
Inspection and Editing

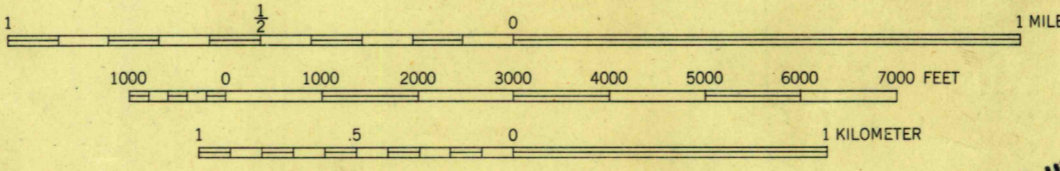
UNITED STATES
DEPARTMENT OF COMMERCE
COAST AND GEODETIC SURVEY

ADDISON QUADRANGLE
MAINE-WASHINGTON CO.
7.5 MINUTE SERIES (TOPOGRAPHIC)
SW/4 COLUMBIA FALLS 15' QUADRANGLE



Maped by the U. S. Coast & Geodetic Survey
Edited and published by the Geological Survey
Control by USCGS and USGS
Topography from aerial photographs by multiplex methods
Aerial photographs taken 1944. Field check 1948
Hydrography from surveys dated 1870 to 1902
Polyconic projection. 1927 North American datum
10,000-foot grid based on Maine coordinate system,
east zone
No distinction is made between dwellings, barns,
commercial and industrial buildings
Unchecked elevations are shown in brown

TRUE NORTH
MAGNETIC NORTH
APPROXIMATE MEAN
DECLINATION, 1948



CONTOUR INTERVAL 20 FEET
DATUM IS MEAN SEA LEVEL
DEPTH CURVES AND SOUNDINGS IN FEET-DATUM IS MEAN LOW WATER
SHORELINE SHOWN REPRESENTS THE APPROXIMATE LINE OF MEAN HIGH WATER
THE AVERAGE RANGE OF TIDE IS APPROXIMATELY 12 FEET
THIS MAP COMPLIES WITH NATIONAL MAP ACCURACY STANDARDS
FOR SALE BY U. S. GEOLOGICAL SURVEY, WASHINGTON 25, D. C.
A FOLDER DESCRIBING TOPOGRAPHIC MAPS AND SYMBOLS IS AVAILABLE ON REQUEST

RETURN TO:
USGS NATIONAL MAP ARCHIVES
RESTON, VA 22092

U.S.G.S.
FILE COPY
Inspection and Editing

ROAD CLASSIFICATION
HARD-SURFACE ALL WEATHER ROADS DRY WEATHER ROADS
Heavy-duty... LANE IS LANE Improved dirt...
Medium-duty... LANE IS LANE Unimproved dirt...
Loose-surface, graded, or narrow hard-surface...
U. S. Route State Route

ADDISON, ME.
SW/4 COLUMBIA FALLS 15' QUADRANGLE
N4430-W6737.5/7.5
EDITION OF 1951