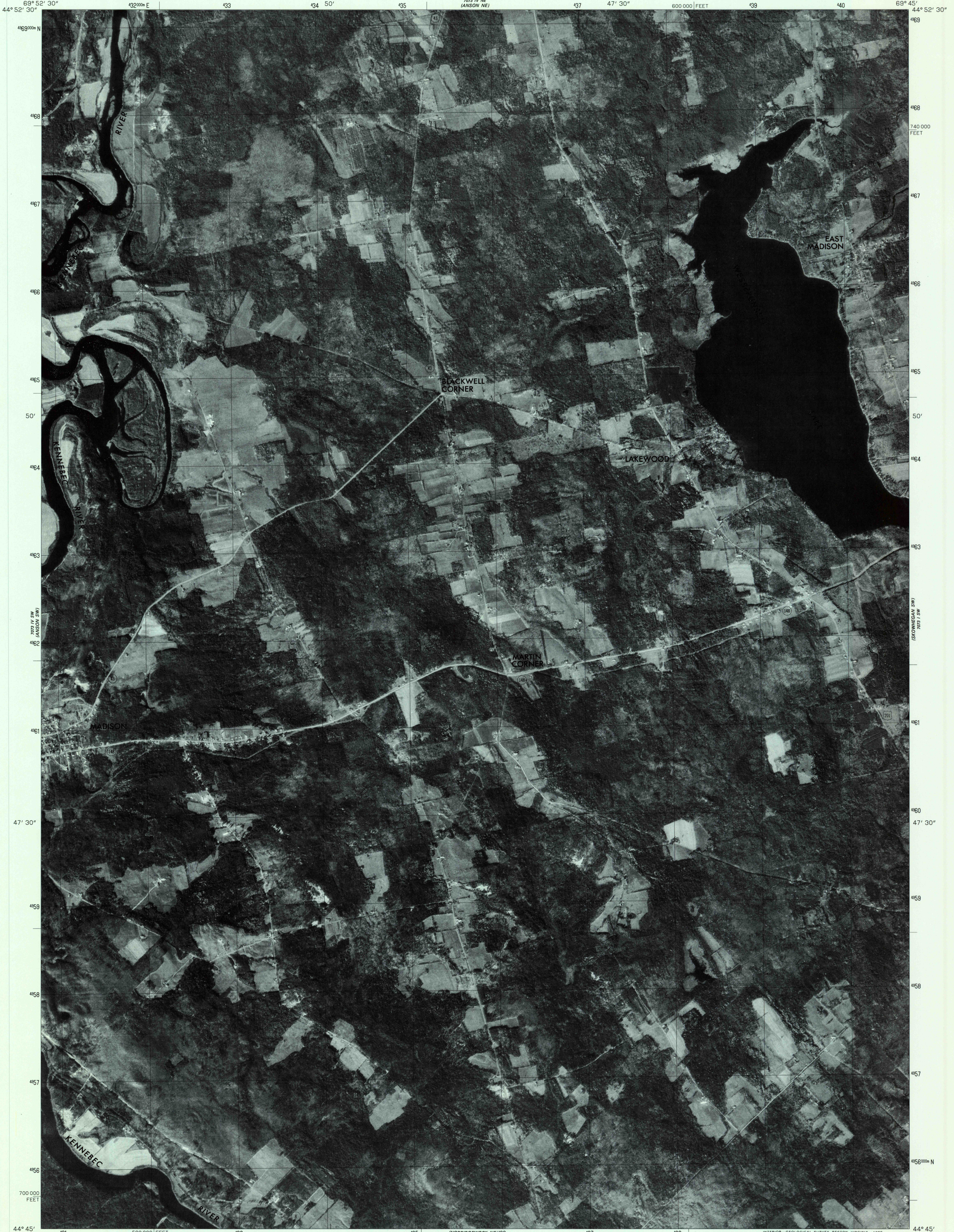


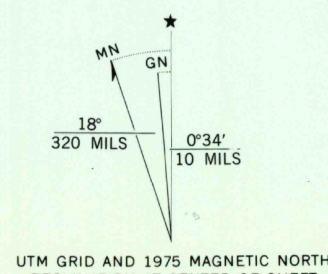
UNITED STATES
DEPARTMENT OF THE INTERIOR
GEOLOGICAL SURVEY

ANSON SE QUADRANGLE
MAINE
7.5 MINUTE SERIES ORTHOPHOTOQUAD



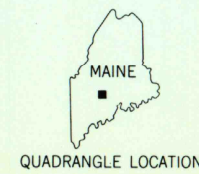
Produced and published by the Geological Survey

Orthophotograph prepared from 1:80,000-scale aerial photograph taken October 27, 1975
Projection and 10,000-foot grid ticks: Maine coordinate system, west zone (transverse Mercator) 1000-meter Universal Transverse Mercator grid, zone 19. 1927 North American datum
Photomagey rectified by optical scanning which may produce double or mismatched images; use the mean of image positions for map point



THIS MAP COMPLIES WITH NATIONAL MAP ACCURACY STANDARDS
FOR SALE BY U. S. GEOLOGICAL SURVEY, RESTON, VIRGINIA 22092

PRINCIPAL NUMBERED HIGHWAYS
Interstate Route U. S. Route State Route



This quadrangle area also covered by SE quarter of Anson 1:62,500-scale topographic map

USGS
Historical File
Topographic Division

ANSON SE, MAINE
N4445-W6945/7.5
1975

DMA 7073 IV SE-SERIES V011

AUG - 8 1980

1700