

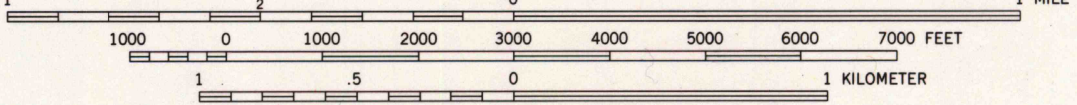
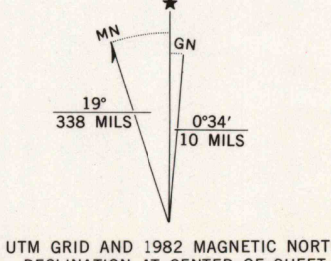


Mapped, edited, and published by the Geological Survey  
Control by USGS and NOS/NOAA

Topography by photogrammetric methods from aerial photographs  
taken 1976. Field checked 1977. Map edited 1982  
Selected hydrographic data compiled from NOS chart 13318 (1981)  
This information is not intended for navigational purposes

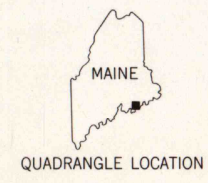
Projection and 10,000-foot grid ticks: Maine coordinate  
system, east zone (transverse Mercator). 1000-meter Universal  
Transverse Mercator grid, zone 19. 1927 North American Datum  
To place on the predicted North American Datum 1983 move the  
projection lines 1 meter south and 47 meters west as shown by  
dashed corner ticks

Red tint indicates area in which only landmark buildings are shown  
There may be private inholdings within the boundaries of  
the National or State reservations shown on this map



CONTOUR INTERVAL 20 FEET  
NATIONAL GEODETIC VERTICAL DATUM OF 1929  
DEPTH CURVES AND SOUNDINGS IN FEET—DATUM IS MEAN LOW WATER  
THE RELATIONSHIP BETWEEN THE TWO DATUMS IS VARIABLE  
SHORELINE SHOWN REPRESENTS THE APPROXIMATE LINE OF MEAN HIGH WATER  
THE MEAN RANGE OF TIDE IS APPROXIMATELY 10.5 FEET

THIS MAP COMPLIES WITH NATIONAL MAP ACCURACY STANDARDS  
FOR SALE BY U. S. GEOLOGICAL SURVEY, RESTON, VIRGINIA 22092  
A FOLDER DESCRIBING TOPOGRAPHIC MAPS AND SYMBOLS IS AVAILABLE ON REQUEST



ROAD CLASSIFICATION	
Primary highway, hard surface	Light-duty road, hard or improved surface
Secondary highway, hard surface	Unimproved road
Interstate Route	U. S. Route
	State Route

BAR HARBOR, MAINE  
NW/4 BAR HARBOR 15' QUADRANGLE  
44068-D2-TF-024

1982

DMA 7372 1 NW—SERIES V811

USGS NHD HISTORICAL MAP  
RETURN TO:  
NHD HISTORICAL MAP ARCHIVES  
USGS NATIONAL CENTER, MS-522  
RESTON, VA 22092  
REC'D FILE COPY

MAY 1984