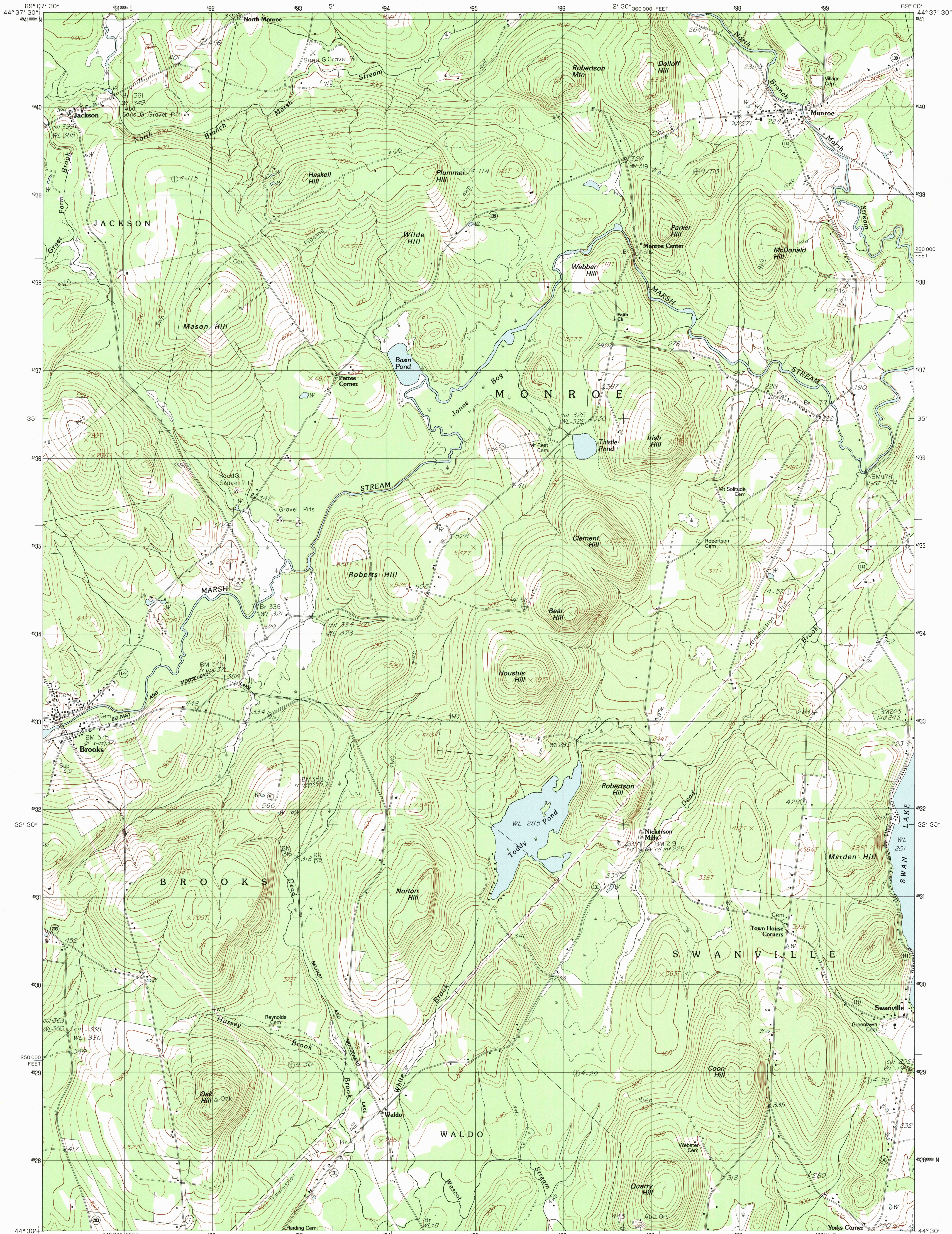


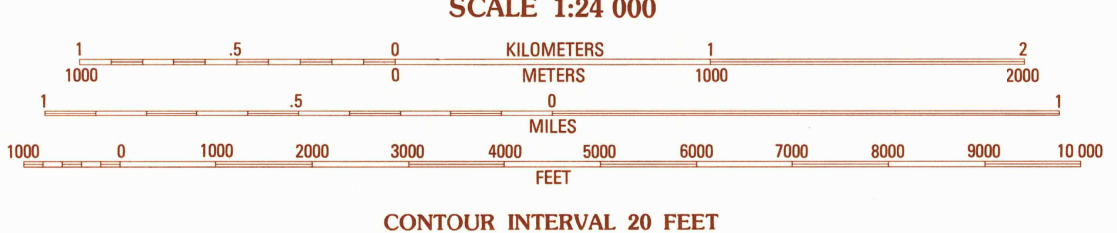
UNITED STATES
DEPARTMENT OF THE INTERIOR
GEOLOGICAL SURVEY

BROOKS EAST QUADRANGLE
MAINE—WALDO CO.
7.5 MINUTE SERIES (TOPOGRAPHIC)

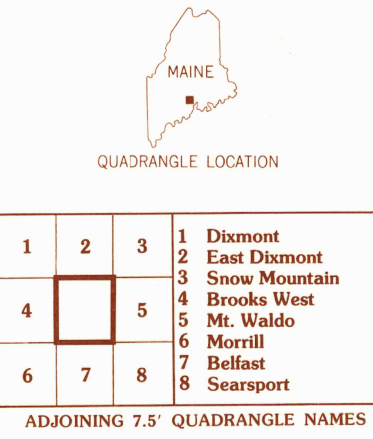


PRODUCED BY THE UNITED STATES GEOLOGICAL SURVEY
CONTROL BY U.S.G.S. AND NOS/NOAA
COMPILED FROM AERIAL PHOTOGRAPHS TAKEN . . . 1976
FIELD CHECKED . . . 1979 MAP EDITED . . . 1982
PROJECTION . . . TRANSVERSE MERCATOR
GRID: 1000-METER UNIVERSAL TRANSVERSE MERCATOR
10,000-FOOT STATE GRID TICS . . . MAINE, EAST ZONE
UTM GRID DECLINATION . . . 0°03' WEST
1982 MAGNETIC NORTH DECLINATION . . . 18°30' WEST
VERTICAL DATUM . . . NATIONAL GEODETIC VERTICAL DATUM OF 1929
HORIZONTAL DATUM . . . 1927 NORTH AMERICAN DATUM
To place on the predicted North American Datum of 1983, move
the projection lines as shown by dashed corner ticks
(3 meters south and 44 meters west)
There may be private inholdings within the boundaries of any
Federal and State Reservations shown on this map

PROVISIONAL MAP
Produced from original
manuscript drawings. Infor-
mation shown as of date of
field check



THIS MAP COMPLIES WITH NATIONAL MAP ACCURACY STANDARDS
FOR SALE BY U. S. GEOLOGICAL SURVEY, RESTON, VIRGINIA 22092



ROAD LEGEND
Improved Road
Unimproved Road
Trail
Interstate Route U. S. Route State Route

BROOKS EAST, MAINE
PROVISIONAL EDITION 1982
44069-E1-TF-024