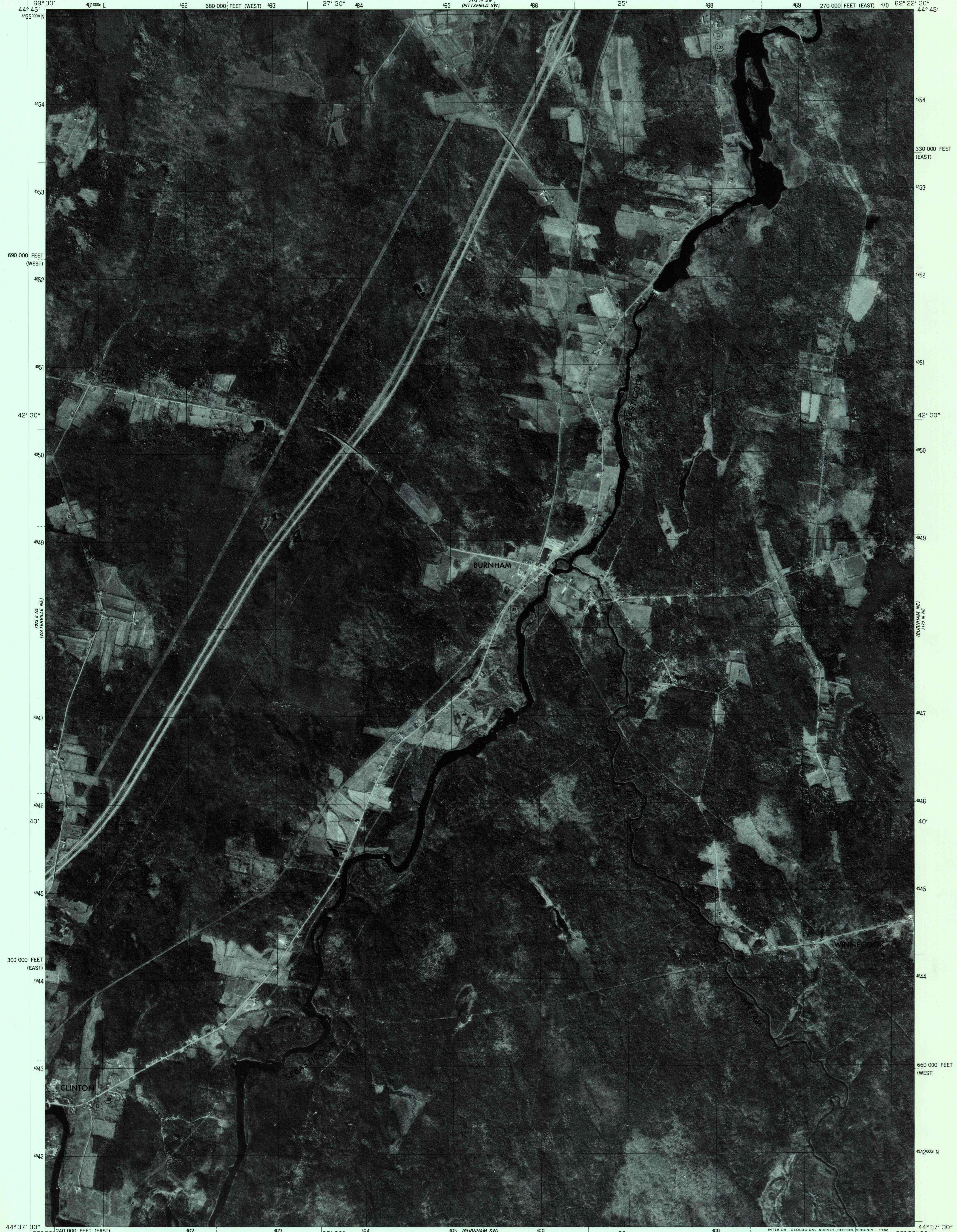


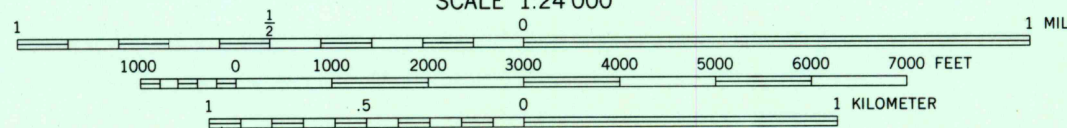
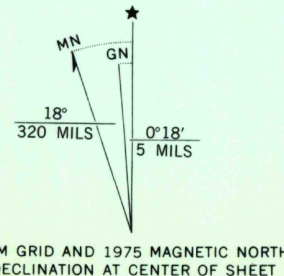
UNITED STATES
DEPARTMENT OF THE INTERIOR
GEOLOGICAL SURVEY

BURNHAM NW QUADRANGLE
MAINE
7.5 MINUTE SERIES ORTHOPHOTOQUAD



Produced and published by the Geological Survey

Orthophotograph prepared from 1:80,000-scale aerial photograph taken October 27, 1975
Projection: Maine coordinate system, east zone (transverse Mercator)
10,000-foot grid ticks based on Maine coordinate system, east and west zones
1000-meter Universal Transverse Mercator grid, zone 19, 1927 North American datum
Photomicroscopy rectified by optical scanning which may produce double or mismatched images; use the mean of image positions for map point



PRINCIPAL NUMBERED HIGHWAYS
Interstate Route U. S. Route State Route



This quadrangle area also covered by NW quarter of Burnham 1:62,500-scale topographic map

USGS
Historical File
Topographic Division

BURNHAM NW, MAINE
N4437.5-W6922.5/7.5

1975

DMA 7173 III NW-SERIES V011

THIS MAP COMPLIES WITH NATIONAL MAP ACCURACY STANDARDS
FOR SALE BY U. S. GEOLOGICAL SURVEY, RESTON, VIRGINIA 22092

AUG - 8 1980

1700