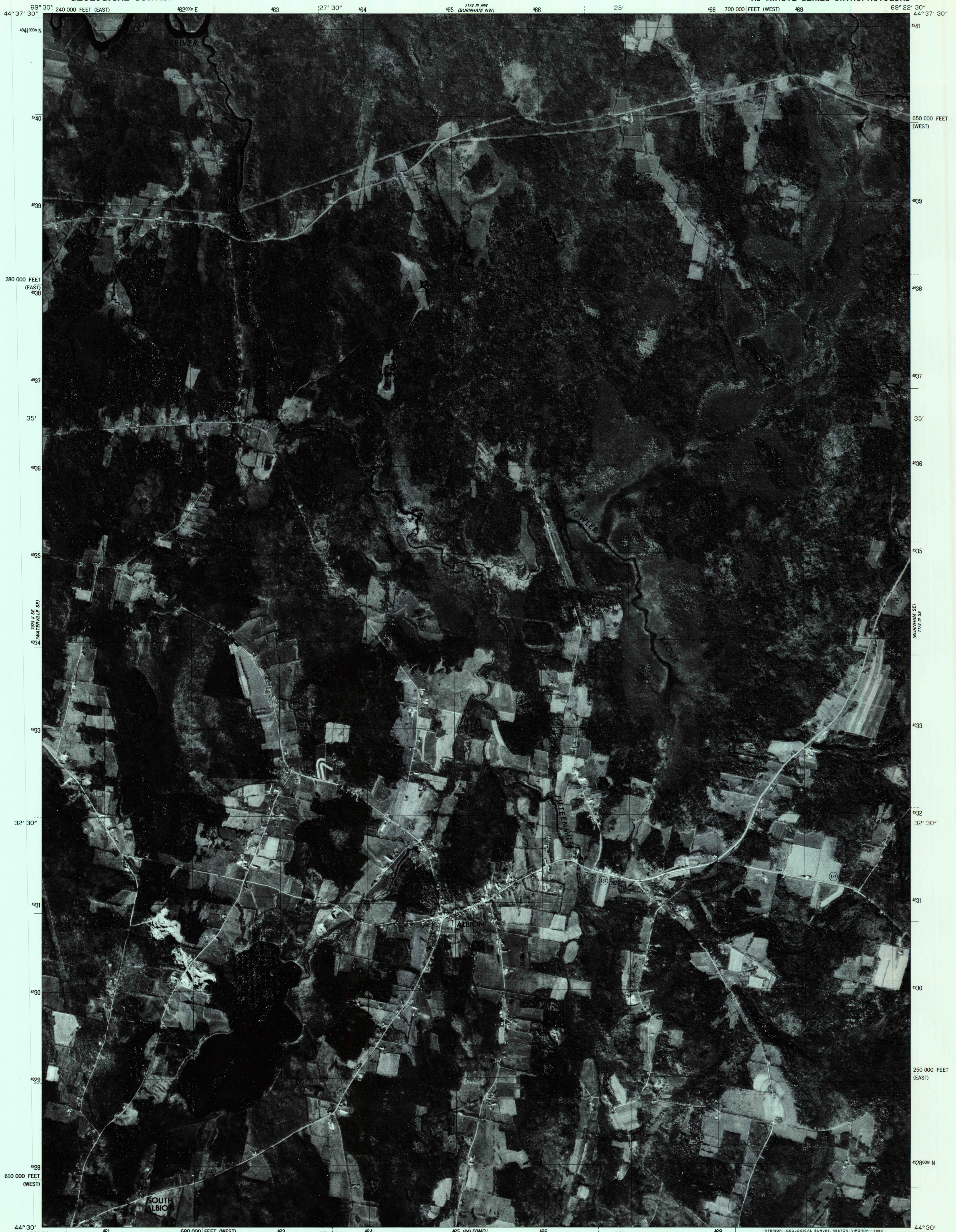


UNITED STATES
DEPARTMENT OF THE INTERIOR
GEOLOGICAL SURVEY

BURNHAM SW QUADRANGLE
MAINE
7.5 MINUTE SERIES ORTHOPHOTOQUAD



Produced and published by the Geological Survey

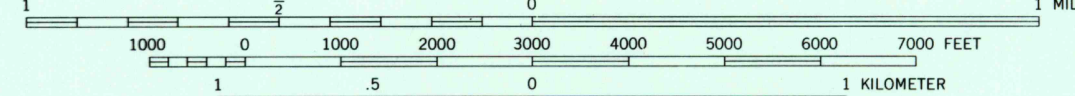
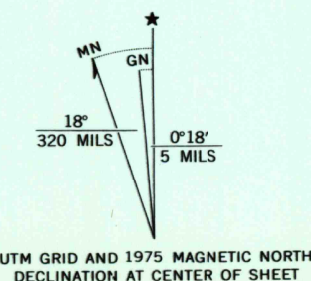
Orthophoto prepared from 1:80,000-scale aerial photograph taken October 27, 1975

Projection: Maine coordinate system, west zone (transverse Mercator)

10,000-foot grid ticks based on Maine coordinate system, west and east zones

1000-meter Universal Transverse Mercator grid, zone 19, 1927 North American datum

Photomaps rectified by optical scanning which may produce double or mismatched images; use the mean of image positions for map point



PRINCIPAL NUMBERED HIGHWAYS

Interstate Route U. S. Route State Route



This quadrangle area also covered by SW quarter of Burnham 1:62,500-scale topographic map

AUG 11 1980

1700

BURNHAM SW, MAINE
N4430-W6922.5/7.5

1975

DMA 7173 III SW-SERIES V011

THIS MAP COMPLIES WITH NATIONAL MAP ACCURACY STANDARDS
FOR SALE BY U. S. GEOLOGICAL SURVEY, RESTON, VIRGINIA 22092