

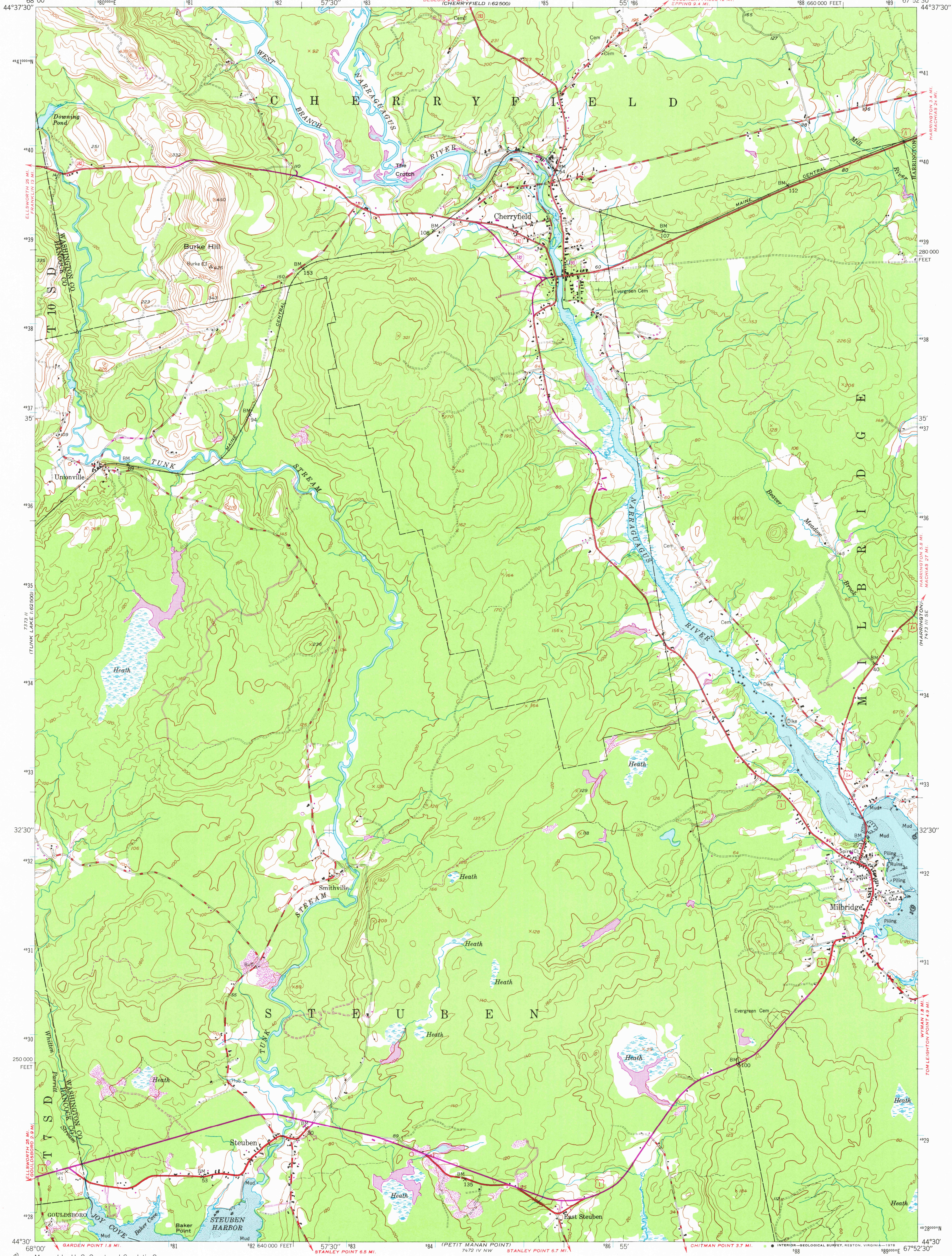
7323 I
BAR
1:62,500

UNITED STATES
DEPARTMENT OF THE INTERIOR
GEOLOGICAL SURVEY

UNITED STATES
DEPARTMENT OF COMMERCE
COAST AND GEODETIC SURVEY

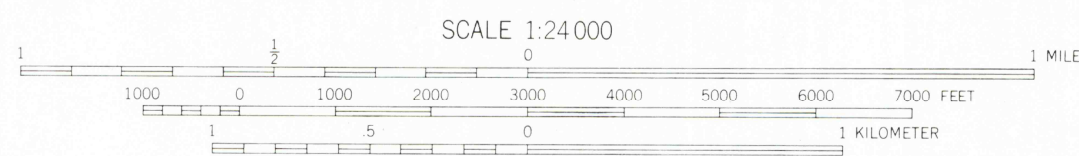
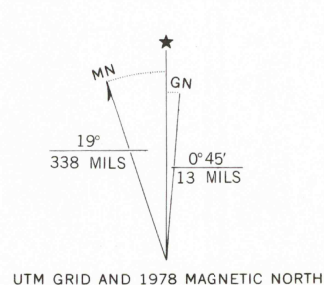
CHERRYFIELD QUADRANGLE
MAINE
7.5 MINUTE SERIES (TOPOGRAPHIC)
SW/4 CHERRYFIELD 15' QUADRANGLE

7323 II
CHERRYFIELD
1:62,500



7323 I
BAR
1:62,500

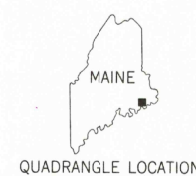
Mapped by U. S. Coast and Geodetic Survey
Edited and published by the Geological Survey
Control by USGS and USC&GS (C)
Topography by plane-table surveys and
from aerial photographs by multiplex methods
Aerial photographs taken 1944 and 1946. Field check 1948
Polyconic projection. 1927 North American datum
10,000-foot grid based on Maine coordinate system,
east zone
No distinction is made between dwellings, barns,
commercial and industrial buildings
Unchecked elevations are shown in brown
1000-meter Universal Transverse Mercator grid ticks,
zone 19, shown in blue



CONTOUR INTERVAL 20 FEET
NATIONAL GEODETIC VERTICAL DATUM OF 1929
SHORELINE SHOWN REPRESENTS THE APPROXIMATE LINE OF MEAN HIGH WATER
THE AVERAGE RANGE OF TIDE IS APPROXIMATELY 11 FEET

THIS MAP COMPLIES WITH NATIONAL MAP ACCURACY STANDARDS
FOR SALE BY U. S. GEOLOGICAL SURVEY, RESTON, VIRGINIA 22092
A FOLDER DESCRIBING TOPOGRAPHIC MAPS AND SYMBOLS IS AVAILABLE ON REQUEST

Revisions shown in purple compiled by Geological Survey
from aerial photographs taken 1975. This information
not field checked. Map edited 1978



ROAD CLASSIFICATION
HARD-SURFACE ALL WEATHER ROADS DRY WEATHER ROADS
Heavy-duty ——— +LANE 3 LANE Improved dirt ———
Medium-duty ——— +LANE 2 LANE Unimproved dirt ———
Loose-surface, graded, or narrow hard-surface ———
U. S. Route State Route

CHERRYFIELD, ME.
SW/4 CHERRYFIELD 15' QUADRANGLE
N4430—W6752.5/7.5

1948
PHOTOREVISED 1978
AMS 7473 III SW—SERIES V811

7323 II
CHERRYFIELD
1:62,500