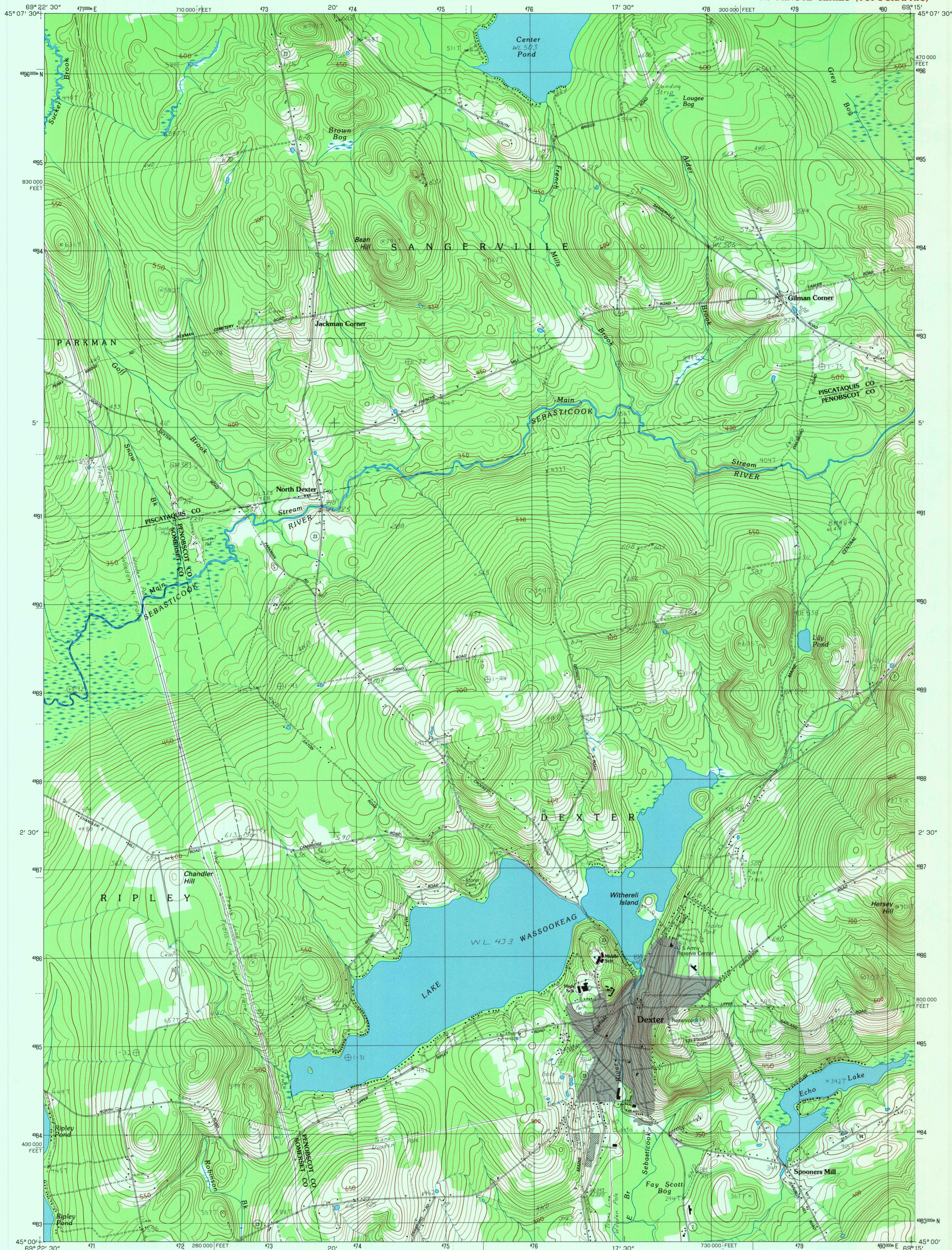


UNITED STATES
DEPARTMENT OF THE INTERIOR
GEOLOGICAL SURVEY

DEXTER QUADRANGLE
MAINE
7.5 MINUTE SERIES (TOPOGRAPHIC)



PRODUCED BY THE UNITED STATES GEOLOGICAL SURVEY
CONTROL BY USGS AND NOS/NOAA
COMPILED FROM AERIAL PHOTOGRAPHS TAKEN 1980
FIELD CHECKED 1981. MAP EDITED 1984
PROJECTION TRANSVERSE MERCATOR
GRID 1000-METER UNIVERSAL TRANSVERSE MERCATOR
1000-FOOT STATE GRID TICS MAINE EAST ZONE
UTM GRID DECLINATION 18°30' WEST
1984 MAGNETIC NORTH DECLINATION 18°30' WEST
VERTICAL DATUM NATIONAL GEODETIC VERTICAL DATUM OF 1929
HORIZONTAL DATUM 1927 NORTH AMERICAN DATUM
To place on the predicted North American Datum of 1983, move
the projection lines as shown by dashed corner ticks (3 meters
south and 43 meters west)
There may be private inholdings within the boundaries of any
National or State reservations shown on this map

PROVISIONAL MAP
Produced from original
manuscript drawings. Infor-
mation shown as of date of
field check

SCALE 1:24 000
1 000 0 1000 2000 3000 4000 5000 6000 7000 8000 9000 10 000
KILOMETERS
METERS
MILES
FEET
CONTOUR INTERVAL 10 FEET
To convert meters to feet multiply by 3.2808
To convert feet to meters multiply by .3048
THIS MAP COMPLIES WITH NATIONAL MAP ACCURACY STANDARDS
FOR SALE BY U. S. GEOLOGICAL SURVEY, RESTON, VIRGINIA 22092

1	2	3	1	Gulfport
4	5	6	2	Sangerville
7	8	9	3	Dover-Foxcroft
			4	Cambridge
			5	Garland
			6	Harland
			7	Cortina
			8	Stetson

ADJOINING 7.5' QUADRANGLE NAMES

ROAD LEGEND
Improved Road
Unimproved Road
Trail
Interstate Route
U. S. Route
State Route
DEXTER, MAINE
PROVISIONAL EDITION 1984
45069-A3-TF-024

