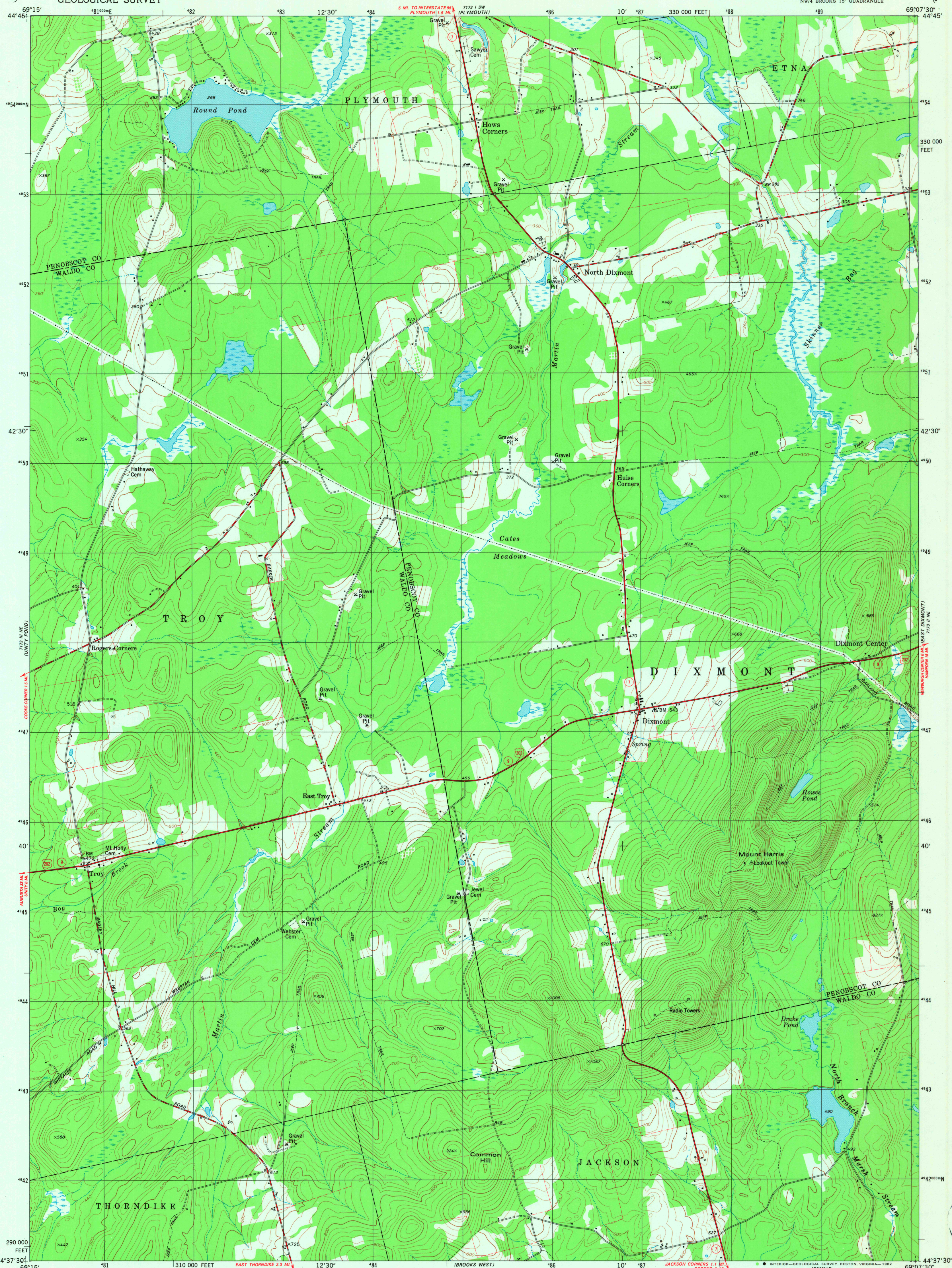


UNITED STATES
DEPARTMENT OF THE INTERIOR
GEOLOGICAL SURVEY

DIXMONT QUADRANGLE
MAINE
7.5 MINUTE SERIES (TOPOGRAPHIC)
NW/4 BROOKS 15' QUADRANGLE



Mapped, edited, and published by the Geological Survey

Control by USGS and NOS/NOAA

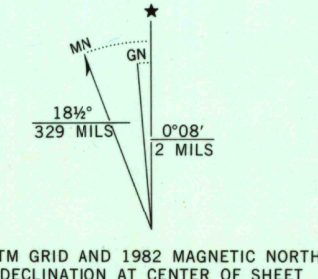
Topography by photogrammetric methods from aerial photographs taken 1976. Field checked 1979. Map edited 1982

Projection and 10,000-foot grid ticks: Maine coordinate system, east zone (transverse Mercator)

1000-meter Universal Transverse Mercator grid, zone 19 1927 North American Datum

To place on the predicted North American Datum 1983 move the projection lines 3 meters south and 43 meters west as shown by dashed corner ticks

Fine red dashed lines indicate selected fence and field lines where generally visible on aerial photographs. This information is unchecked



SCALE 1:24 000
CONTOUR INTERVAL 20 FEET
NATIONAL GEODETIC VERTICAL DATUM OF 1929

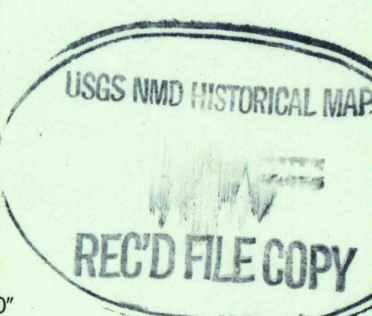


ROAD CLASSIFICATION
Primary highway, hard surface
Secondary highway, hard surface
Unimproved road
Light-duty road, hard or improved surface
Unimproved road
Interstate Route
U. S. Route
State Route

DIXMONT, MAINE
NW/4 BROOKS 15' QUADRANGLE
N4437.5-W6907.5/7.5

1982

DMA 7173 II NW-SERIES V811



JUL 1983

2150