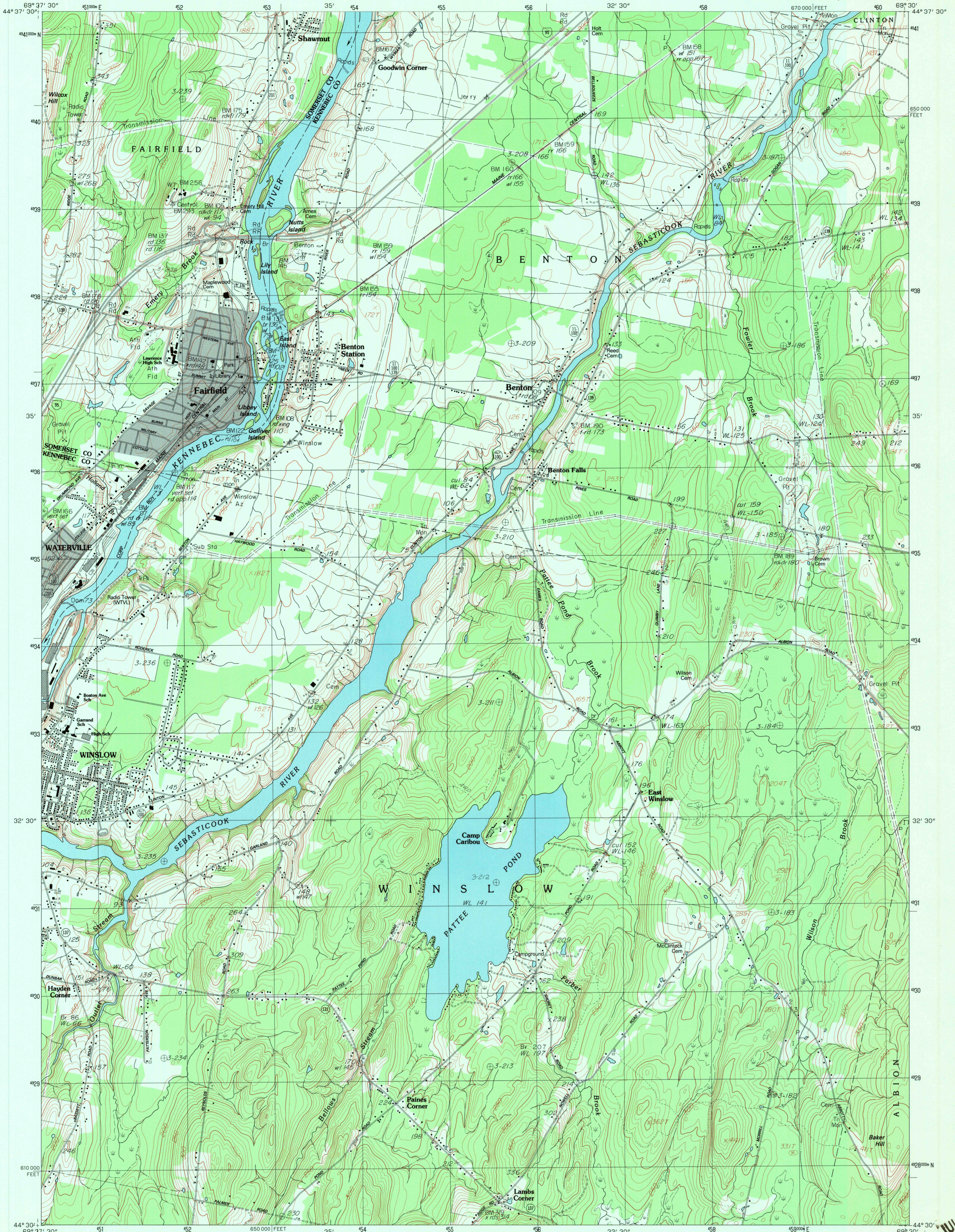


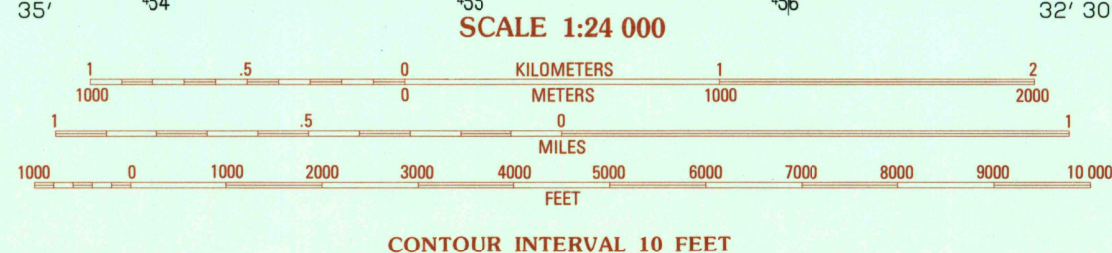
UNITED STATES
DEPARTMENT OF THE INTERIOR
GEOLOGICAL SURVEY

FAIRFIELD QUADRANGLE
MAINE
7.5 MINUTE SERIES (TOPOGRAPHIC)



PRODUCED BY THE UNITED STATES GEOLOGICAL SURVEY
CONTROL BY USGS, NOS/NOAA, AND MAINE DEPT. OF TRANSP.
COMPILED FROM AERIAL PHOTOGRAPHS TAKEN 1976
FIELD CHECKED 1979 MAP EDITED 1982
PROJECTION TRANSVERSE MERCATOR
GRID: 1000-METER UNIVERSAL TRANSVERSE MERCATOR ZONE 19
10,000-FOOT STATE GRID TICS MAINE, WEST ZONE
UTM GRID DECLINATION 0°24' WEST
1982 MAGNETIC NORTH DECLINATION 18° WEST
VERTICAL DATUM NATIONAL GEODETIC VERTICAL DATUM OF 1929
HORIZONTAL DATUM 1927 NORTH AMERICAN DATUM
To place on the predicted North American Datum of 1983, move
the projection lines as shown by dashed corner ticks
(3 meters south and 42 meters west)
There may be private inholdings within the boundaries of any
Federal and State Reservations shown on this map
Gray tint indicates area in which selected buildings are shown

PROVISIONAL MAP
Produced from original
manuscript drawings. Infor-
mation shown as of date of
field check



THIS MAP COMPLIES WITH NATIONAL MAP ACCURACY STANDARDS
FOR SALE BY U. S. GEOLOGICAL SURVEY, RESTON, VIRGINIA 22092

QUADRANGLE LOCATION

1	2	3	1	Hickley
2	3	4	2	Clinton
3	4	5	3	Burnham
4	5	6	4	Waterville
5	6	7	5	Albion
6	7	8	6	Vassalboro
			7	China Lake
			8	Palermo

ADJOINING 7.5' QUADRANGLE NAMES

ROAD LEGEND

Improved Road
Unimproved Road
Trail

Interstate Route U. S. Route State Route

FAIRFIELD, MAINE
PROVISIONAL EDITION 1982

44069-E5-TF-024

JUL 12 1983

USGS NMD HISTORICAL MAP
REC'D FILE COPY