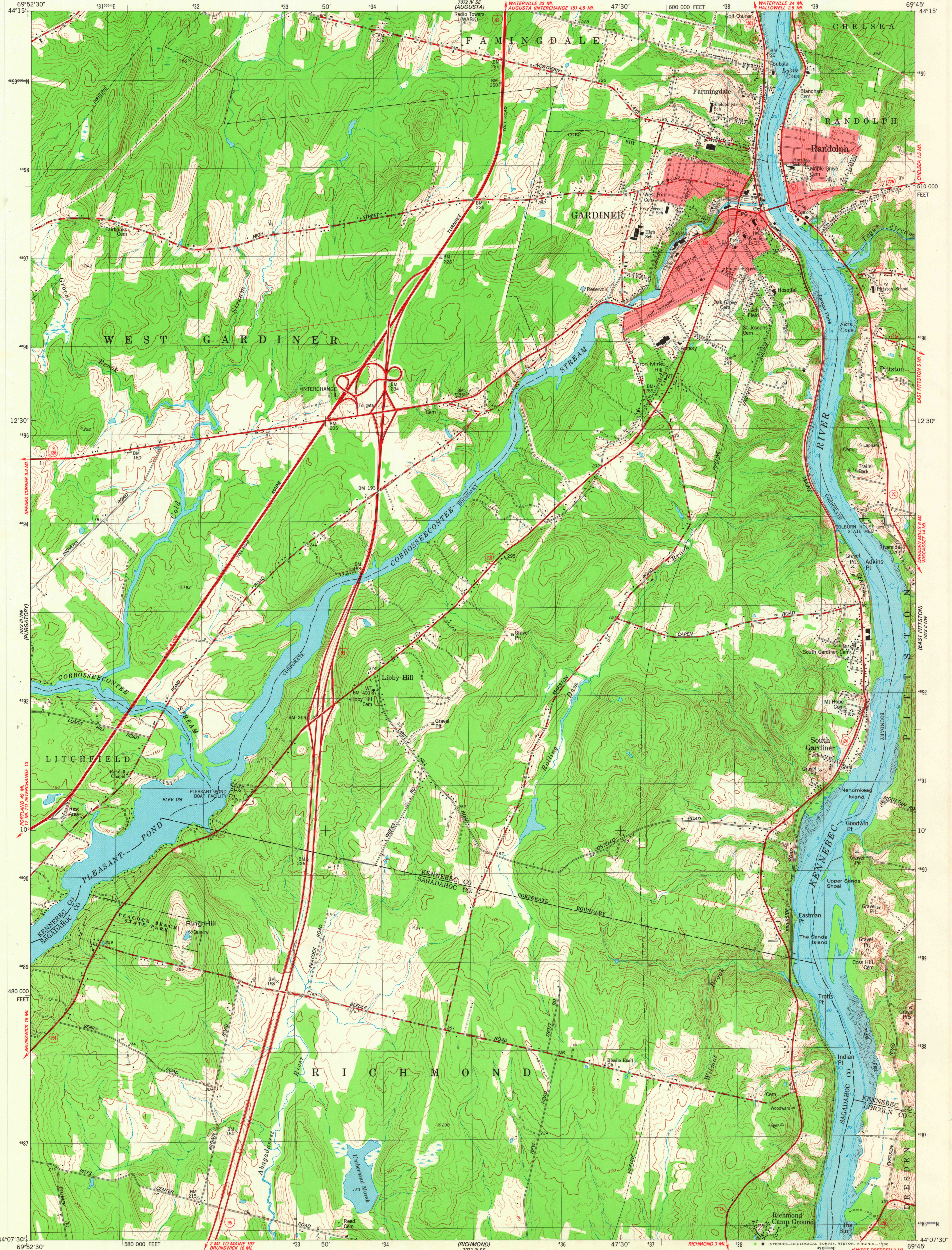
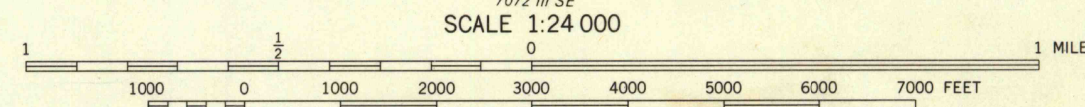
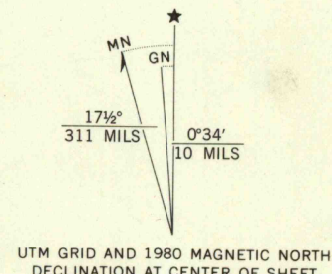


UNITED STATES
DEPARTMENT OF THE INTERIOR
GEOLOGICAL SURVEY

GARDINER QUADRANGLE
MAINE
7.5 MINUTE SERIES (TOPOGRAPHIC)

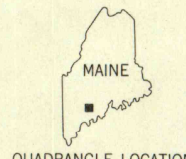


Mapped, edited, and published by the Geological Survey
Control by USGS, NOS/NOAA, MDOT, and Maine Geodetic Survey
Topography by photogrammetric methods from aerial photographs
taken 1973. Field checked 1974. Map edited 1980
Selected hydrographic data compiled from NOS chart 13298 (1978)
This information is not intended for navigational purposes
Projection and 10,000-foot grid ticks: Maine coordinate
system, west zone (transverse Mercator)
1000-meter Universal Transverse Mercator grid, zone 19
1927 North American Datum
To place on the predicted North American Datum 1983
move the projection lines 4 meters south and
42 meters west as shown by dashed corner ticks
Fine red dashed lines indicate selected fence and field lines where
generally visible on aerial photographs. This information is unchecked
Red tint indicates areas in which only landmark buildings are shown
There may be private inholdings within the boundaries of
the National or State reservations shown on this map



CONTOUR INTERVAL 10 FEET
NATIONAL GEODETIC VERTICAL DATUM OF 1929
DEPTH CURVES AND SOUNDINGS IN FEET—DATUM IS MEAN LOW WATER
THE RELATIONSHIP BETWEEN THE TWO DATUMS IS VARIABLE
SHORELINE SHOWN REPRESENTS THE APPROXIMATE LINE OF MEAN HIGH WATER
THE MEAN RANGE OF TIDE IS APPROXIMATELY 5 FEET

THIS MAP COMPLIES WITH NATIONAL MAP ACCURACY STANDARDS
FOR SALE BY U. S. GEOLOGICAL SURVEY, RESTON, VIRGINIA 22092
A FOLDER DESCRIBING TOPOGRAPHIC MAPS AND SYMBOLS IS AVAILABLE ON REQUEST



QUADRANGLE LOCATION

ROAD CLASSIFICATION
Primary highway, hard surface
Secondary highway, hard surface
Unimproved road
Light-duty road, hard or improved surface
Interstate Route
U. S. Route
State Route

GARDINER, MAINE
NE/4 GARDINER 15' QUADRANGLE
N4407.5-W6945.7.5

1980

DMA 7072 III NE-SERIES V811

DEC 29 1980

1950