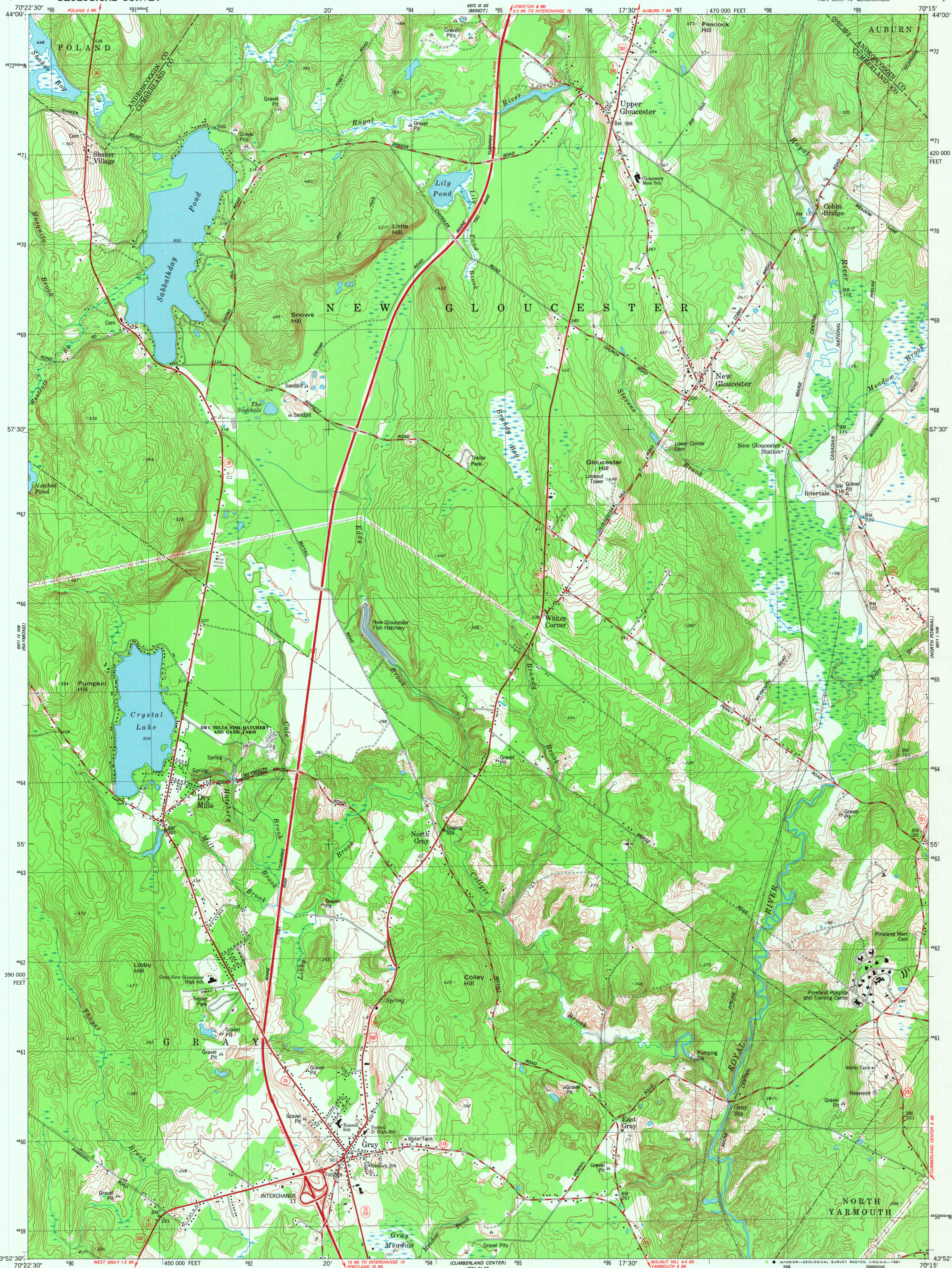
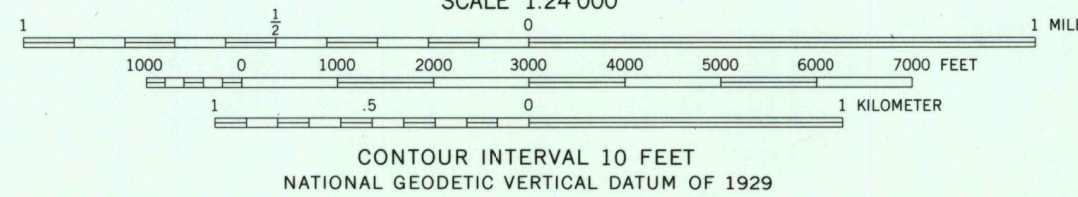
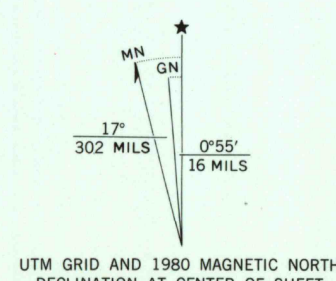


UNITED STATES  
DEPARTMENT OF THE INTERIOR  
GEOLOGICAL SURVEY

GRAY QUADRANGLE  
MAINE  
7.5 MINUTE SERIES (TOPOGRAPHIC)



Mapped, edited, and published by the Geological Survey  
Control by USGS and NOS/NOAA  
Topography by photogrammetric methods from aerial photographs  
taken 1973. Field checked 1975. Map edited 1980  
Projection and 10,000-foot grid ticks: Maine coordinate  
system, west zone (transverse Mercator)  
1000-meter Universal Transverse Mercator grid, zone 19  
1927 North American Datum  
To place on the predicted North American Datum 1983  
move the projection lines 4 meters south and  
41 meters west as shown by dashed corner ticks  
Fine red dashed lines indicate selected fence and field lines where  
generally visible on aerial photographs. This information is unchecked  
There may be private inholdings within the boundaries of  
the National or State reservations shown on this map



THIS MAP COMPLIES WITH NATIONAL MAP ACCURACY STANDARDS  
FOR SALE BY U. S. GEOLOGICAL SURVEY, RESTON, VIRGINIA 22092  
A FOLDER DESCRIBING TOPOGRAPHIC MAPS AND SYMBOLS IS AVAILABLE ON REQUEST



ROAD CLASSIFICATION  
Primary highway, hard surface  
Secondary highway, hard surface  
Interstate Route  
U. S. Route  
State Route  
Light-duty road, hard or improved surface  
Unimproved road

GRAY, MAINE  
NE/4 GRAY 15' QUADRANGLE  
N4352.5-W7015/7.5  
1980

DMA 6971 IV NE-SERIES V811

USGS File  
Historical Mapping Div.

MAR 27 1981  
2250