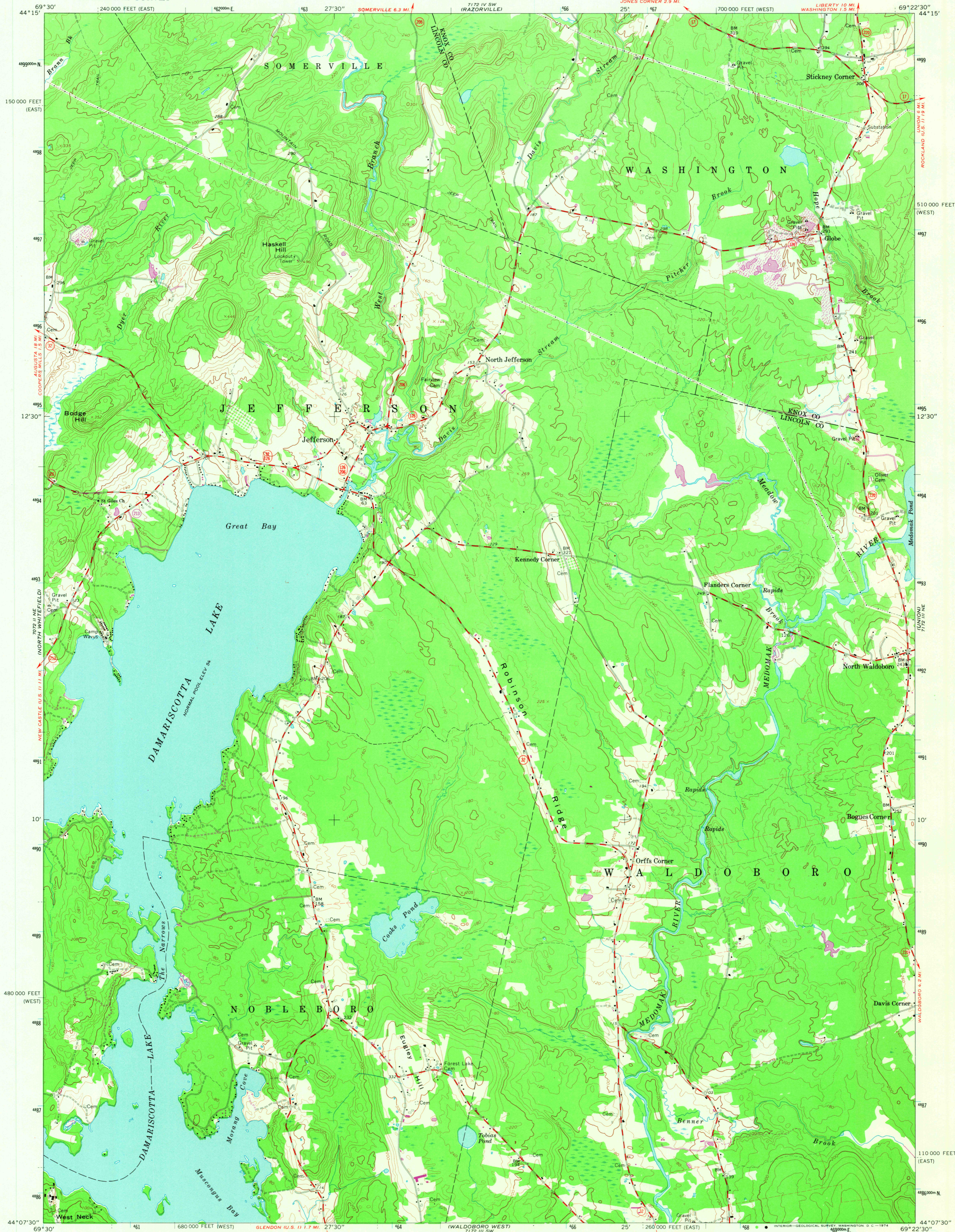


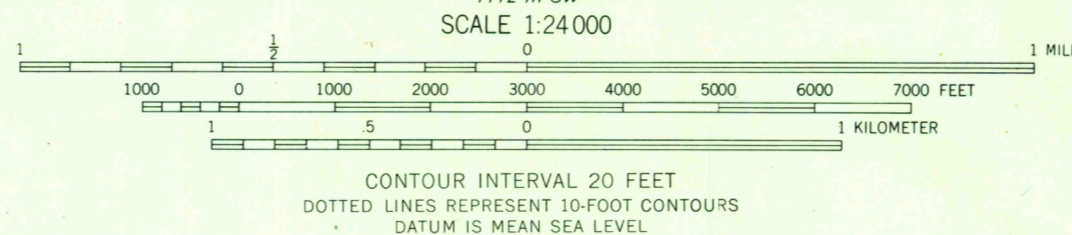
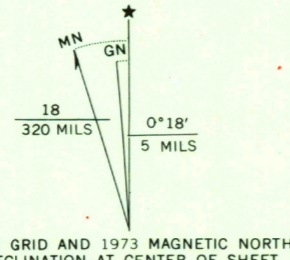
UNITED STATES
DEPARTMENT OF THE INTERIOR
GEOLOGICAL SURVEY

STATE OF MAINE
PUBLIC UTILITIES COMMISSION

JEFFERSON QUADRANGLE
MAINE
7.5 MINUTE SERIES (TOPOGRAPHIC)



Mapped, edited, and published by the Geological Survey
Control by USGS and USC&GS
Topography by photogrammetric methods from aerial
photographs taken 1962. Field checked 1965
Polyconic projection, 1927 North American datum
10,000-foot grids based on Maine coordinate system, west and
east zones
1000-meter Universal Transverse Mercator grid ticks,
zone 19, shown in blue
Fine red dashed lines indicate selected fence and field lines where
generally visible on aerial photographs. This information is unchecked
Revisions shown in purple compiled from aerial photographs
taken 1973. This information not field checked



CONTOUR INTERVAL 20 FEET
DOTTED LINES REPRESENT 10-FOOT CONTOURS
DATUM IS MEAN SEA LEVEL



USGS
Historical File
Topographic Division

ROAD CLASSIFICATION
Medium-duty — Light-duty
Unimproved dirt
State Route

JEFFERSON, MAINE

N4407.5—W6922.5/7.5
1965
PHOTOREVISED 1973
AMS 7172 III NW—SERIES V811

THIS MAP COMPLIES WITH NATIONAL MAP ACCURACY STANDARDS
FOR SALE BY U.S. GEOLOGICAL SURVEY, WASHINGTON, D.C. 20242
A FOLDER DESCRIBING TOPOGRAPHIC MAPS AND SYMBOLS IS AVAILABLE ON REQUEST

3850