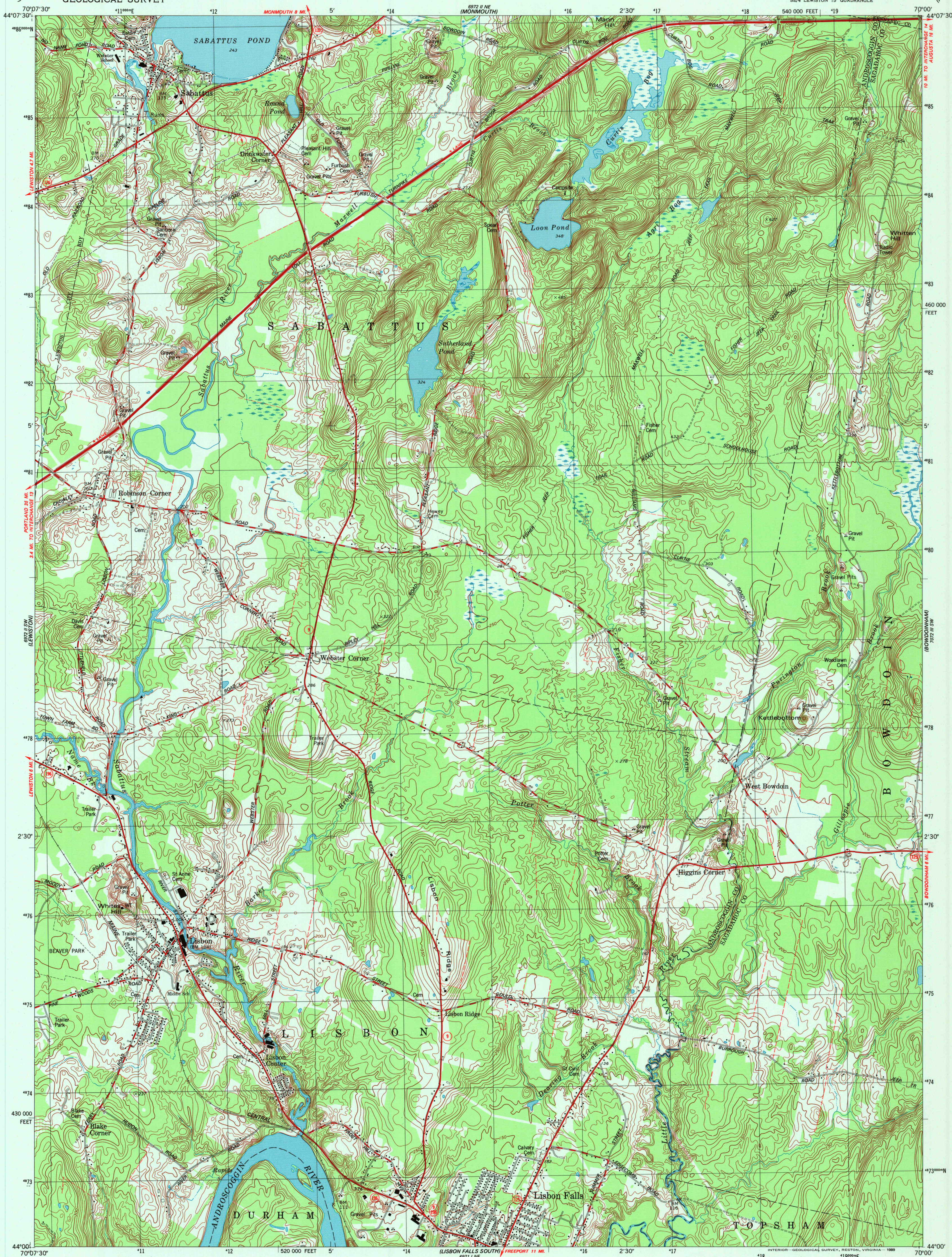


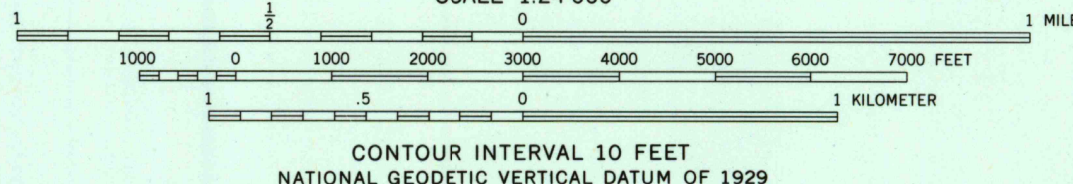
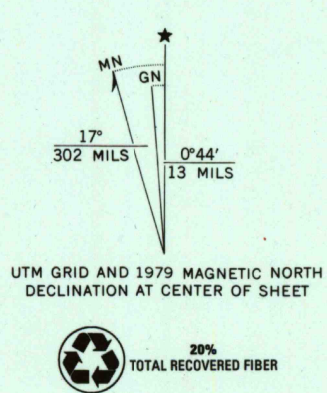
UNITED STATES
DEPARTMENT OF THE INTERIOR
GEOLOGICAL SURVEY

LISBON FALLS NORTH QUADRANGLE
MAINE

7.5 MINUTE SERIES (TOPOGRAPHIC)
SE/4 LEWISTON 15' QUADRANGLE



Mapped, edited, and published by the Geological Survey
Control by USGS, NOS/NOAA and Maine Geodetic Survey
Topography by photogrammetric methods from aerial photographs
taken 1973. Field checked 1975. Map edited 1979
Projection and 10,000-foot grid ticks: Maine coordinate
system, west zone (transverse Mercator)
1000-meter Universal Transverse Mercator grid, zone 19
1927 North American datum
To place on the predicted North American Datum 1983
move the projection lines 4 meters south and
42 meters west as shown by dashed corner ticks
Fine red dashed lines indicate selected fence and field lines where
generally visible on aerial photographs. This information is unchecked



ROAD CLASSIFICATION
Primary highway, hard surface ————
Secondary highway, hard surface ————
Unimproved road ————
Interstate Route ————
U.S. Route ————
State Route ————



LISBON FALLS NORTH, MAINE
SE/4 LEWISTON 15' QUADRANGLE
44070-A1-TF-024

1979

DMA 6972 II SE—SERIES V811

THIS MAP COMPLIES WITH NATIONAL MAP ACCURACY STANDARDS
FOR SALE BY U.S. GEOLOGICAL SURVEY
DENVER, COLORADO 80225, OR RESTON, VIRGINIA 22092
A FOLDER DESCRIBING TOPOGRAPHIC MAPS AND SYMBOLS IS AVAILABLE ON REQUEST

RECEIVED
SEP 30 2000

USGS AND
HISTORICAL MAP ARCHIVES

