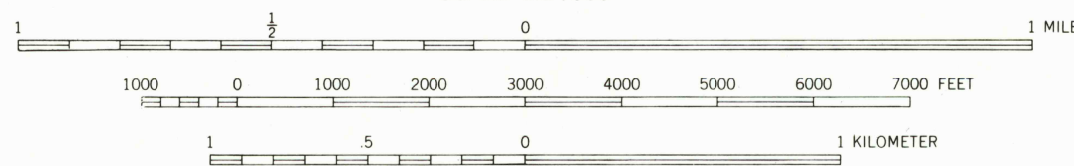
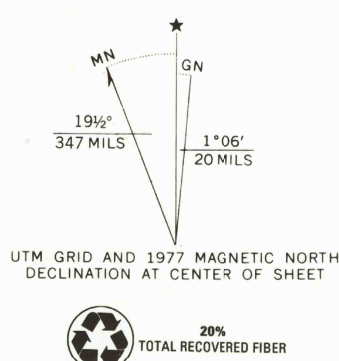


Mapped by the U. S. Coast & Geodetic Survey
Edited and published by the Geological Survey
Control by USC&GS, USGS, and MIT
Topography from aerial photographs by multiplex methods
Aerial photographs taken 1944 and 1946. Field check 1949
Hydrography from surveys dated 1885 and 1916
Polyconic projection. 1927 North American datum
10,000-foot grid based on Maine coordinate system,
east zone
Unchecked elevations are shown in brown
1000-meter Universal Transverse Mercator grid ticks,
zone 19, shown in blue
Revisions shown in purple compiled by Geological Survey from aerial
photographs taken 1975. This information not field checked. Map edited 1977



CONTOUR INTERVAL 20 FEET
NATIONAL GEODETIC VERTICAL DATUM OF 1929
DEPTH CURVES AND SOUNDINGS IN FEET—DATUM IS MEAN LOW WATER
SHORELINE SHOWN REPRESENTS THE APPROXIMATE LINE OF MEAN HIGH WATER
THE AVERAGE RANGE OF TIDE IS APPROXIMATELY 13 FEET
THIS MAP COMPLIES WITH NATIONAL MAP ACCURACY STANDARDS
FOR SALE BY U. S. GEOLOGICAL SURVEY
DENVER, COLORADO 80225, OR RESTON, VIRGINIA 22092
A FOLDER DESCRIBING TOPOGRAPHIC MAPS AND SYMBOLS IS AVAILABLE ON REQUEST

To place on the predicted North American Datum 1983,
move the projection lines
49 meters west as shown by dashed corner ticks

ROAD CLASSIFICATION
Heavy-duty ——— Light-duty ———
Medium-duty ——— Unimproved dirt ———
U. S. Route ——— State Route ———

MACHIAS, ME.
NW/4 MACHIAS 15' QUADRANGLE
44067-F4-TF-024
PHOTOREVISED 1977
1949

DMA 7573 III NW—SERIES V811

