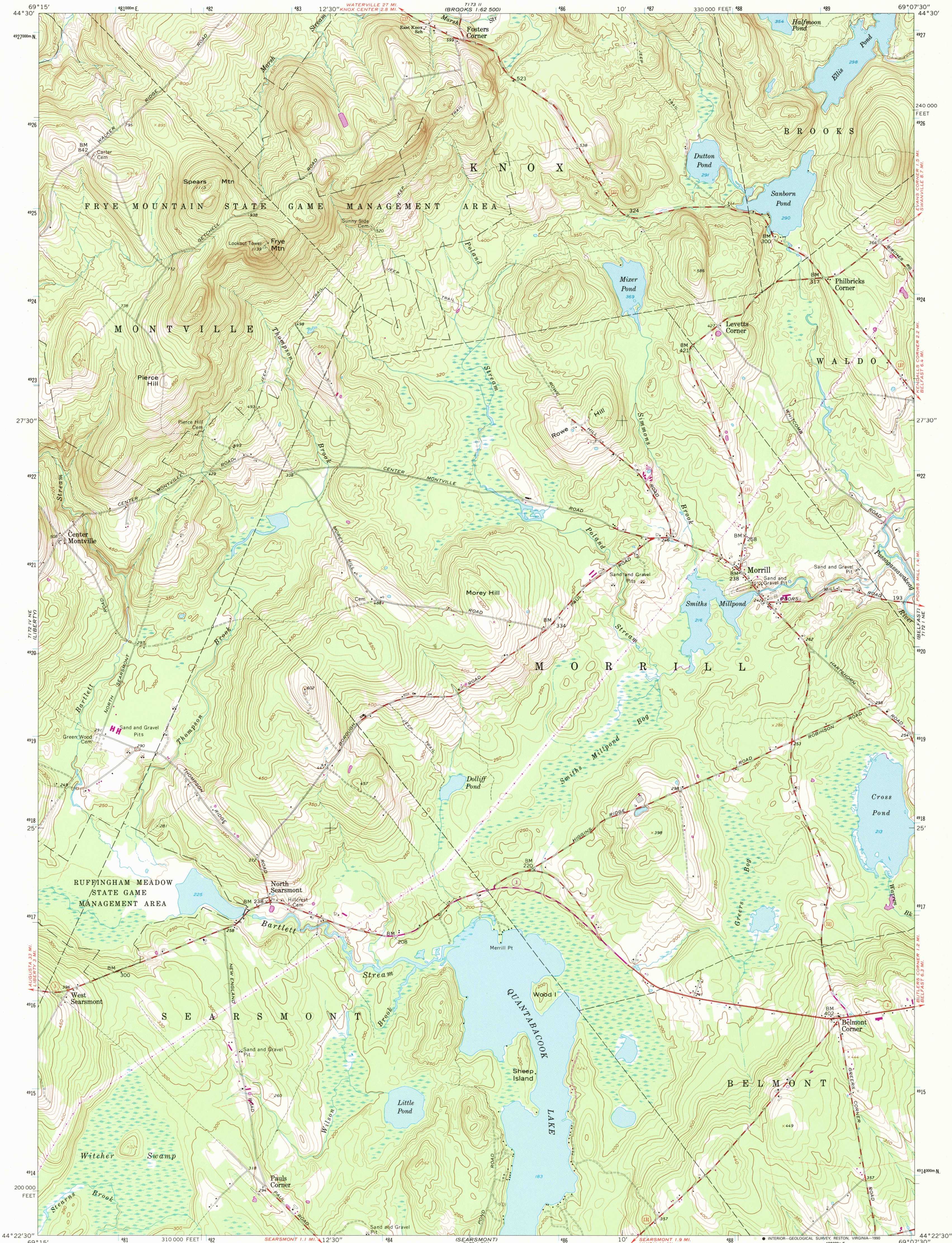


UNITED STATES
DEPARTMENT OF THE INTERIOR
GEOLOGICAL SURVEY

MORRILL QUADRANGLE
MAINE—WALDO CO.
7.5 MINUTE SERIES (TOPOGRAPHIC)



Mapped, edited, and published by the Geological Survey
Control by USGS and USC&GS

Topography from aerial photographs by photogrammetric methods
Aerial photographs taken 1956. Field check 1960

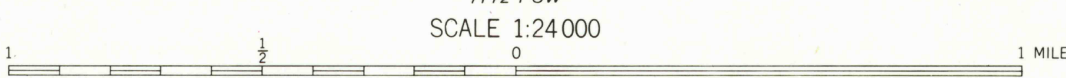
Polyconic projection. 1927 North American datum
10,000-foot grid based on Maine coordinate system, east zone
1000-meter Universal Transverse Mercator grid ticks,
zone 19, shown in blue

Fine red dashed lines indicate selected fence and field lines where
generally visible on aerial photographs. This information is unchecked

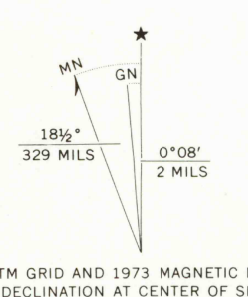
Revisions shown in purple compiled from aerial photographs
taken 1973. This information not field checked

Map photorevised 1979

No major culture or drainage changes observed



CONTOUR INTERVAL 10 FEET
DATUM IS MEAN SEA LEVEL



THIS MAP COMPLIES WITH NATIONAL MAP ACCURACY STANDARDS
FOR SALE BY U.S. GEOLOGICAL SURVEY
DENVER, COLORADO 80225, OR RESTON, VIRGINIA 22092
A FOLDER DESCRIBING TOPOGRAPHIC MAPS AND SYMBOLS IS AVAILABLE ON REQUEST

ROAD CLASSIFICATION
Heavy-duty ——— Light-duty ———
Medium-duty ——— Unimproved dirt ———
State Route ———



MORRILL, MAINE

N4422.5—W6907.5/7.5
PHOTOINSPECTED 1979
1960
PHOTOREVISED 1973
AMS 7172 I NW—SERIES V811