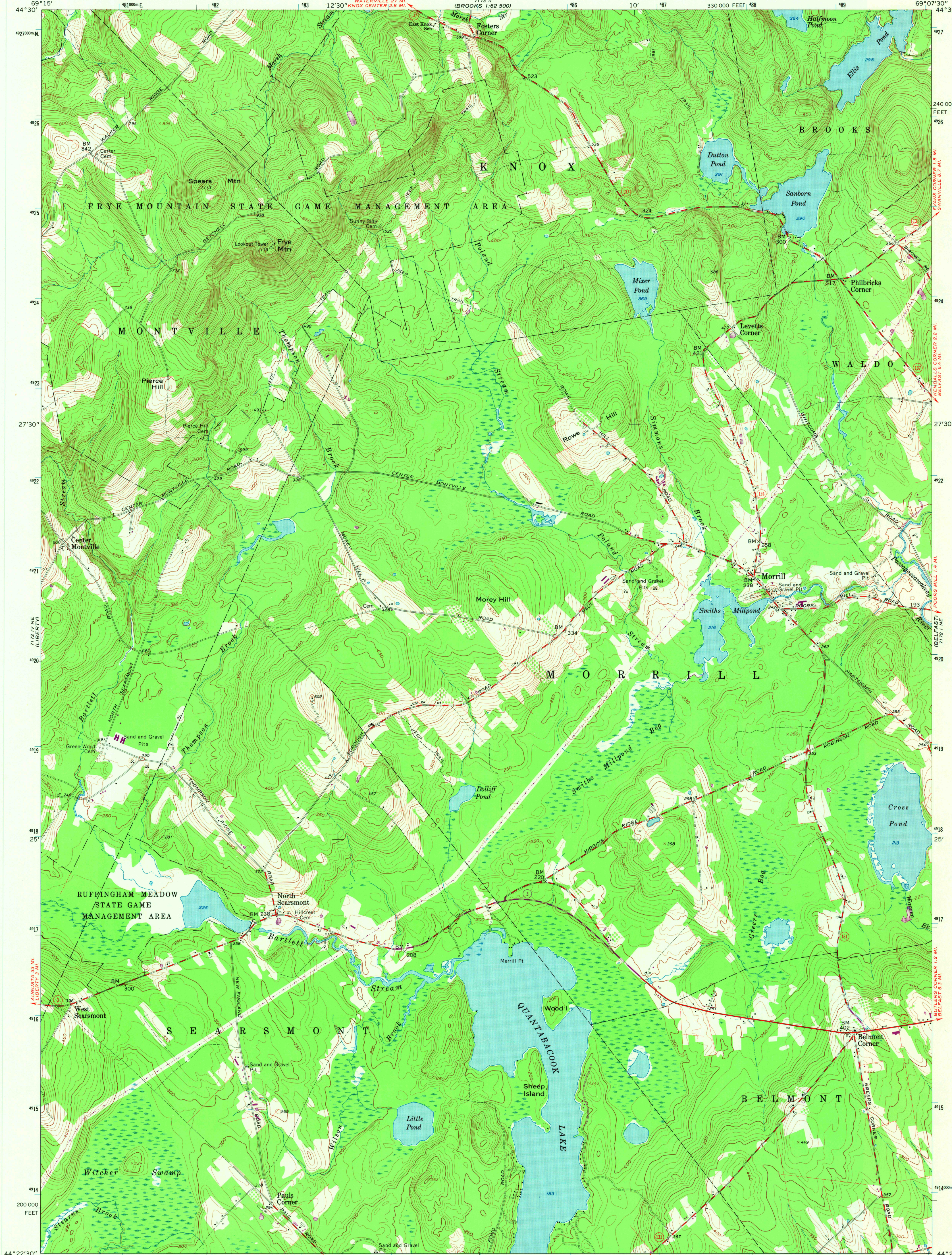
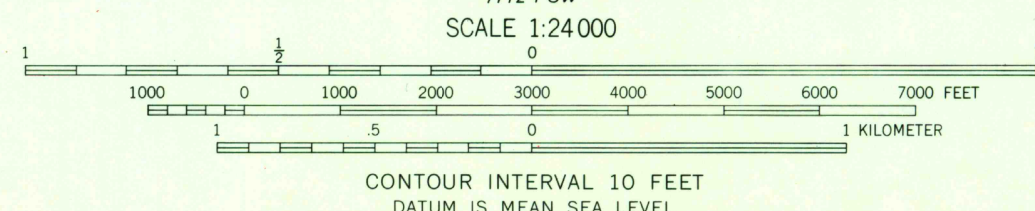
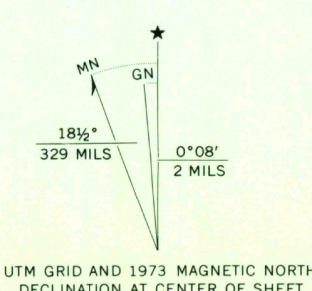


UNITED STATES  
DEPARTMENT OF THE INTERIOR  
GEOLOGICAL SURVEY

MORRILL QUADRANGLE  
MAINE-WALDO CO.  
7.5 MINUTE SERIES (TOPOGRAPHIC)



Mapped, edited, and published by the Geological Survey  
Control by USGS and USC&GS  
Topography from aerial photographs by photogrammetric methods  
Aerial photographs taken 1956. Field check 1960  
Polyconic projection, 1927 North American datum  
10,000-foot grid based on Maine coordinate system, east zone  
1000-meter Universal Transverse Mercator grid ticks,  
zone 19, shown in blue  
Fine red dashed lines indicate selected fence and field lines where  
generally visible on aerial photographs. This information is unchecked  
Revisions shown in purple compiled from aerial photographs  
taken 1973. This information not field checked



ROAD CLASSIFICATION	
Heavy-duty	Light-duty
Medium-duty	Unimproved dirt
State Route	

USGS  
Historical File  
Topographic Division

MORRILL, MAINE  
N4422.5-W6907.5/7.5  
1960  
PHOTOGRAPHED 1973  
AMS 7172 1 NW-SERIES V811

JUL 11 1974

3500  
Pride mark  
LINCOLNVILLE