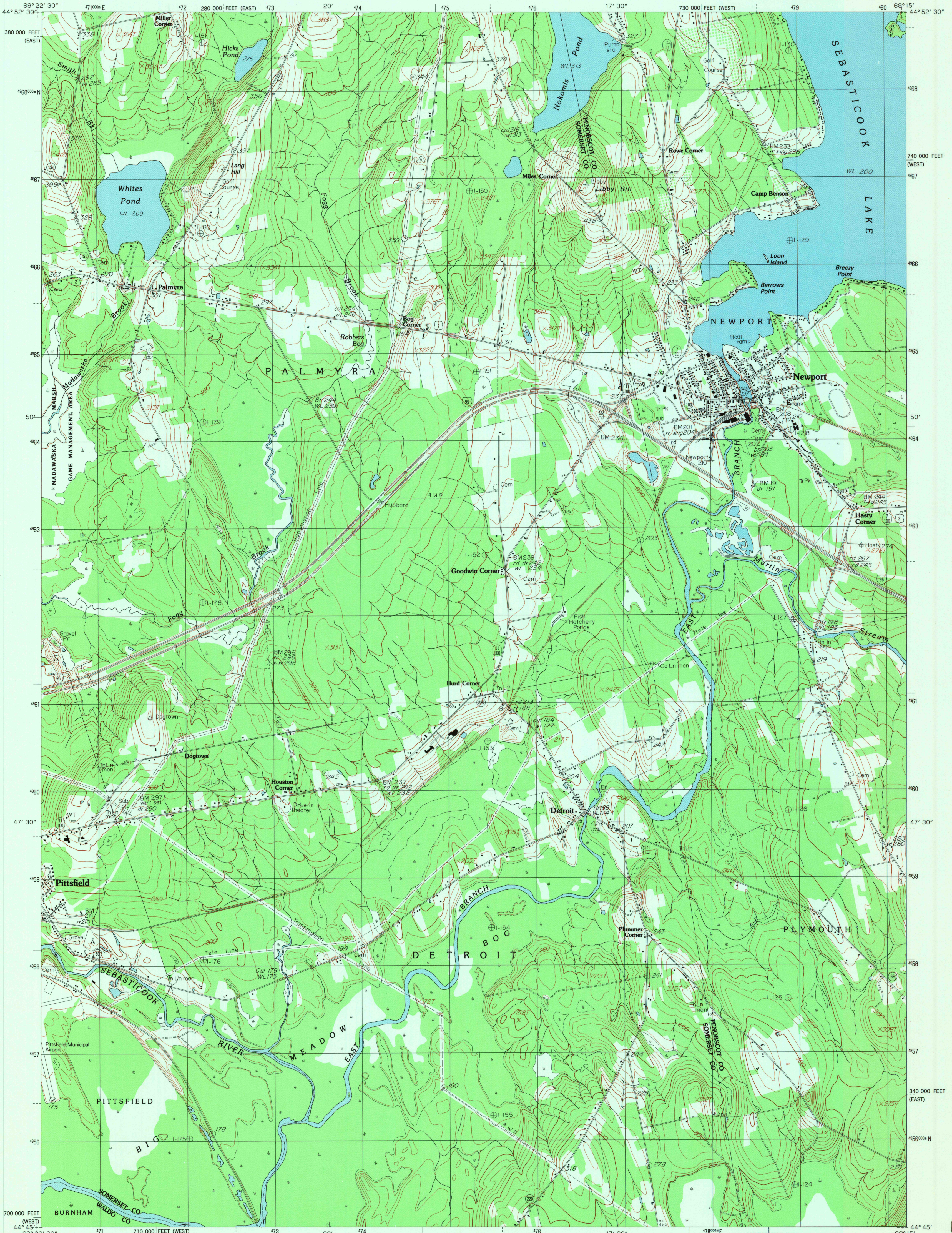


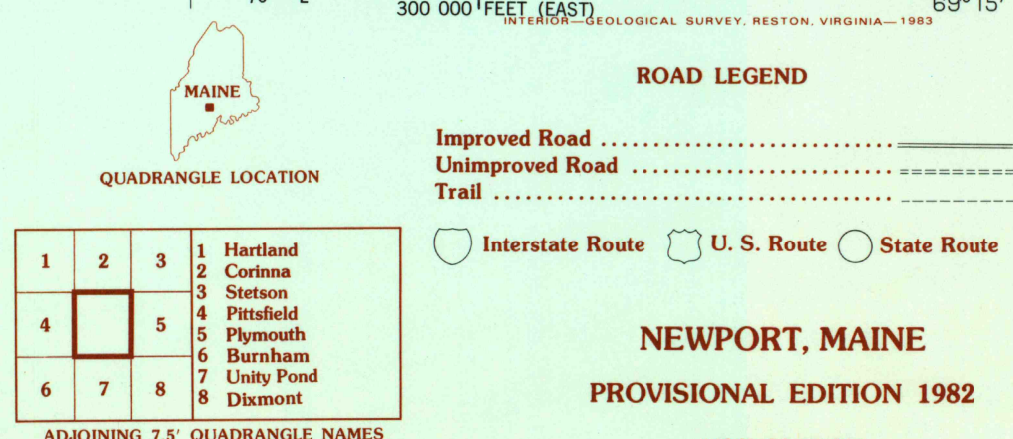
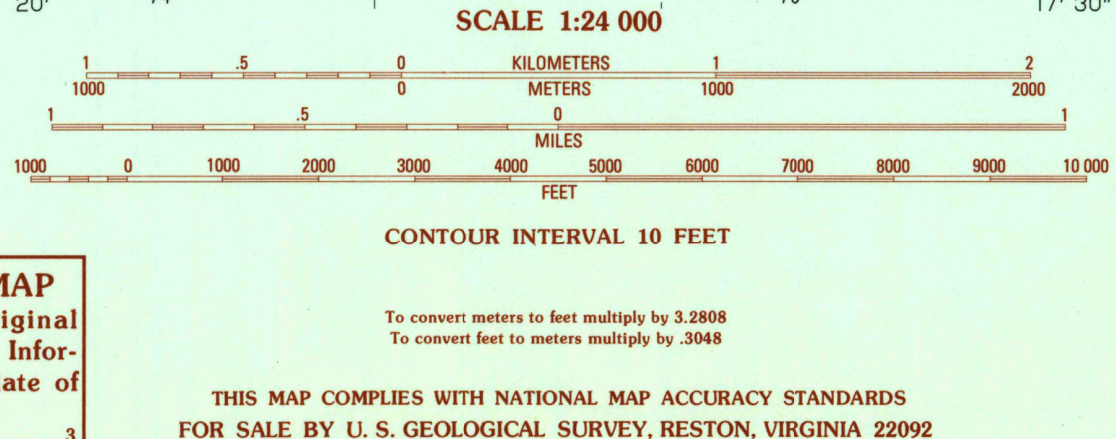
UNITED STATES  
DEPARTMENT OF THE INTERIOR  
GEOLOGICAL SURVEY

NEWPORT QUADRANGLE  
MAINE  
7.5 MINUTE SERIES (TOPOGRAPHIC)



PRODUCED BY THE UNITED STATES GEOLOGICAL SURVEY  
CONTROL BY: USGS AND NOS/NOAA  
COMPILED FROM AERIAL PHOTOGRAPHS TAKEN: 1976  
FIELD CHECKED: 1979, MAP EDITED: 1982  
PROJECTION: TRANSVERSE MERCATOR  
GRID: 1000-METER UNIVERSAL TRANSVERSE MERCATOR ZONE 19  
UTM GRID DECLINATION: 01° WEST  
1983 MAGNETIC NORTH DECLINATION: 18° 30' EAST  
VERTICAL DATUM: NATIONAL GEODETIC VERTICAL DATUM OF 1929  
HORIZONTAL DATUM: 1927 NORTH AMERICAN DATUM  
To place on the predicted North American Datum of 1983, move the projection lines as shown by dashed corner ticks (3 meters south and 43 meters west)  
There may be private inholdings within the boundaries of any Federal and State Reservations shown on this map

**PROVISIONAL MAP**  
Produced from original  
manuscript drawings. Infor-  
mation shown as of date of  
field check



MAR 28 1983

1900