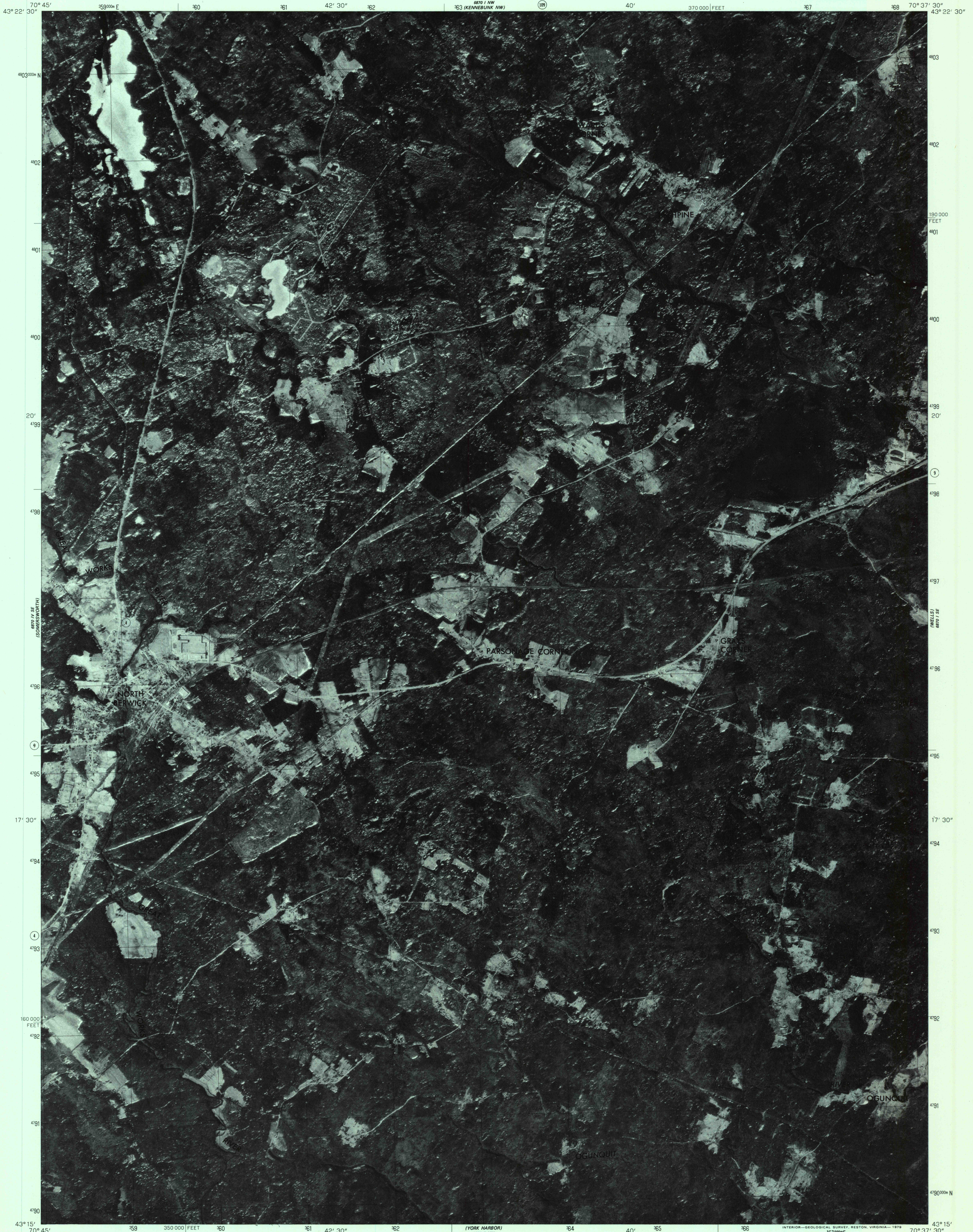


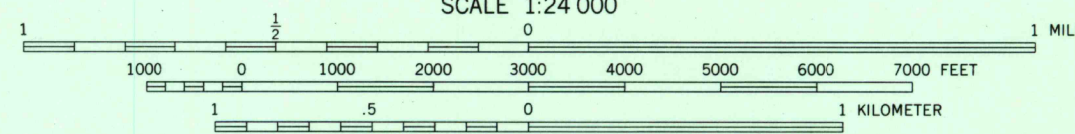
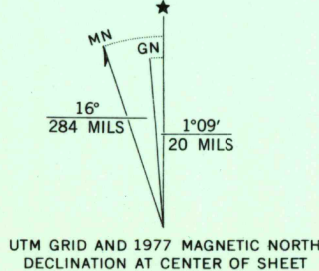
UNITED STATES
DEPARTMENT OF THE INTERIOR
GEOLOGICAL SURVEY



NORTH BERWICK QUADRANGLE
MAINE
7.5 MINUTE SERIES ORTHOPHOTOQUAD



Produced and published by the Geological Survey
in cooperation with the Soil Conservation Service
Orthophoto prepared from 1:80,000-scale
aerial photograph taken April 1, 1977
Projection and 10,000-foot grid ticks: Maine
coordinate system, west zone (transverse Mercator)
1000-meter Universal Transverse Mercator grid,
zone 19. 1927 North American datum
Photomage rectified by optical scanning
which may produce double or mismatched images;
use the mean of image positions for map point



PRINCIPAL NUMBERED HIGHWAYS
○ Interstate Route ○ U. S. Route ○ State Route



USGS
Historical File
Topographic Division

This quadrangle area also covered by
1:24,000-scale topographic map

NORTH BERWICK, ME.
N4315-W7037.5/7.5

1977

AMS 6870 1 SW-SERIES V011

THIS MAP COMPLIES WITH NATIONAL MAP ACCURACY STANDARDS
FOR SALE BY U. S. GEOLOGICAL SURVEY, RESTON, VIRGINIA 22092

SEP 13 1979

1000