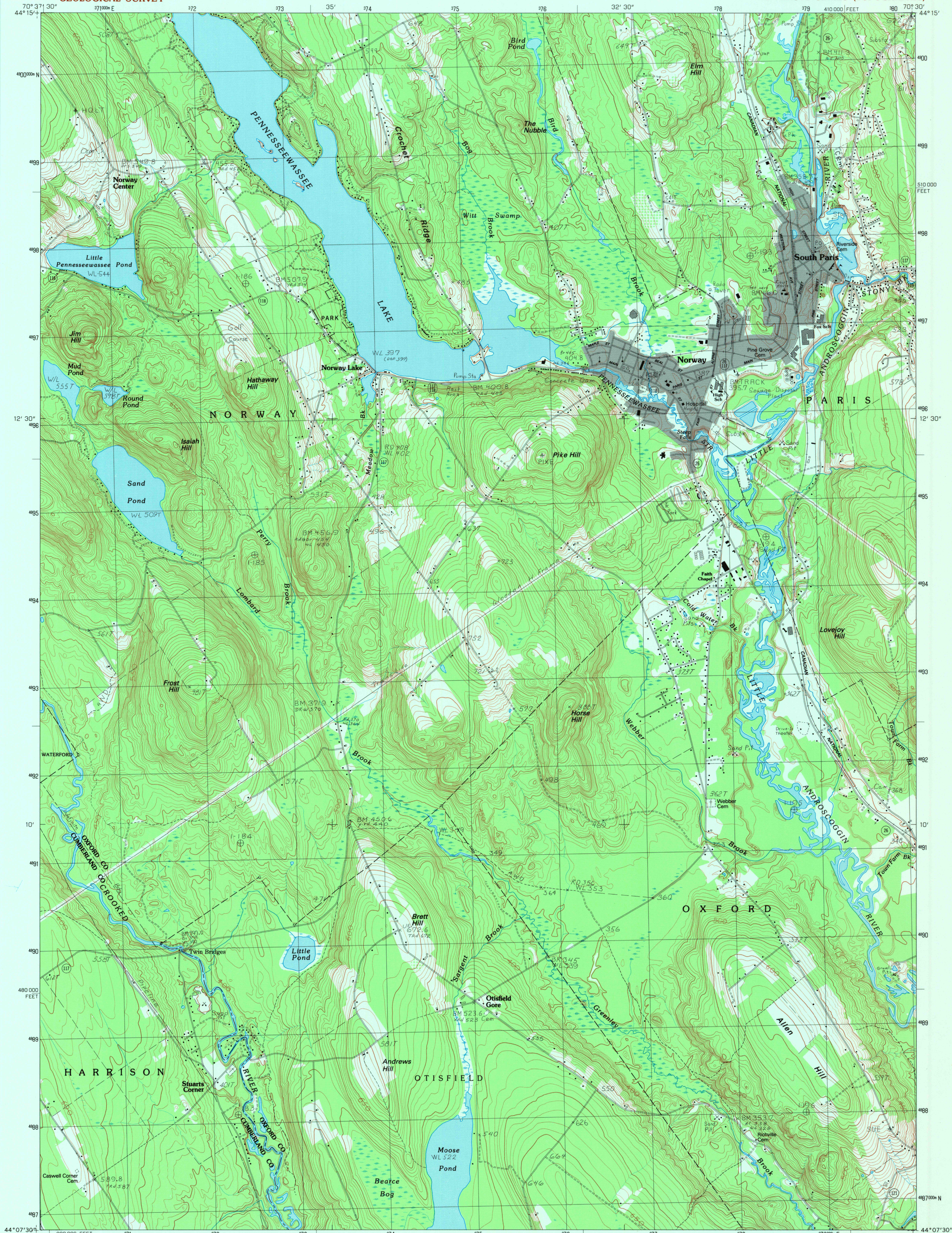


UNITED STATES
DEPARTMENT OF THE INTERIOR
GEOLOGICAL SURVEY

NORWAY QUADRANGLE
MAINE
7.5 MINUTE SERIES (TOPOGRAPHIC)



PRODUCED BY THE UNITED STATES GEOLOGICAL SURVEY
CONTROL BY USGS, WASHINGTON, D.C. AND MAINE DEPARTMENT OF
TRANSPORTATION
COMPILED FROM AERIAL PHOTOGRAPHS TAKEN 1978
FIELD CHECKED 1981. MAP EDITED 1983
PROJECTION TRANSVERSE MERCATOR
GRID: 1000-METER UNIVERSAL TRANSVERSE MERCATOR ZONE 19
10,000-FOOT STATE GRID TICS MAINE, WEST ZONE
UTM GRID DECLINATION 1983 NORTH AMERICAN DATUM
1983 MAGNETIC NORTH DECLINATION 1730' WEST
VERTICAL DATUM NATIONAL GEODETIC VERTICAL DATUM OF 1929
HORIZONTAL DATUM 1927 NORTH AMERICAN DATUM
To place on the predicted North American Datum of 1983, move
the projection lines as shown by dashed corner ticks (4 meters
south and 41 meters west)
There may be private inholdings within the boundaries of any
Federal and State Reservations shown on this map
Gray tint indicates area in which selected buildings are shown

PROVISIONAL MAP
Produced from original
manuscript drawings. Information
shown as of date of
field check

SCALE 1:24 000
1 000 0 1000 2000
KILOMETERS
1 000 0 1000 2000
METERS
1 000 0 1000 2000
MILES
1000 0 1000 2000 3000 4000 5000 6000 7000 8000 9000 10 000
FEET
CONTOUR INTERVAL 10 FEET
To convert meters to feet multiply by 3.2808
To convert feet to meters multiply by .3048
THIS MAP COMPLIES WITH NATIONAL MAP ACCURACY STANDARDS
FOR SALE BY U. S. GEOLOGICAL SURVEY, RESTON, VIRGINIA 22092

1	2	3	1	Greenwood
2	3	4	2	West Paris
3	4	5	3	West Summer
4	5	6	4	Waterford Flat
5	6	7	5	Oxford
6	7	8	6	Bridgton
7	8		7	Casco
8			8	Mechanic Falls

ADJOINING 7.5 QUADRANGLE NAMES

ROAD LEGEND
Improved Road
Unimproved Road
Trail
Interstate Route
U. S. Route
State Route
NORWAY, MAINE
PROVISIONAL EDITION 1983
44070-B5-TF-024

USGS NMD HISTORICAL MAP
REC'D FILE COPY