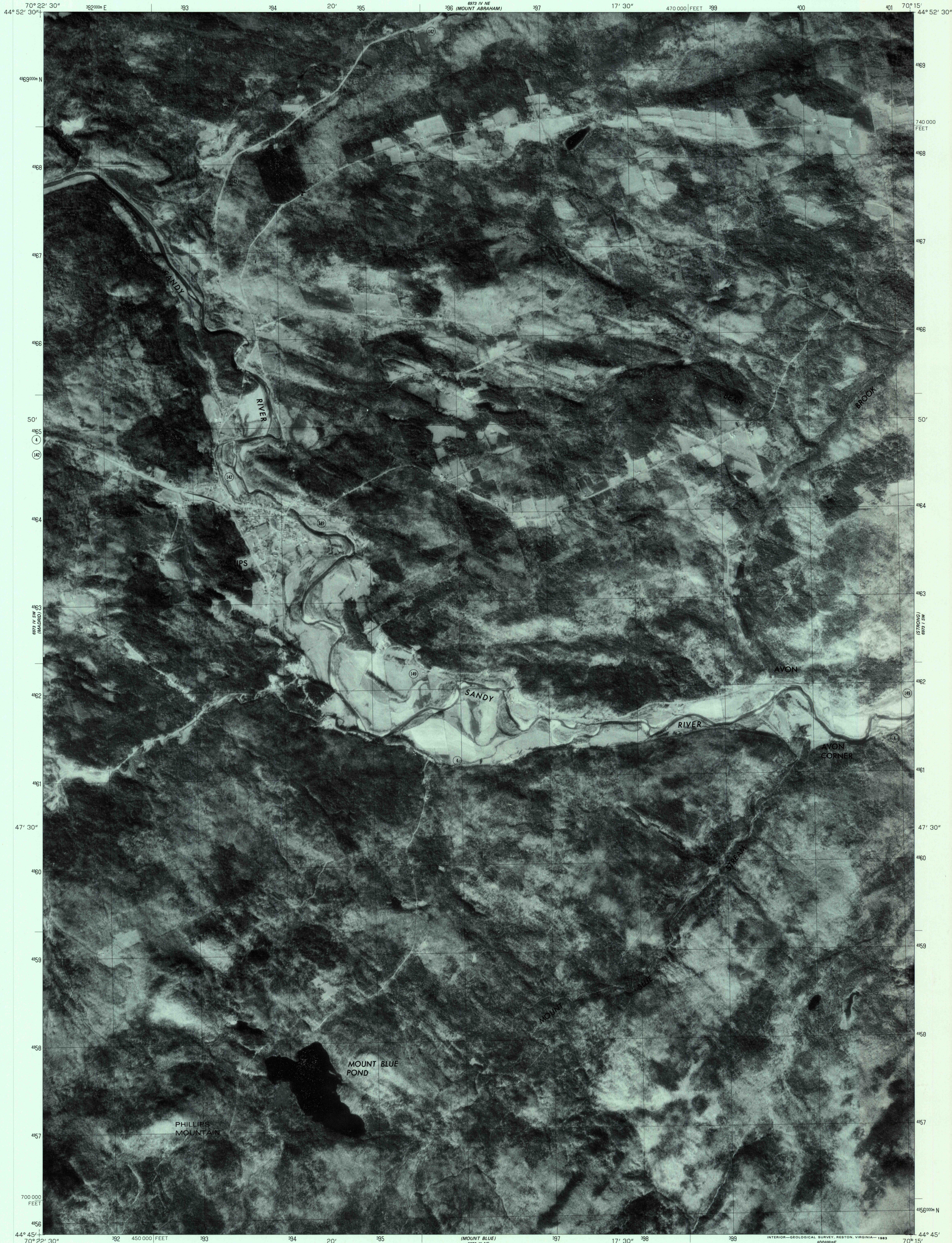
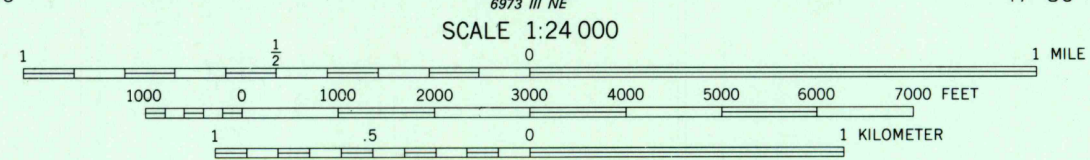
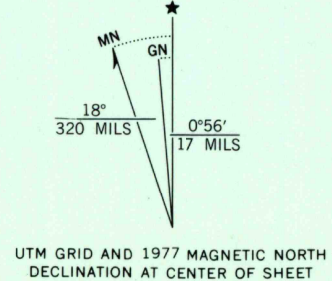


UNITED STATES  
DEPARTMENT OF THE INTERIOR  
GEOLOGICAL SURVEY

PHILLIPS QUADRANGLE  
MAINE  
7.5 MINUTE SERIES ORTHOPHOTOQUAD



Produced and published by the Geological Survey  
Orthophotograph prepared from 1:80,000-scale  
aerial photograph taken October 31, 1977  
Projection and 10,000-foot grid ticks: Maine  
coordinate system, west zone (transverse Mercator)  
1000-meter Universal Transverse Mercator grid,  
zone 19. 1927 North American Datum  
To place on the predicted North American Datum 1983  
move the projection lines 3 meters south and  
41 meters west as shown by dashed corner ticks  
Photomimagery rectified by automatic correlation



PRINCIPAL NUMBERED HIGHWAYS  
○ Interstate Route ○ U. S. Route ○ State Route

This quadrangle area also covered by SE quarter  
of Phillips 1:62,500-scale topographic map

PHILLIPS, MAINE  
N4445-W7015/7.5

1977  
DMA 6973 IV SE-SERIES V011

THIS MAP COMPLIES WITH NATIONAL MAP ACCURACY STANDARDS  
FOR SALE BY U.S. GEOLOGICAL SURVEY, RESTON, VIRGINIA 22092

RETURN TO:  
U.S. GEOLOGICAL SURVEY  
NATIONAL CENTER, MS-522  
RESTON, VA 22092