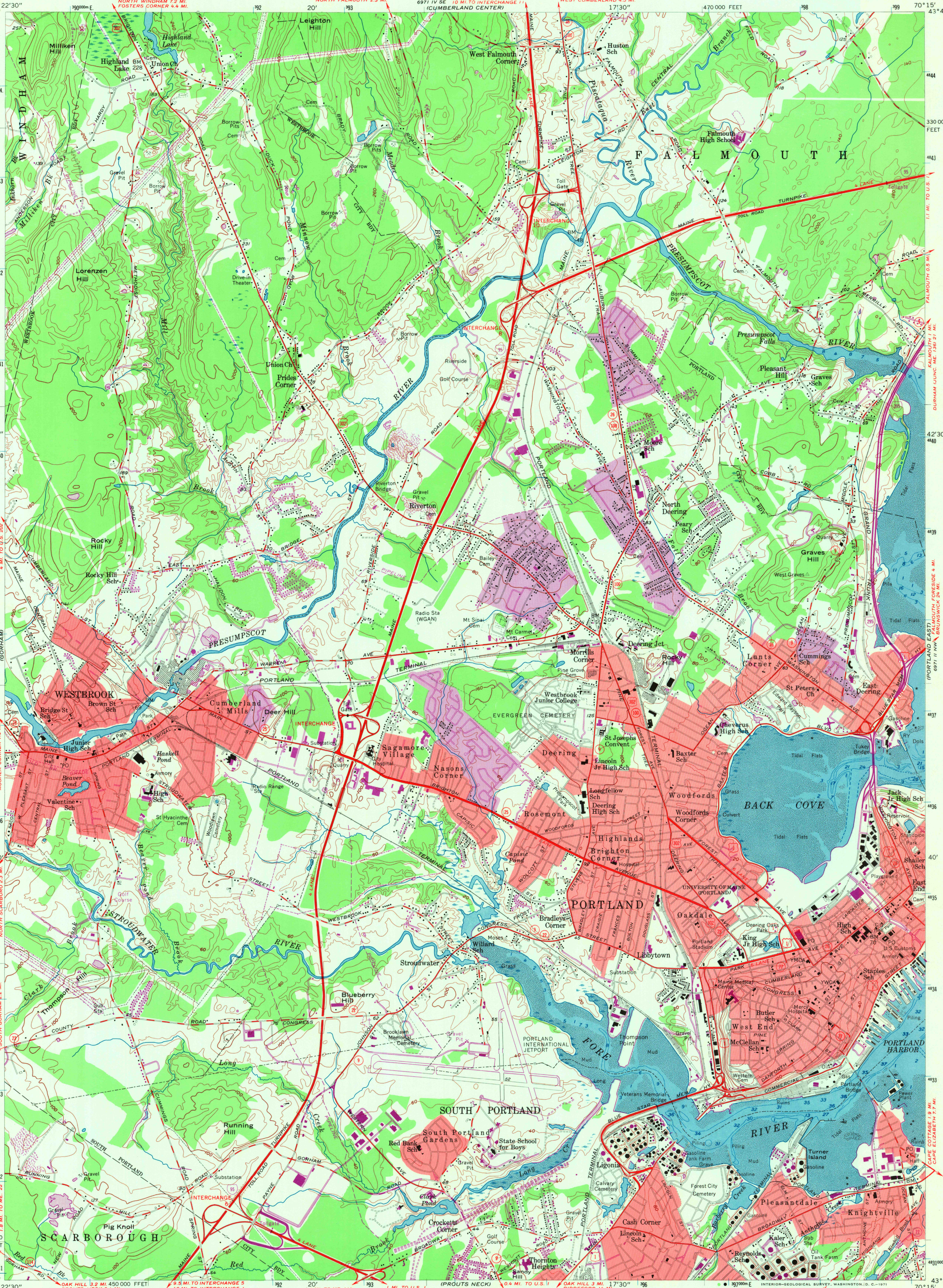


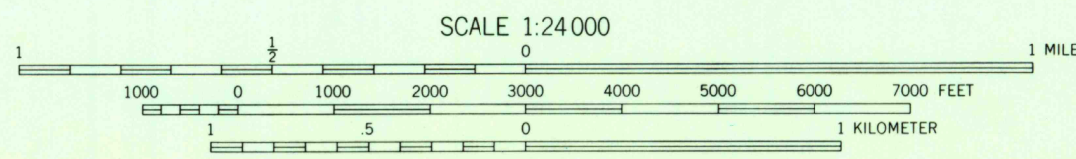
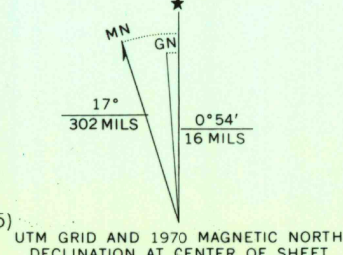
UNITED STATES  
DEPARTMENT OF THE INTERIOR  
GEOLOGICAL SURVEY

UNITED STATES  
DEPARTMENT OF THE ARMY  
CORPS OF ENGINEERS

PORTLAND WEST QUADRANGLE  
MAINE - CUMBERLAND CO.  
7.5 MINUTE SERIES (TOPOGRAPHIC)  
NE/4 PORTLAND 15' QUADRANGLE



Mapped by the Army Map Service  
Edited and published by the Geological Survey  
Control by USGS, USC&GS, and USCE  
Culture and drainage in part compiled from aerial  
photographs taken 1943  
Topography by planetable surveys 1944  
Culture revised by the Geological Survey by photogrammetric  
methods from aerial photographs taken 1956. Field check 1956  
Selected hydrographic data compiled from USC&GS chart 325 (1955)  
This information is not intended for navigational purposes  
Polyconic projection. 1927 North American datum  
10,000-foot grid based on Maine coordinate system, west zone  
1000-meter Universal Transverse Mercator grid ticks,  
zone 19, shown in blue  
Red tint indicates areas in which only landmark buildings are shown



THIS MAP COMPLIES WITH NATIONAL MAP ACCURACY STANDARDS  
FOR SALE BY U.S. GEOLOGICAL SURVEY, WASHINGTON, D.C. 20242  
A FOLDER DESCRIBING TOPOGRAPHIC MAPS AND SYMBOLS IS AVAILABLE ON REQUEST

ROAD CLASSIFICATION  
Heavy-duty ——— Light-duty ———  
Medium-duty ——— Unimproved dirt ———  
U.S. Route ——— State Route ———

PORTLAND WEST, ME.  
NE/4 PORTLAND 15' QUADRANGLE  
N4337.5—W7015.7.5

1956  
PHOTOREVISED 1970  
AMS 6971 III NE-SERIES V811

Revisions shown in purple compiled by the Geological  
Survey from aerial photographs taken 1970. This  
information not field checked  
Purple tint indicates extension of urban areas

USGS  
HISTORICAL FILE  
TOPOGRAPHIC DIVISION

NOV 1 1971  
3290