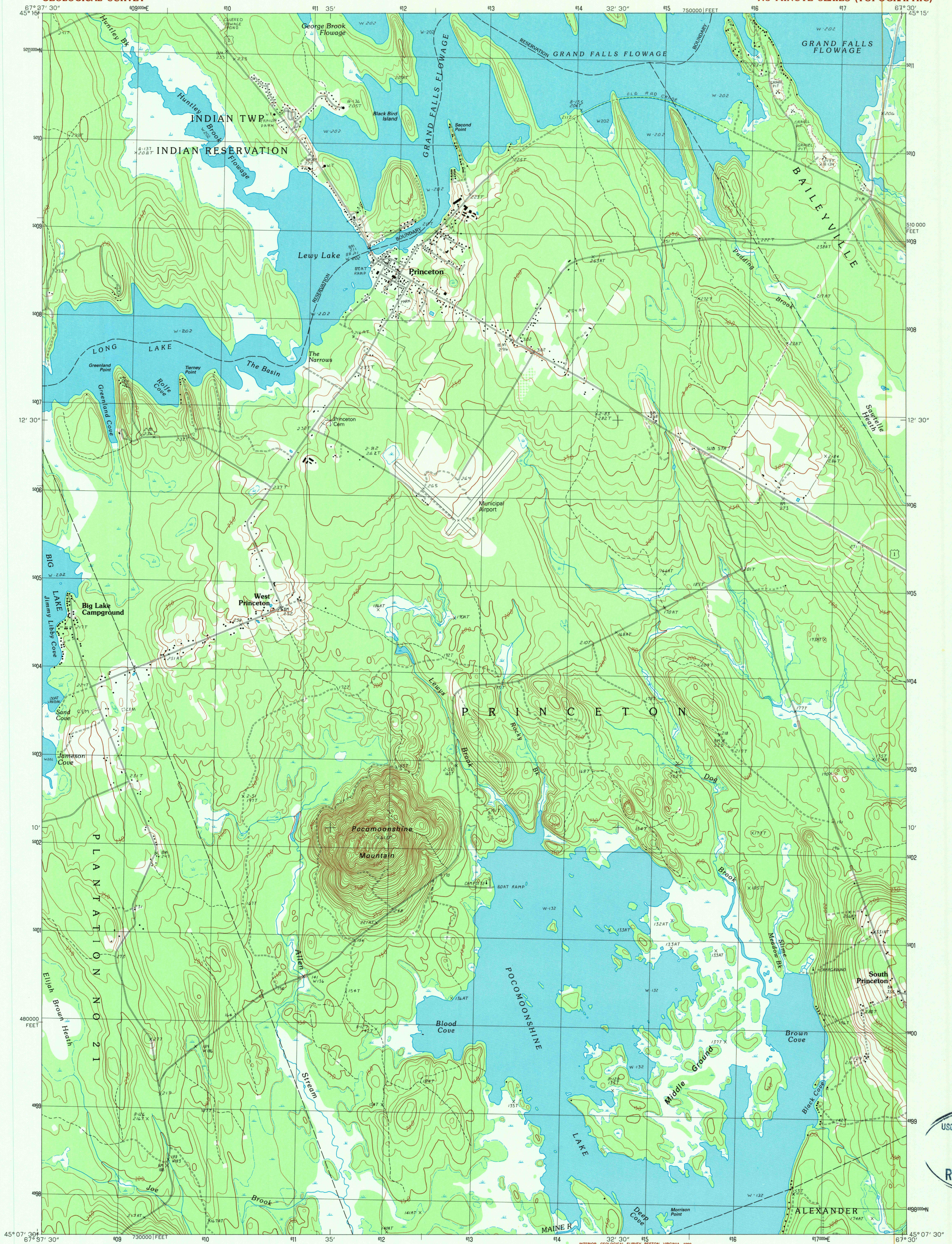


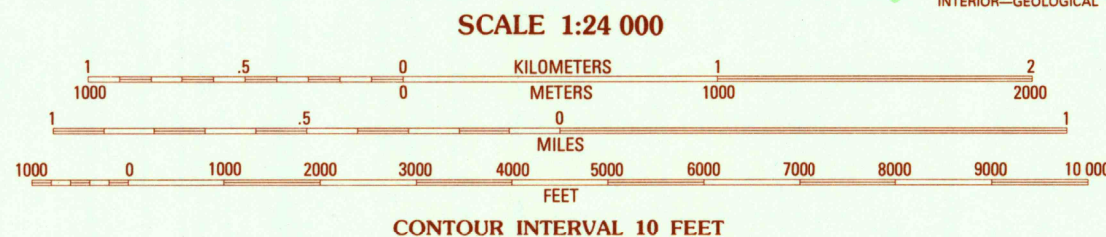
UNITED STATES  
DEPARTMENT OF THE INTERIOR  
GEOLOGICAL SURVEY

PRINCETON QUADRANGLE  
MAINE-WASHINGTON CO.  
7.5 MINUTE SERIES (TOPOGRAPHIC)



PRODUCED BY THE UNITED STATES GEOLOGICAL SURVEY  
CONTROL BY: USGS AND NOS/NOAA  
COMPILED FROM AERIAL PHOTOGRAPHS TAKEN: 1984  
FIELD CHECKED: 1986. MAP EDITED: 1990  
PROJECTION: 1000-METER UNIVERSAL TRANSVERSE MERCATOR  
GRID: 10,000-FOOT STATE GRID TICS  
UTM GRID DECLINATION: 1° 01' EAST  
1989 MAGNETIC NORTH DECLINATION: 19° 30' WEST  
VERTICAL DATUM: NATIONAL GEODETIC DATUM OF 1929  
HORIZONTAL DATUM: 1927 NORTH AMERICAN DATUM  
To place on the predicted North American Datum of 1983,  
move the projection lines as shown by dashed corner ticks  
(0 meters north and 48 meters west)  
There may be private inholdings within the boundaries of any  
Federal or State reservations shown on this map  
No distinction made between houses, barns, and other buildings

**PROVISIONAL MAP**  
Produced from original  
manuscript drawings. Infor-  
mation shown as of date of  
photography.



SCALE 1:24 000

CONTOUR INTERVAL 10 FEET

To convert meters to feet multiply by 3.2808  
To convert feet to meters multiply by .3048

THIS MAP COMPLIES WITH NATIONAL MAP ACCURACY STANDARDS  
FOR SALE BY U. S. GEOLOGICAL SURVEY  
DENVER, COLORADO 80225, OR RESTON, VIRGINIA 22092



QUADRANGLE LOCATION

1	2	3	1 Waite
			2 Tomah Ridge
			3 Kellyland
4		5	4 Big Lake
			5 Woodland
			6 Clifford Lake
6	7	8	7 Crawford Lake
			8 Meddybump Lake
			West

ADJOINING 7.5' QUADRANGLE NAMES

**ROAD LEGEND**  
Improved Road .....  
Unimproved Road .....  
Trail .....  
Interstate Route .....  
U. S. Route .....  
State Route .....

**PRINCETON, MAINE**  
PROVISIONAL EDITION 1990

45067-B5-TF-024

USGS NMD HISTORICAL MAP  
JUN 28 1990  
REC'D FILE COPY