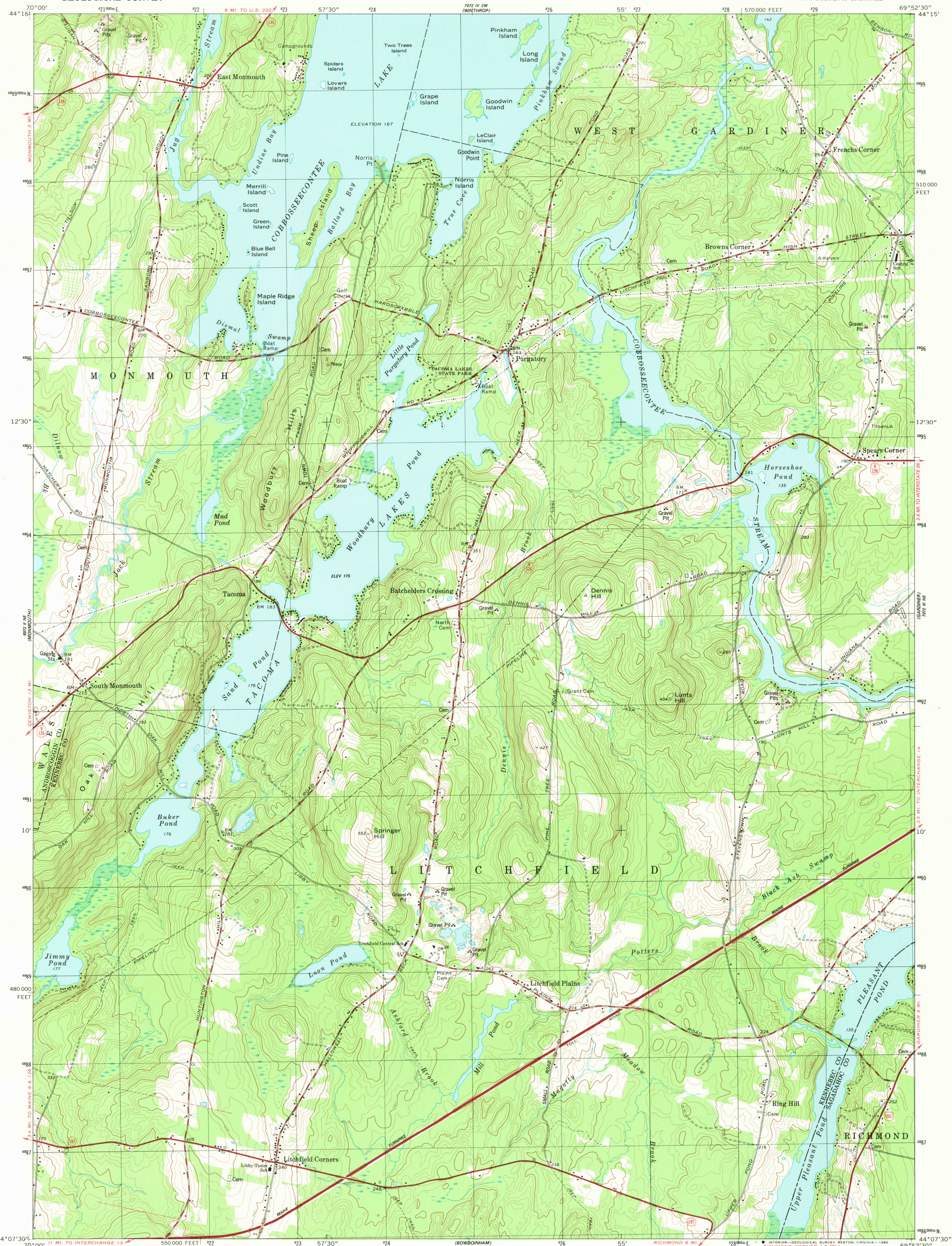


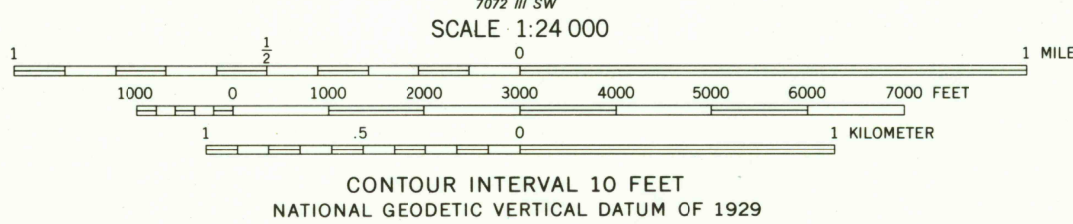
UNITED STATES  
DEPARTMENT OF THE INTERIOR  
GEOLOGICAL SURVEY

PURGATORY QUADRANGLE  
MAINE  
7.5 MINUTE SERIES (TOPOGRAPHIC)  
NW 1/4 GARDINER 15' QUADRANGLE



Mapped, edited, and published by the Geological Survey

Control by USGS, NOS/NOAA, and Maine Geodetic Survey  
Topography by photogrammetric methods from aerial photographs  
taken 1972. Field checked 1974. Map edited 1980  
Projection and 10,000-foot grid ticks: Maine coordinate  
system, west zone (Lambert conformal conic)  
1000-meter Universal Transverse Mercator grid, zone 19  
1927 North American Datum  
To place on the predicted North American Datum 1983  
move the projection lines 4 meters south and  
42 meters west as shown by dashed corner ticks  
Fine red dashed lines indicate selected fence and field lines where  
generally visible on aerial photographs. This information is unchecked  
There may be private inholdings within the boundaries of the  
National or State reservations shown on this map



ROAD CLASSIFICATION  
Primary highway, hard surface  
Secondary highway, hard surface  
Light-duty road, hard or improved surface  
Unimproved road  
Interstate Route  
U. S. Route  
State Route



PURGATORY, MAINE  
NW 1/4 GARDINER 15' QUADRANGLE  
N4407.5—W6952.5/7.5  
1980  
DMA 7072 III NW—SERIES V811