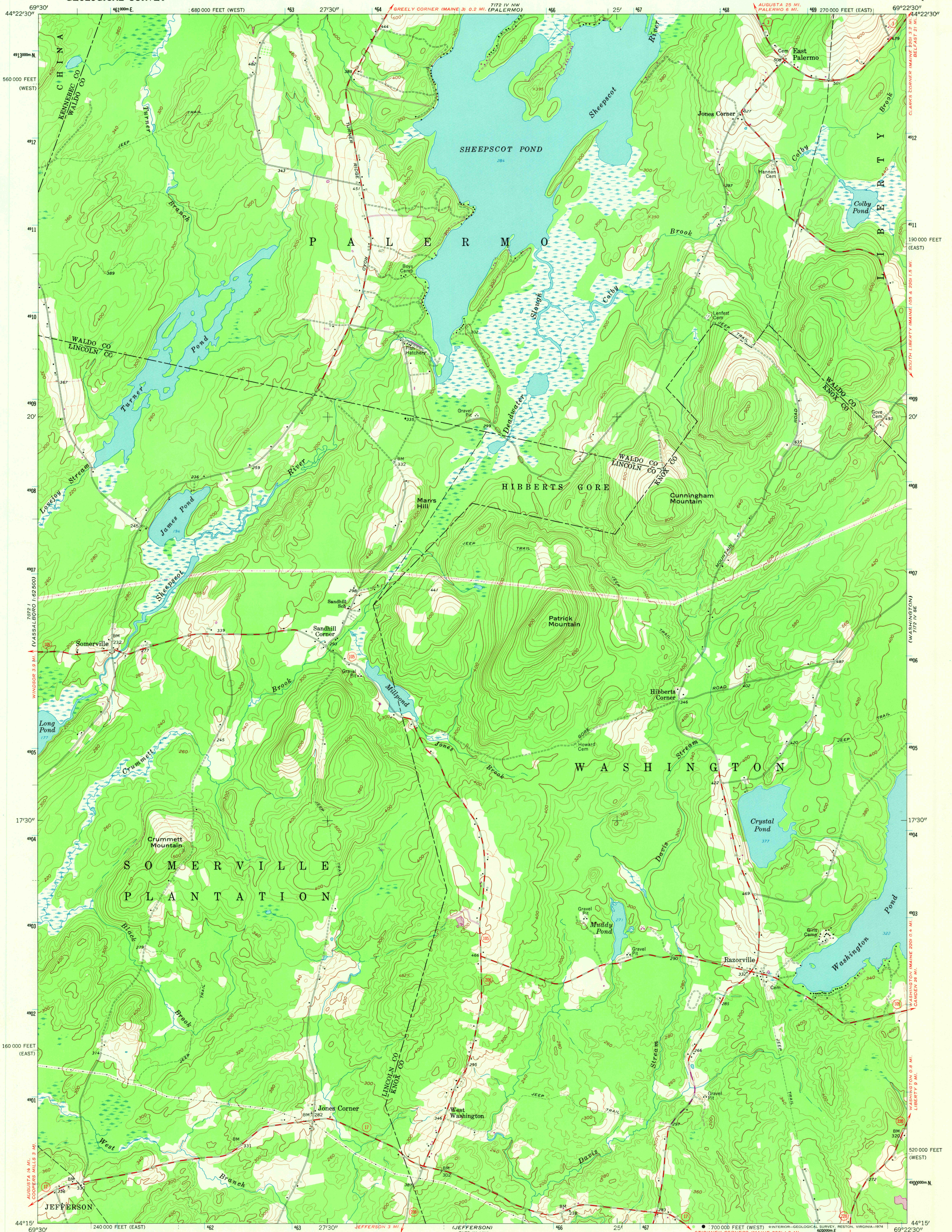
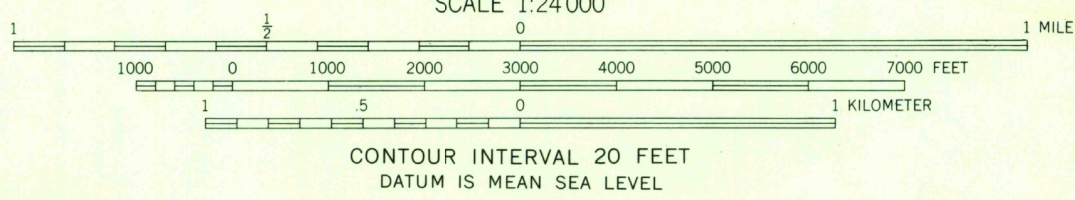
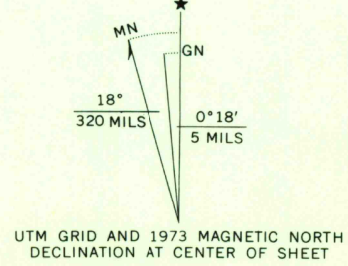


UNITED STATES  
DEPARTMENT OF THE INTERIOR  
GEOLOGICAL SURVEY

RAZORVILLE QUADRANGLE  
MAINE  
7.5 MINUTE SERIES (TOPOGRAPHIC)



Mapped, edited, and published by the Geological Survey  
Control by USGS and USC&GS  
Topography by photogrammetric methods from aerial  
photographs taken 1956. Field checked 1961  
Polyconic projection. 1927 North American datum  
10,000-foot grids based on Maine coordinate system, east and  
west zones  
1000-meter Universal Transverse Mercator grid ticks,  
zone 19, shown in blue  
Fine red dashed lines indicate selected fence and field lines where  
generally visible on aerial photographs. This information is unchecked  
Revisions shown in purple compiled from aerial photographs  
taken 1973. This information not field checked



ROAD CLASSIFICATION  
Medium-duty ——— Light-duty ———  
Unimproved dirt ———  
State Route AUG 5 1974

RAZORVILLE, MAINE  
N4415—W6922.5/7.5  
1961  
PHOTOREVISED 1973  
AMS 7172 IV SW—SERIES V811

THIS MAP COMPLIES WITH NATIONAL MAP ACCURACY STANDARDS  
FOR SALE BY U.S. GEOLOGICAL SURVEY, WASHINGTON, D.C. 20242  
A FOLDER DESCRIBING TOPOGRAPHIC MAPS AND SYMBOLS IS AVAILABLE ON REQUEST

Pridemack  
4500  
50 June