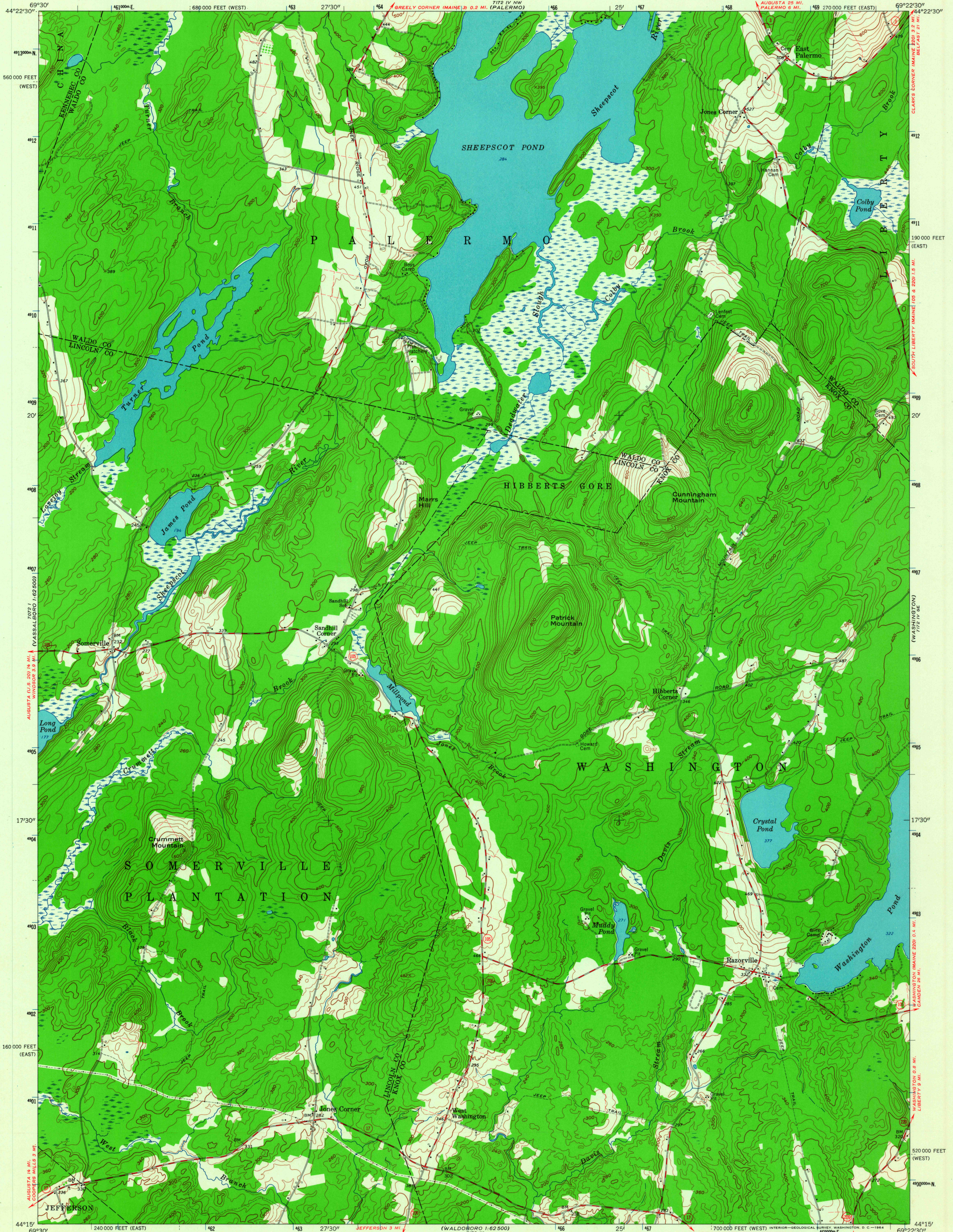
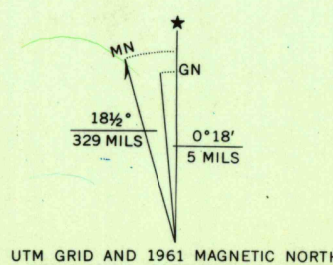


UNITED STATES
DEPARTMENT OF THE INTERIOR
GEOLOGICAL SURVEY

RAZORVILLE QUADRANGLE
MAINE
7.5 MINUTE SERIES (TOPOGRAPHIC)



Mapped, edited, and published by the Geological Survey
Control by USGS and USC&GS
Topography by photogrammetric methods from aerial
photographs taken 1956. Field checked 1961
Polyconic projection. 1927 North American datum
10,000-foot grids based on Maine coordinate system, east and
west zones
1000-meter Universal Transverse Mercator grid ticks,
zone 19, shown in blue
Fine red dashed lines indicate selected fence and field lines where
generally visible on aerial photographs. This information is unchecked



SCALE 1:24,000
CONTOUR INTERVAL 20 FEET
DATUM IS MEAN SEA LEVEL

ROAD CLASSIFICATION
Medium-duty ——— Light-duty ———
Unimproved dirt ———
○ State Route

THIS MAP COMPLIES WITH NATIONAL MAP ACCURACY STANDARDS
FOR SALE BY U.S. GEOLOGICAL SURVEY, WASHINGTON 25, D. C.
A FOLDER DESCRIBING TOPOGRAPHIC MAPS AND SYMBOLS IS AVAILABLE ON REQUEST



U.S.G.S.
FILE COPY
TOPOGRAPHIC DIVISION

RAZORVILLE, MAINE
SW 1/4 LIBERTY 15' QUADRANGLE
N4415—W6922.5/7.5

1961
AMS 7172 IV SW—SERIES V811

APR 20 1964