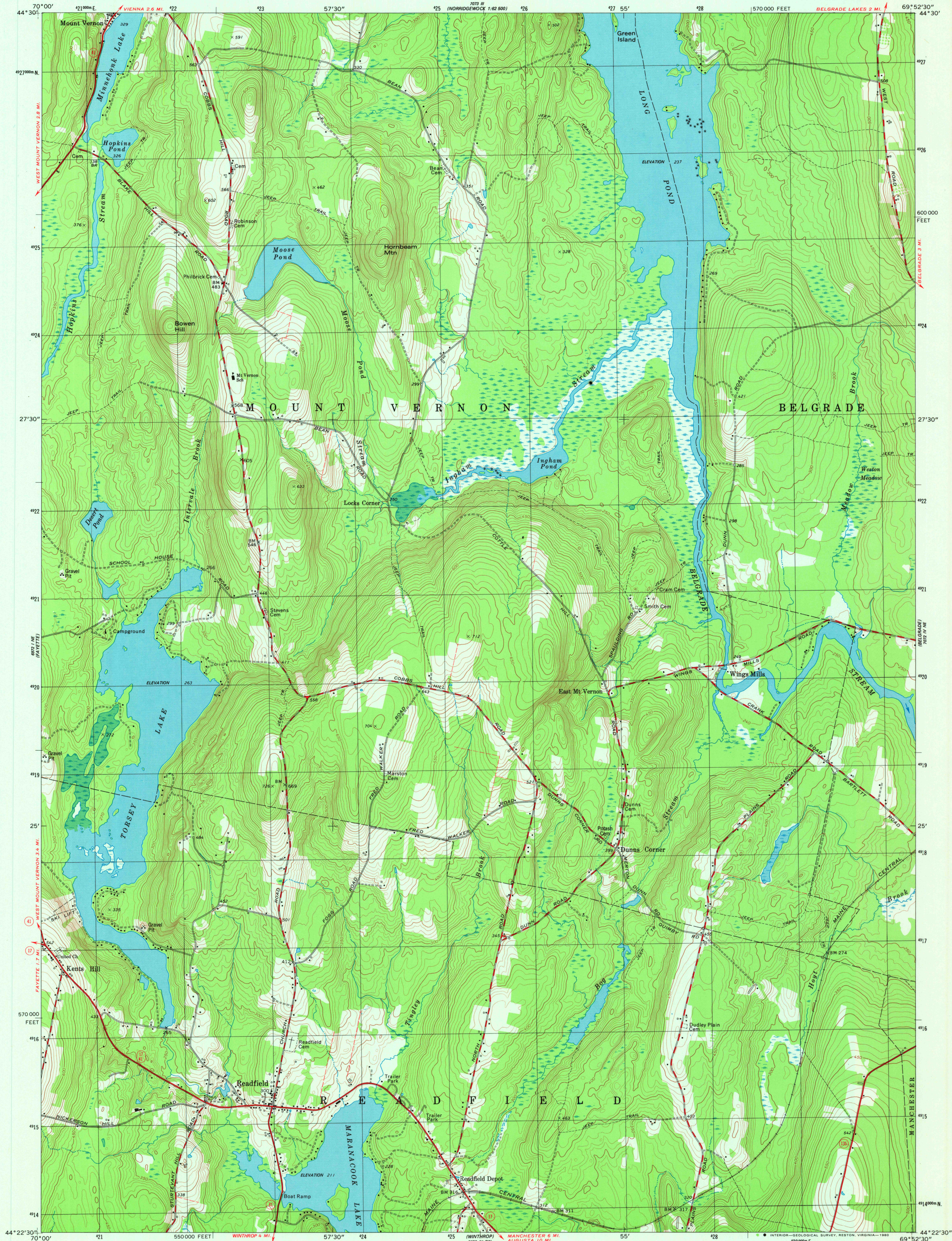


UNITED STATES
DEPARTMENT OF THE INTERIOR
GEOLOGICAL SURVEY

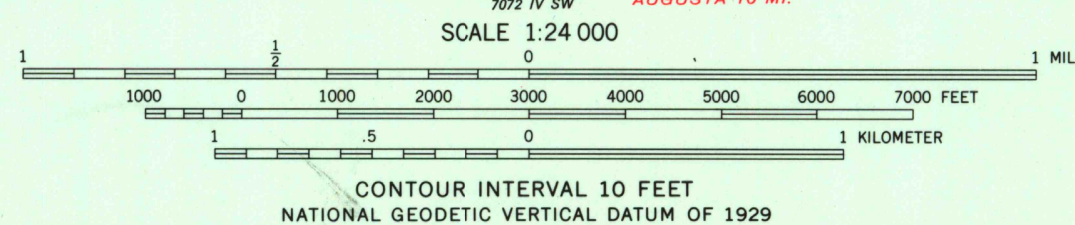
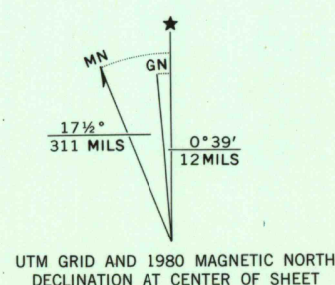
READFIELD QUADRANGLE
MAINE-KENNEBEC CO.
7.5 MINUTE SERIES (TOPOGRAPHIC)

NW/4 AUGUSTA 15' QUADRANGLE

70° 52' 30" W
1:62,500



Mapped, edited, and published by the Geological Survey
Control by USGS and NOS/NOAA
Topography by photogrammetric methods from aerial photographs
taken 1972. Field checked 1974. Map edited 1980
Projection and 10,000-foot grid ticks: Maine coordinate
system, west zone (transverse Mercator)
1000-meter Universal Transverse Mercator grid, zone 19
1927 North American Datum
To place on the predicted North American Datum 1983
move the projection lines 4 meters south and
42 meters west as shown by dashed corner ticks
Fine red dashed lines indicate selected fence and field lines where
generally visible on aerial photographs. This information is unchecked



THIS MAP COMPLIES WITH NATIONAL MAP ACCURACY STANDARDS
FOR SALE BY U.S. GEOLOGICAL SURVEY, RESTON, VIRGINIA 22092
A FOLDER DESCRIBING TOPOGRAPHIC MAPS AND SYMBOLS IS AVAILABLE ON REQUEST



ROAD CLASSIFICATION
Primary highway, hard surface
Secondary highway, hard surface
Unimproved road
Interstate Route
U. S. Route
State Route

USGS
Historical File
Topographic Division

READFIELD, MAINE
NW/4 AUGUSTA 15' QUADRANGLE
N4422.5-W6952.5/7.5
1980

DMA 7072 IV NW-SERIES V811

JUN - 5 1980

1600