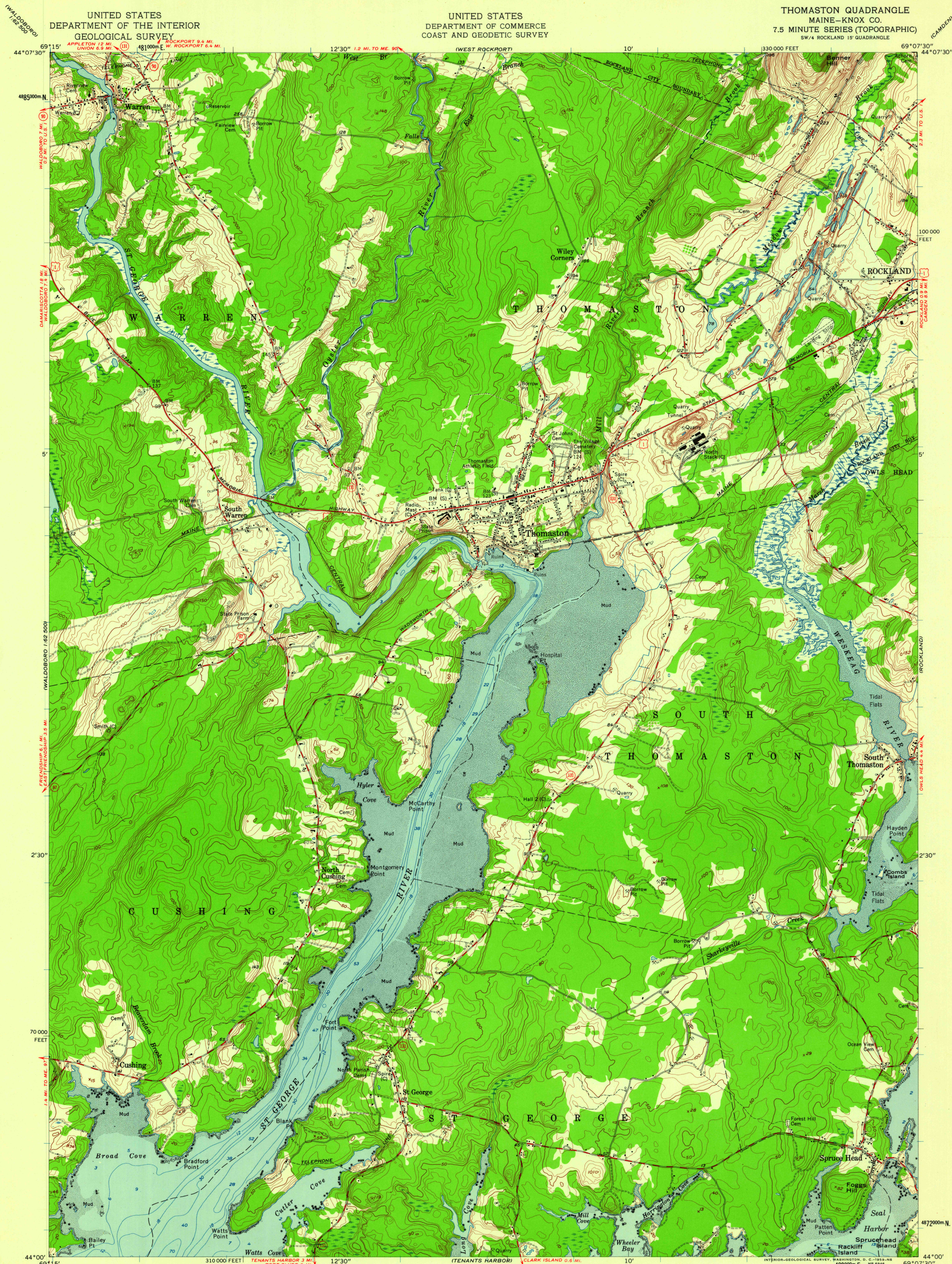


UNITED STATES
DEPARTMENT OF THE INTERIOR
GEOLOGICAL SURVEY

UNITED STATES
DEPARTMENT OF COMMERCE
COAST AND GEODETIC SURVEY

THOMASTON QUADRANGLE
MAINE-KNOX CO.
7.5 MINUTE SERIES (TOPOGRAPHIC)
SW 1/4 ROCKLAND 15' QUADRANGLE



Mapped by U. S. Coast and Geodetic Survey
Edited and published by the Geological Survey
Control by USC&GS (C) and Maine Geodetic Survey (S)
Topography from aerial photographs by photogrammetric methods
Aerial photographs taken 1952-1953.
Field check 1955
Hydrography compiled from USC&GS charts 313 (1954),
322 (1952) and supplementary information
Polyconic projection. 1927 North American datum
10,000-foot grid based on Maine coordinate system, east zone
1000-meter Universal Transverse Mercator grid ticks,
zone 19, shown in blue
Unchecked elevations are shown in brown

TRUE NORTH
APPROXIMATE MEAN
DECLINATION, 1955

SCALE 1:24,000
1 000 0 1000 2000 3000 4000 5000 6000 7000 FEET
1 0 1 2 3 4 5 6 7 8 9 10 KILOMETER
CONTOUR INTERVAL 10 FEET
DATUM IS MEAN SEA LEVEL
DEPTH CURVES AND SOUNDINGS IN FEET—DATUM IS MEAN LOW WATER
SHORELINE SHOWN REPRESENTS THE APPROXIMATE LINE OF MEAN HIGH WATER
THE MEAN RANGE OF TIDE IS APPROXIMATELY 9.4 FEET
THIS MAP COMPLIES WITH NATIONAL MAP ACCURACY STANDARDS
FOR SALE BY U. S. GEOLOGICAL SURVEY, WASHINGTON 25, D. C.
A FOLDER DESCRIBING TOPOGRAPHIC MAPS AND SYMBOLS IS AVAILABLE ON REQUEST



ROAD CLASSIFICATION
Heavy-duty ——— Light-duty ———
Medium-duty ——— Unimproved dirt ———
U.S. Route ——— State Route ———
U.S.G.S.
FILE COPY
TOPOGRAPHIC DIVISION
THOMASTON, MAINE
SW 1/4 ROCKLAND 15' QUADRANGLE
N4400-W6907.5/7.5
1955

JUN 25 1959

3055