

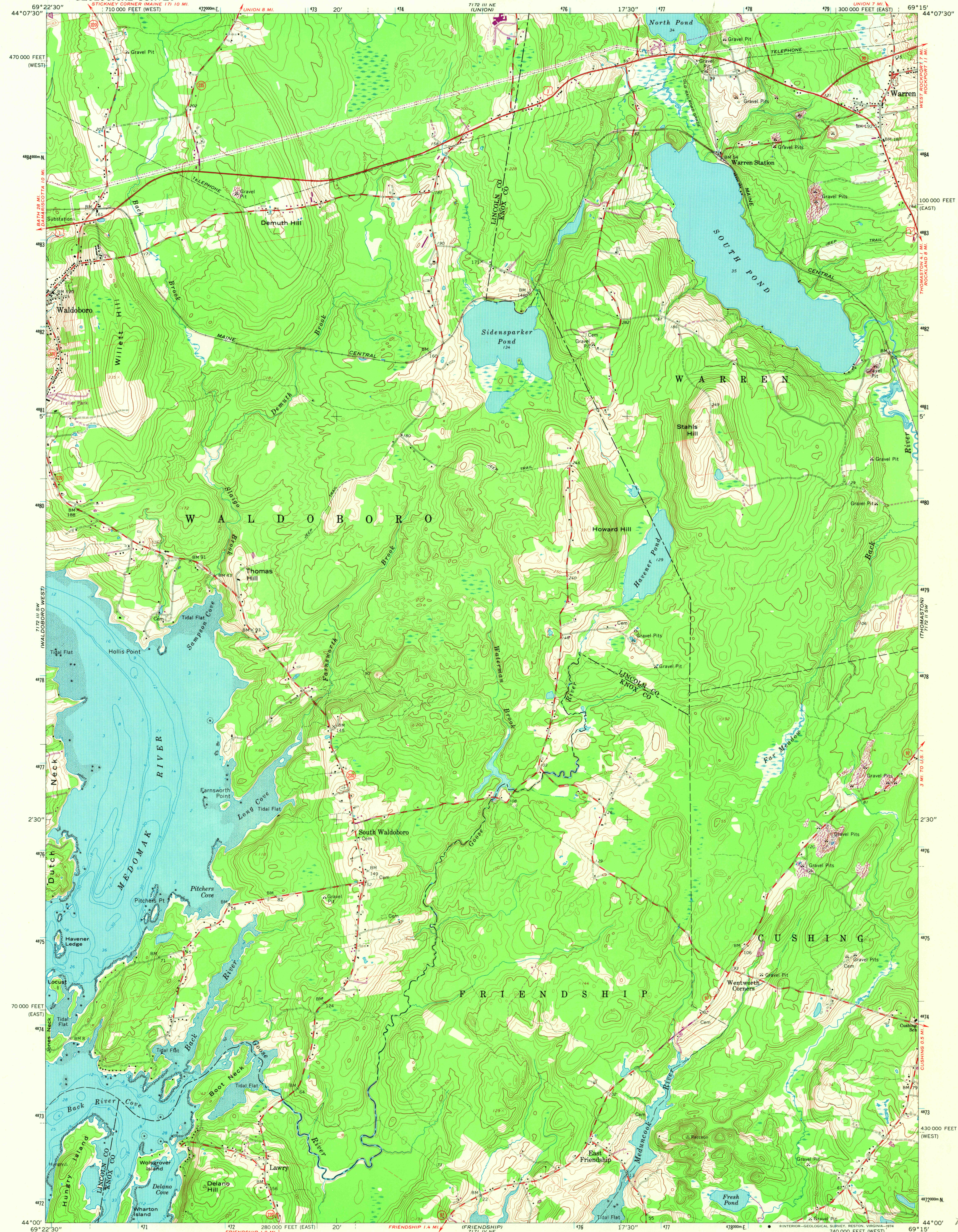
712 III NW
JEFFERSON

UNITED STATES
DEPARTMENT OF THE INTERIOR
GEOLOGICAL SURVEY

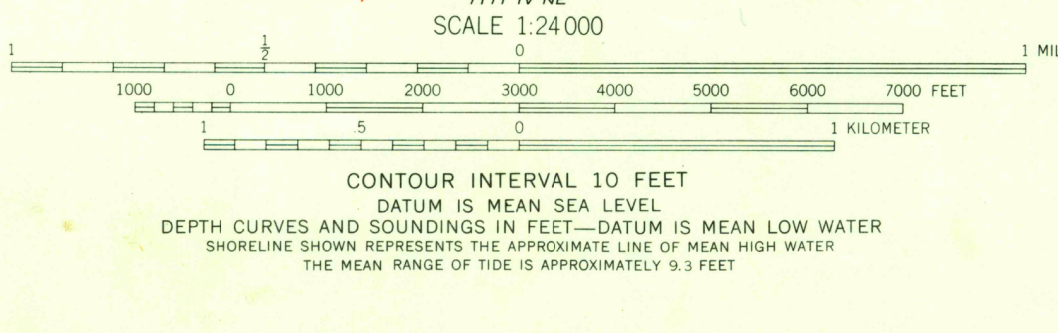
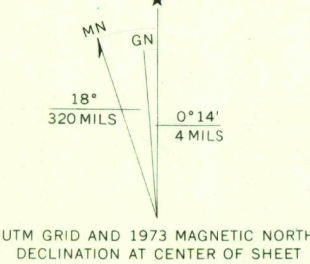
STATE OF MAINE
PUBLIC UTILITIES COMMISSION

WALDOBORO EAST QUADRANGLE
MAINE
7.5 MINUTE SERIES (TOPOGRAPHIC)

712 III NW
WEST ROCKPORT



Mapped, edited, and published by the Geological Survey
Control by USGS, USC&GS, and Maine Geodetic Survey
Topography by photogrammetric methods from aerial
photographs taken 1962. Field checked 1965
Selected hydrographic data compiled from USC&GS Chart 313 (1962)
This information is not intended for navigational purposes
Polyconic projection. 1927 North American datum
10,000-foot grids based on Maine coordinate system,
east and west zones
1000-meter Universal Transverse Mercator grid ticks,
zone 19, shown in blue
Fine red dashed lines indicate selected fence and field lines where
generally visible on aerial photographs. This information is unchecked
Revisions shown in purple compiled from aerial photographs
taken 1973. This information not field checked



ROAD CLASSIFICATION
Heavy-duty ——— Light-duty ———
Medium-duty ——— Unimproved dirt ———
U.S. Route State Route

USGS
Historical File
Topographic Division
N4400—W6915/7.5
1965
PHOTOREVISED 1973
AMS 7172 III SE—SERIES V811

WALDOBORO EAST, MAINE

Pride mark
3000
JUL 11 1974
ITEMS 7172 III SE