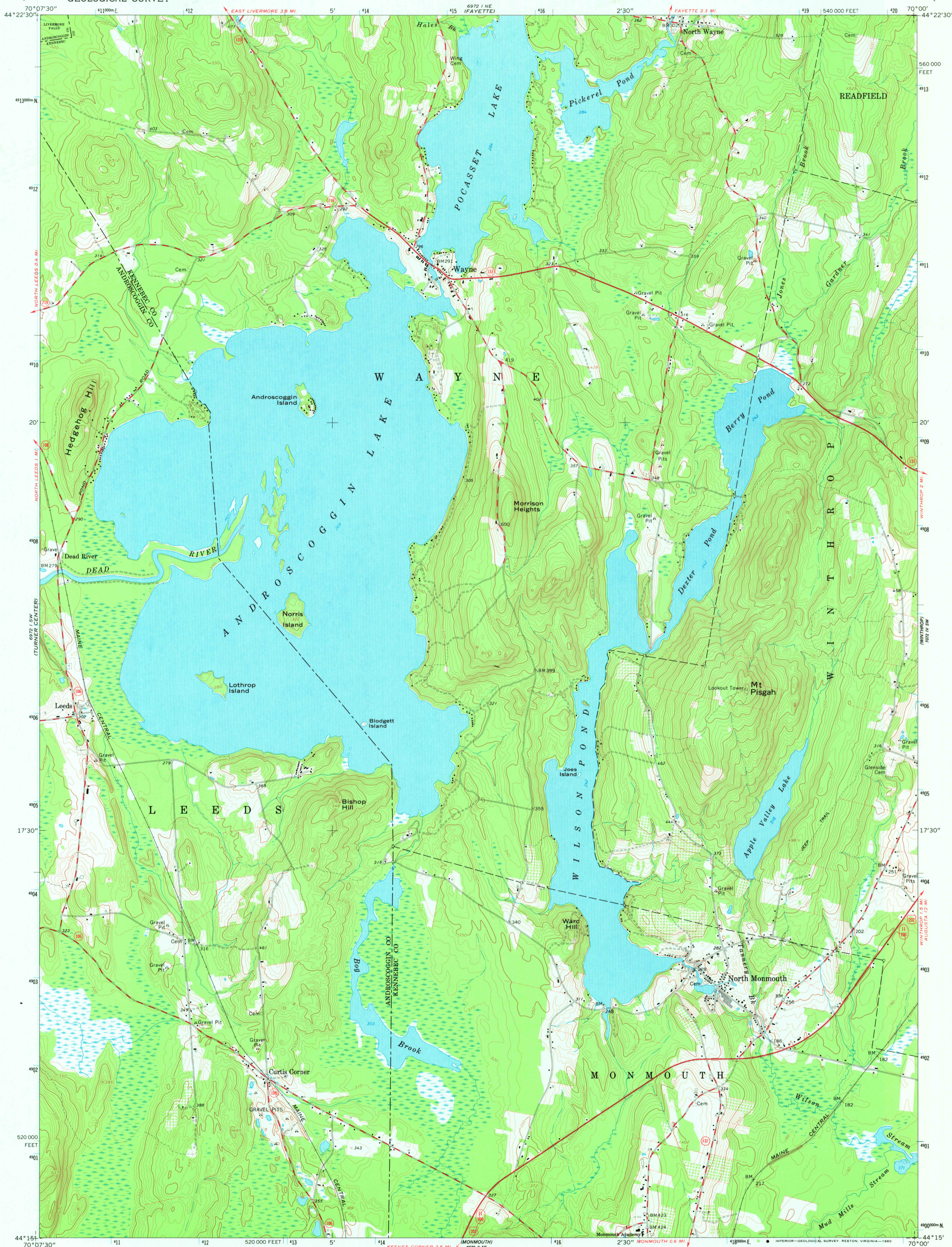
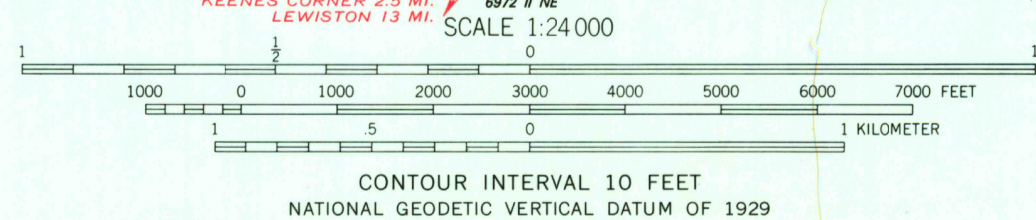
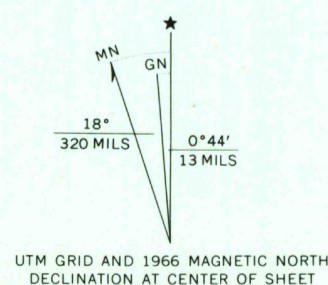


UNITED STATES
DEPARTMENT OF THE INTERIOR
GEOLOGICAL SURVEY

WAYNE QUADRANGLE
MAINE
7.5 MINUTE SERIES (TOPOGRAPHIC)



Mapped, edited, and published by the Geological Survey
Control by USGS, USC&GS, and Maine Geodetic Survey
Topography by photogrammetric methods from aerial photographs
taken 1964. Field checked 1966
Polyconic projection. 1927 North American Datum
10,000-foot grid based on Maine coordinate system, west zone
1000-meter Universal Transverse Mercator grid ticks, zone 19,
shown in blue
To place on the predicted North American Datum 1983
move the projection lines 4 meters south and
41 meters west as shown by dashed corner ticks
Fine red dashed lines indicate selected fence and field lines where
generally visible on aerial photographs. This information is unchecked



ROAD CLASSIFICATION
Heavy-duty ——— Light-duty ———
Medium-duty ——— Unimproved dirt ———
U.S. Route ——— State Route ———

USGS
Historical File
Topographic Division
WAYNE, MAINE
N4415-W7000/7.5
1966

AMS 6972 I SE-SERIES V811

APR - 7 1980

3200