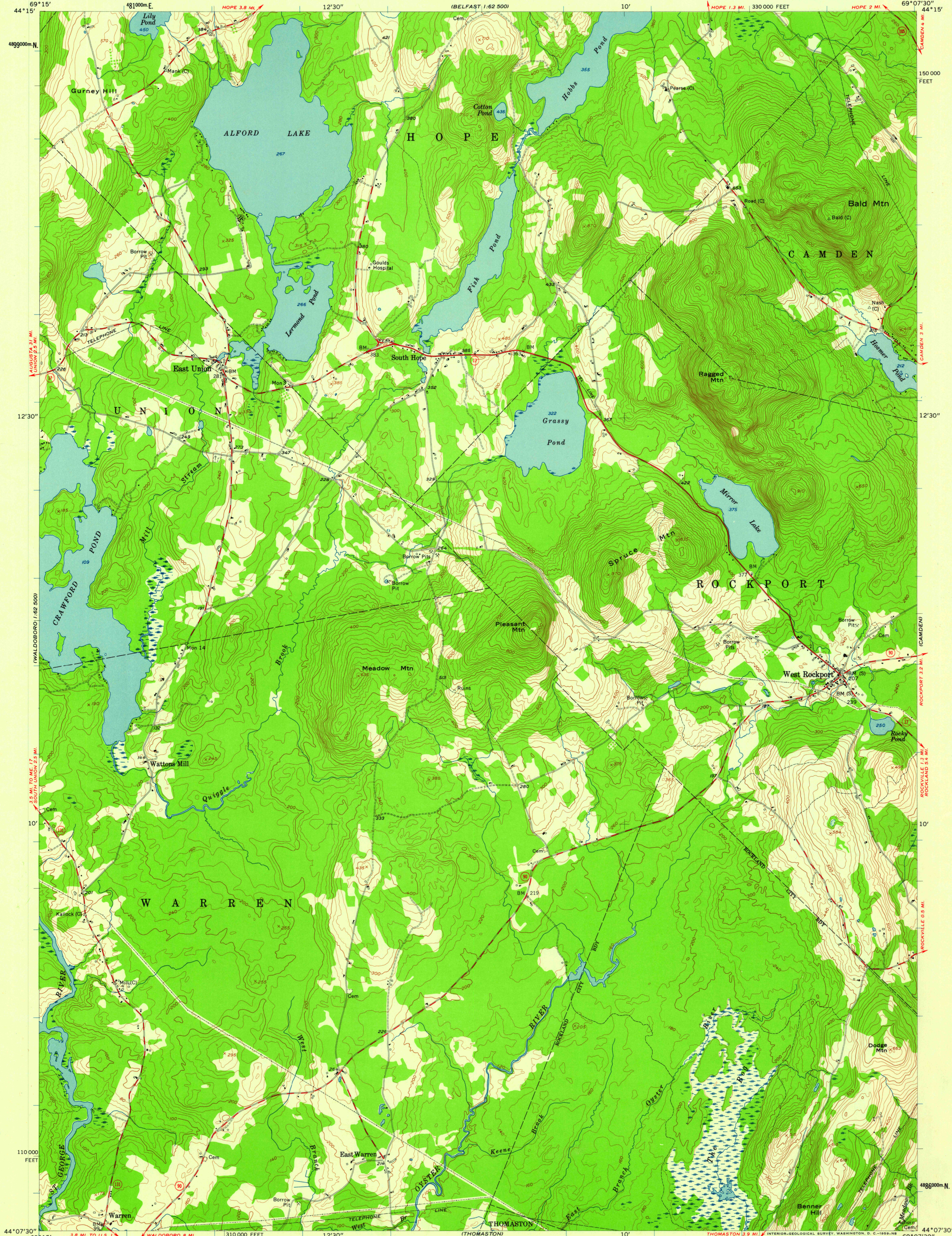


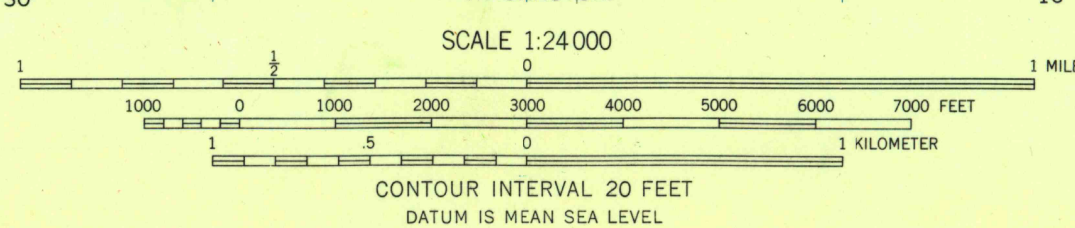
UNITED STATES  
DEPARTMENT OF THE INTERIOR  
GEOLOGICAL SURVEY

UNITED STATES  
DEPARTMENT OF COMMERCE  
COAST AND GEODETIC SURVEY

WEST ROCKPORT QUADRANGLE  
MAINE-KNOX CO.  
7.5 MINUTE SERIES (TOPOGRAPHIC)  
NW/4 ROCKLAND 15' QUADRANGLE



Mapped by U. S. Coast and Geodetic Survey  
Edited and published by the Geological Survey  
Control by USC&GS (C) and Maine Geodetic Survey (S)  
Topography from aerial photographs by photogrammetric  
methods. Aerial photographs taken 1953.  
Field check 1955  
Polyconic projection. 1927 North American datum  
10,000-foot grid based on Maine coordinate system, east zone  
1000-meter Universal Transverse Mercator grid ticks,  
zone 19, shown in blue  
Unchecked elevations are shown in brown



ROAD CLASSIFICATION  
Heavy-duty ——— Light-duty ———  
Medium-duty ——— Unimproved dirt ———  
○ State Route

WEST ROCKPORT, MAINE  
NW/4 ROCKLAND 15' QUADRANGLE  
N4407.5-W6907.5/7.5  
1955

THIS MAP COMPLIES WITH NATIONAL MAP ACCURACY STANDARDS  
FOR SALE BY U. S. GEOLOGICAL SURVEY, WASHINGTON 25, D. C.  
A FOLDER DESCRIBING TOPOGRAPHIC MAPS AND SYMBOLS IS AVAILABLE ON REQUEST

U.S.G.S.  
FILE COPY  
TOPOGRAPHIC DIVISION

MAY - 5 1959

2240