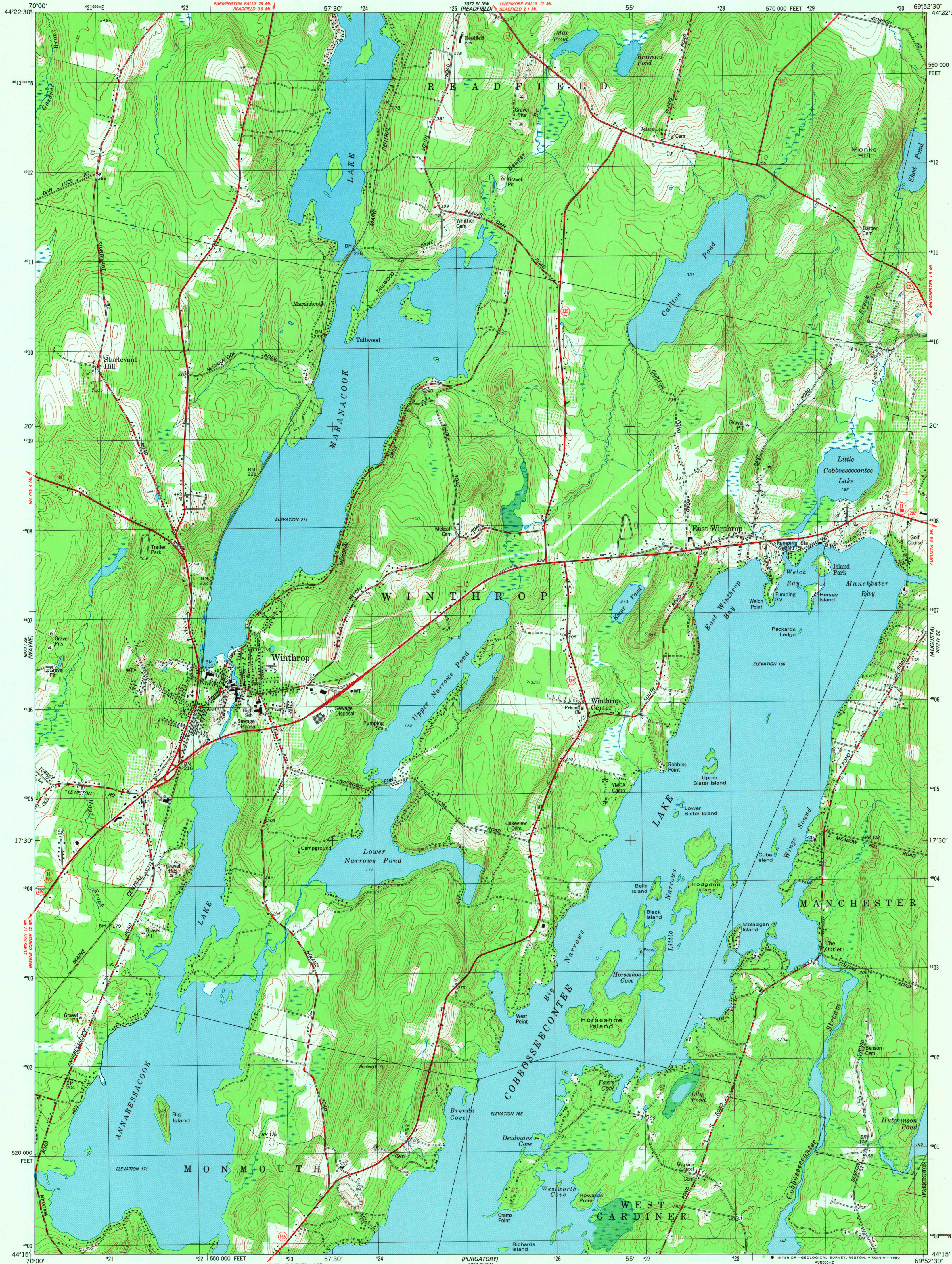


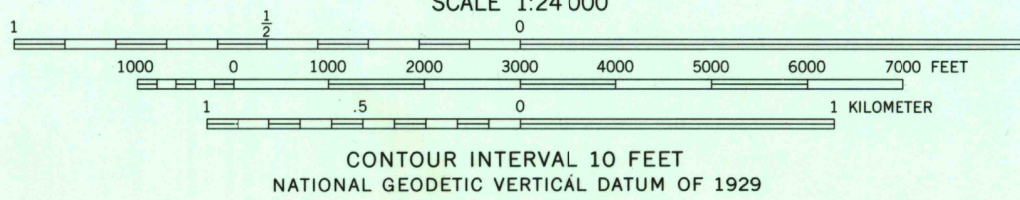
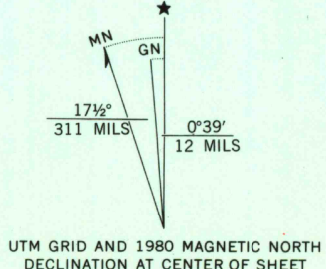
UNITED STATES
DEPARTMENT OF THE INTERIOR
GEOLOGICAL SURVEY

WINTHROP QUADRANGLE
MAINE—KENNEBEC CO.
7.5 MINUTE SERIES (TOPOGRAPHIC)

SW/4 AUGUSTA 15' QUADRANGLE
702 N NW
702 N NE
702 N SE
702 N SW



Mapped, edited, and published by the Geological Survey
Control by USGS, NOS/NOAA, and Maine Geodetic Survey
Topography by photogrammetric methods from aerial photographs
taken 1972. Field checked 1974. Map edited 1980
Projection and 10,000-foot grid ticks. Maine coordinate
system, west zone (transverse Mercator)
1000-meter Universal Transverse Mercator grid, zone 19
1927 North American Datum
To place on the predicted North American Datum 1983
move the projection lines 4 meters south and
42 meters west as shown by dashed corner ticks
Fine red dashed lines indicate selected fence and field lines where
generally visible on aerial photographs. This information is unchecked



ROAD CLASSIFICATION
Primary highway, hard surface
Secondary highway, hard surface
Unimproved road
Interstate Route
U.S. Route
State Route



USGS
Historical File
Topographic Division

WINTHROP, MAINE
SW/4 AUGUSTA 15' QUADRANGLE
N4415—W6952.5/7.5
1980

DMA 702 IV SW—SERIES V811

SEP 23 1980