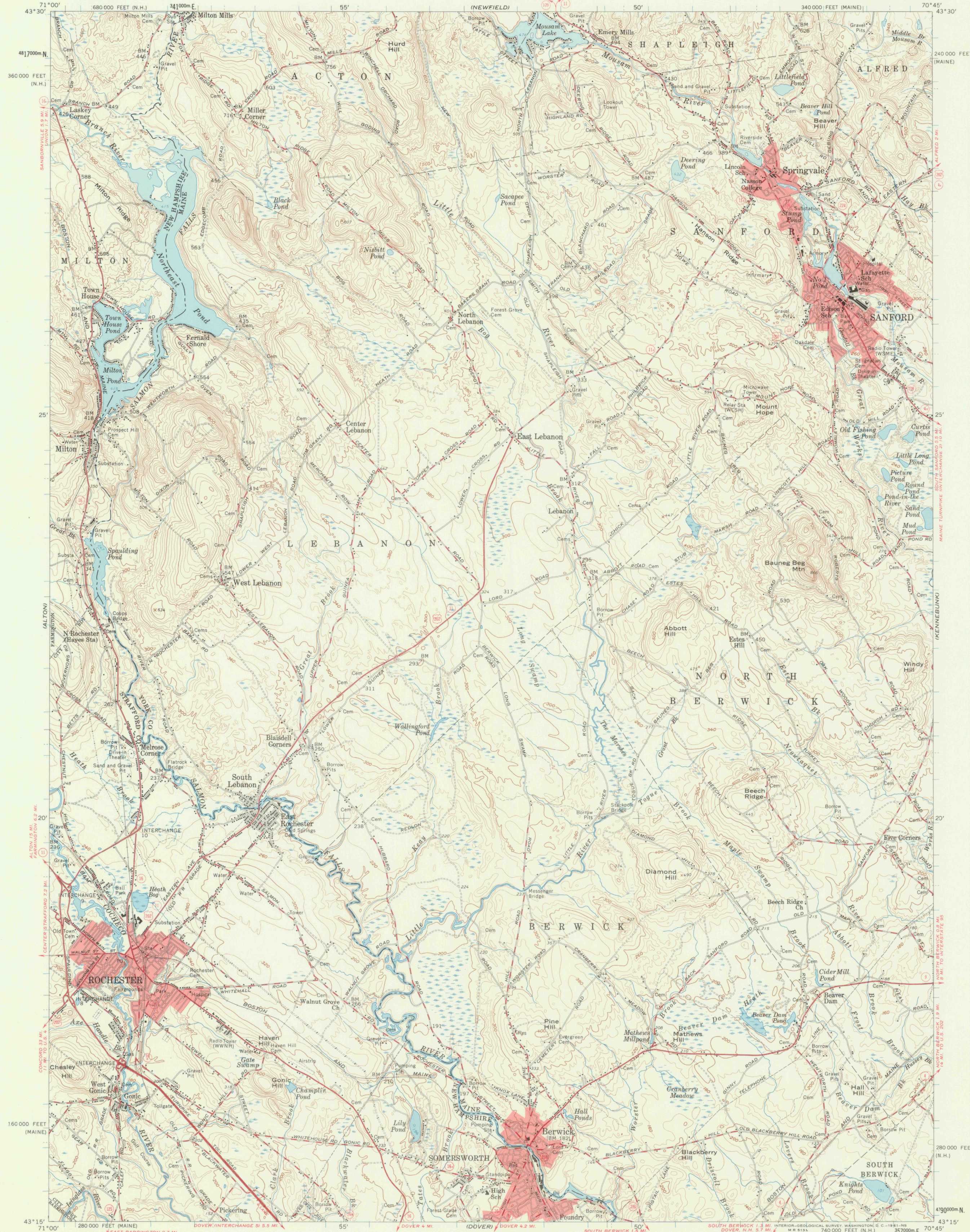
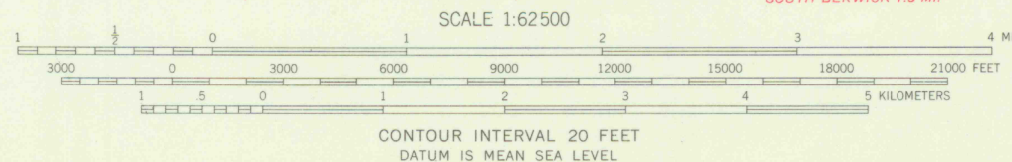


UNITED STATES  
DEPARTMENT OF THE INTERIOR  
GEOLOGICAL SURVEY

BERWICK QUADRANGLE  
MAINE-NEW HAMPSHIRE  
15 MINUTE SERIES (TOPOGRAPHIC)



Mapped, edited, and published by the Geological Survey  
Control by USGS, USC&GS, and New Hampshire Geodetic Survey  
Culture and drainage in part compiled from aerial photographs  
taken 1943. Topography by planetable surveys 1933, 1941, and  
1944. Southeast quarter compiled from 1:24,000-scale map of  
Somersworth 7.5 minute quadrangle, surveyed 1944  
Revised 1958  
Polyconic projection. 1927 North American datum  
10,000-foot grids based on Maine coordinate system, west zone,  
and New Hampshire coordinate system  
1000-meter Universal Transverse Mercator grid ticks,  
zone 19, shown in blue  
Red tint indicates areas in which only  
landmark buildings are shown



ROAD CLASSIFICATION  
Heavy-duty ——— Light-duty ———  
Medium-duty ——— Unimproved dirt ———  
U.S. Route ——— State Route ———  
The SE 1/4 is also covered by 1:24,000  
scale map of Somersworth, surveyed 1944  
BERWICK, MAINE-N. H.  
N4315-W7045/15  
1958

THIS MAP COMPLIES WITH NATIONAL MAP ACCURACY STANDARDS  
FOR SALE BY U.S. GEOLOGICAL SURVEY, WASHINGTON 25, D. C.  
A FOLDER DESCRIBING TOPOGRAPHIC MAPS AND SYMBOLS IS AVAILABLE ON REQUEST