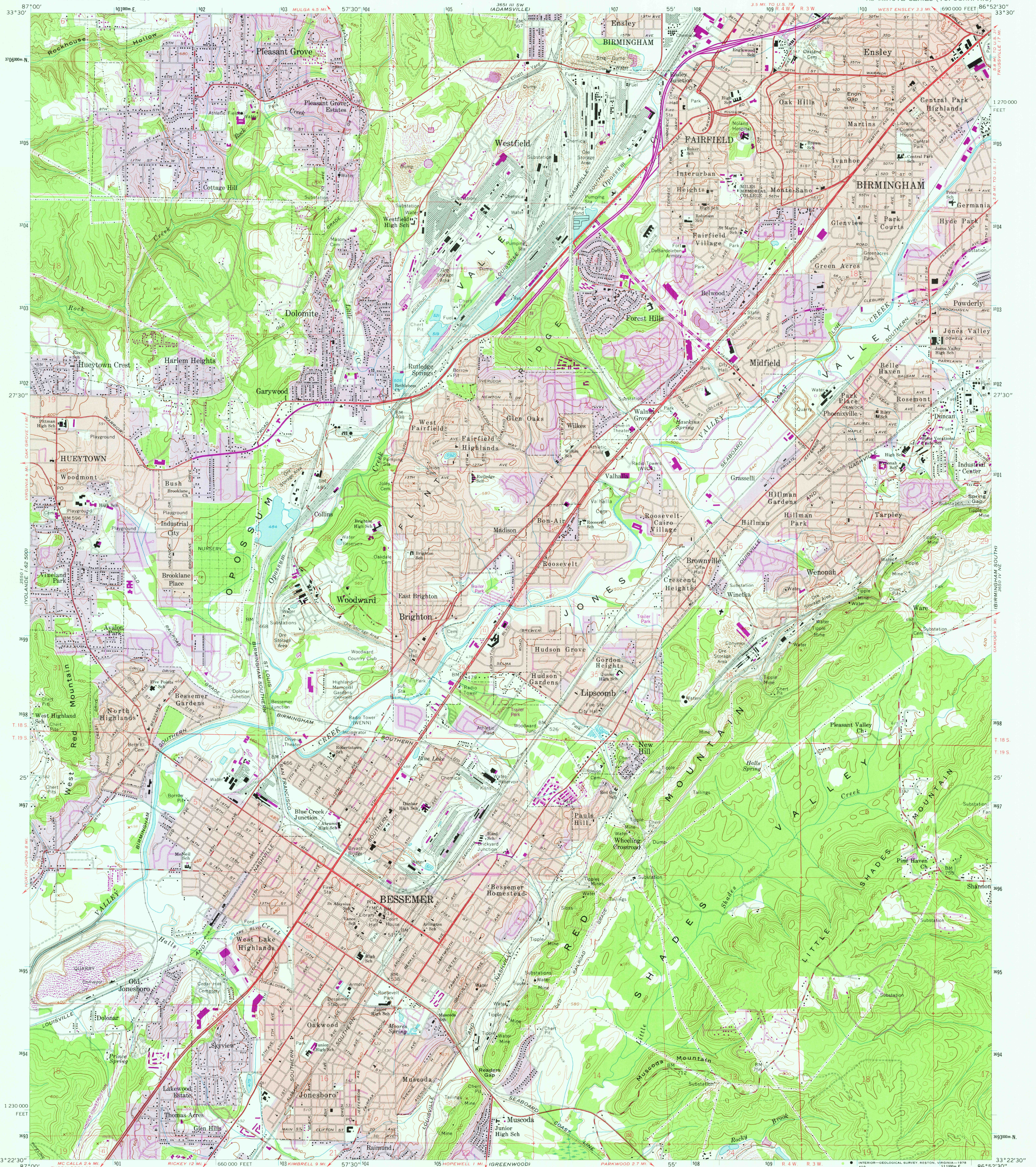


UNITED STATES
DEPARTMENT OF THE INTERIOR
GEOLOGICAL SURVEY

BESSEMER QUADRANGLE
ALABAMA-JEFFERSON CO.
7.5 MINUTE SERIES (TOPOGRAPHIC)



Mapped, edited, and published by the Geological Survey
Control by USGS, USC&GS, and USCE

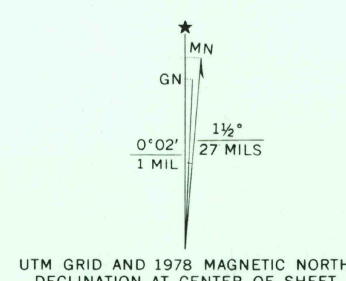
Topography from aerial photographs by photogrammetric methods
Aerial photographs taken 1957. Field check 1959

Polycyclic projection. 1927 North American datum
10,000-foot grid based on Alabama coordinate system, west zone
1000-meter Universal Transverse Mercator grid ticks,
zone 16, shown in blue

Red tint indicates areas in which only landmark buildings
are shown

Revisions shown in purple compiled from aerial photographs taken
1970 and 1975. This information not field checked. Map edited 1978

Purple tint indicates extension of urban areas



THIS MAP COMPLIES WITH NATIONAL MAP ACCURACY STANDARDS
FOR SALE BY U. S. GEOLOGICAL SURVEY, RESTON, VIRGINIA 22092
A FOLDER DESCRIBING TOPOGRAPHIC MAPS AND SYMBOLS IS AVAILABLE ON REQUEST



ROAD CLASSIFICATION
Heavy-duty ——— Light-duty ———
Medium-duty ——— Unimproved dirt ———
Interstate Route ——— U.S. Route ——— State Route ———

USGS
Historical File
Topographic Division

AUG 30 1978
BESSEMER, ALA.
N3322.5-W8652.5/7.5
1959
PHOTOREVISED 1970 AND 1978
AMS 3550 IV NW-SERIES V844