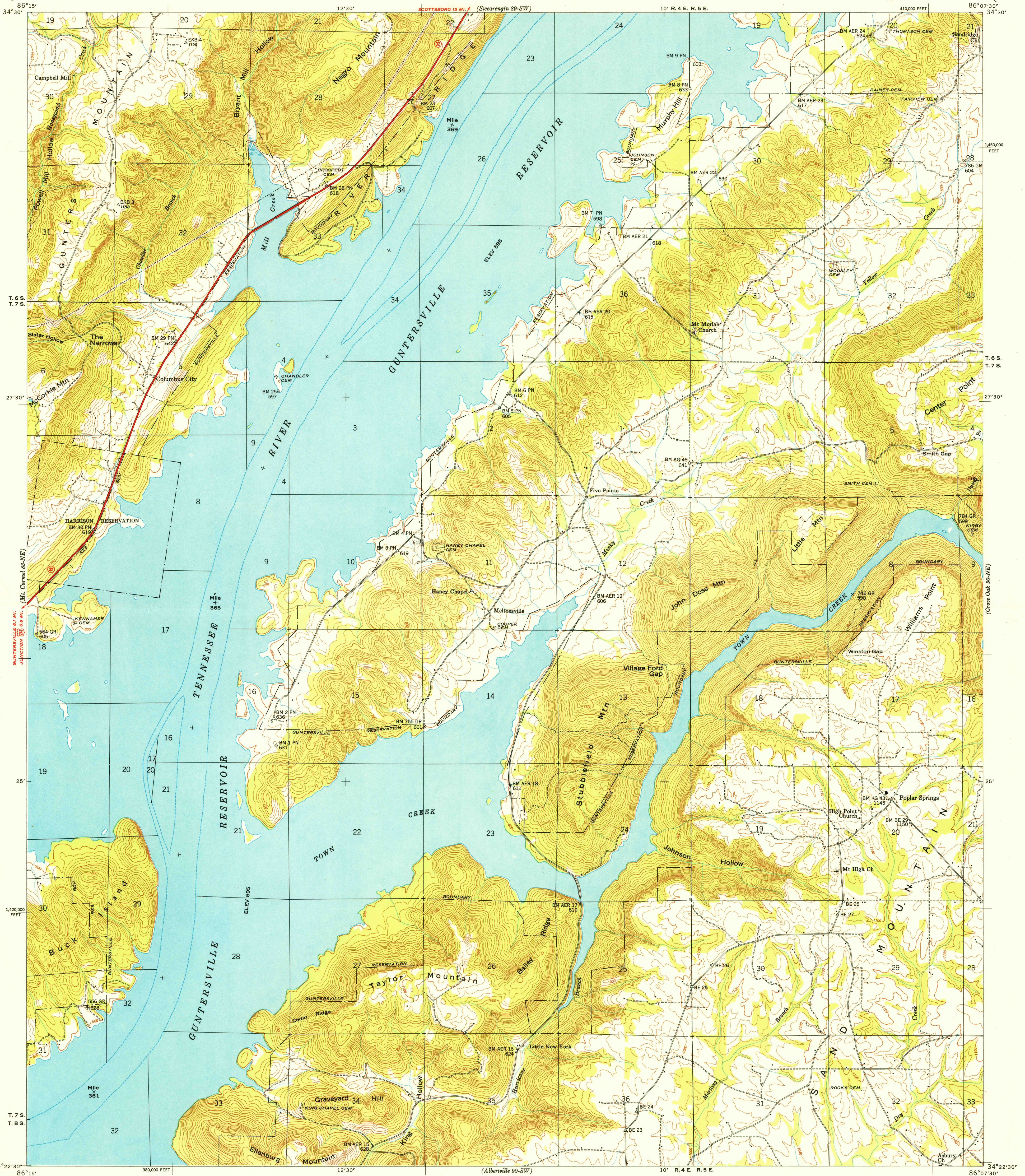


U.S.G.A.  
FILE COPY  
Inspection and Editing.

UNITED STATES  
DEPARTMENT OF THE INTERIOR  
GEOLOGICAL SURVEY

UNITED STATES  
TENNESSEE VALLEY AUTHORITY  
MAPS AND SURVEYS BRANCH

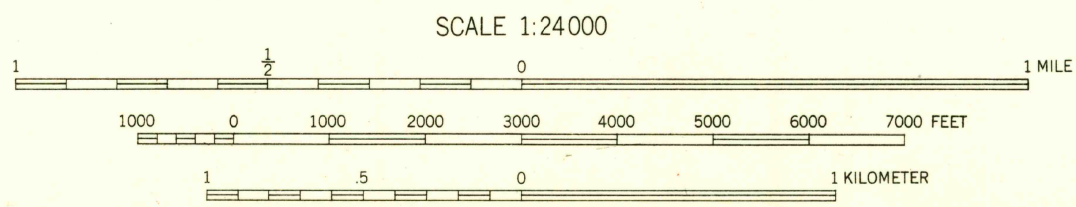
ALABAMA  
(MARSHALL COUNTY)  
COLUMBUS CITY QUADRANGLE



Basic control by USC&GS, USGS, and TVA  
Topography by USGS and TVA from aerial  
photographs by stereophotogrammetric methods  
Field examination by Tennessee Valley Authority, 1947  
Maps distributed by the Geological Survey

THIS MAP COMPLIES WITH NATIONAL MAP ACCURACY STANDARDS

TRUE NORTH  
MAGNETIC NORTH  
APPROXIMATE MEAN  
DECLINATION, 1949



Contour interval 20 feet  
Occasional 10 foot contours shown by broken lines  
Datum is mean sea level

U.S.G.A.  
FILE COPY  
Inspection and Editing.

Polyconic projection. 1927 North American datum  
10,000 foot grid based on Alabama (East)  
rectangular coordinate system

ROUTES USUALLY TRAVELED  
HARD IMPROVED SURFACES  
OTHER SURFACE IMPROVEMENTS  
U.S. ROUTE STATE ROUTE

COLUMBUS CITY, ALA.  
90-NW  
Edition of 1949  
N3422.5-W8607.5/7.5

USGS  
Historical File  
Topographic Division

HISTORICAL

JAN 24 1950

2115